



Dewberry Close, Tyldesley

Manchester



£350,000

6 Dewberry Close

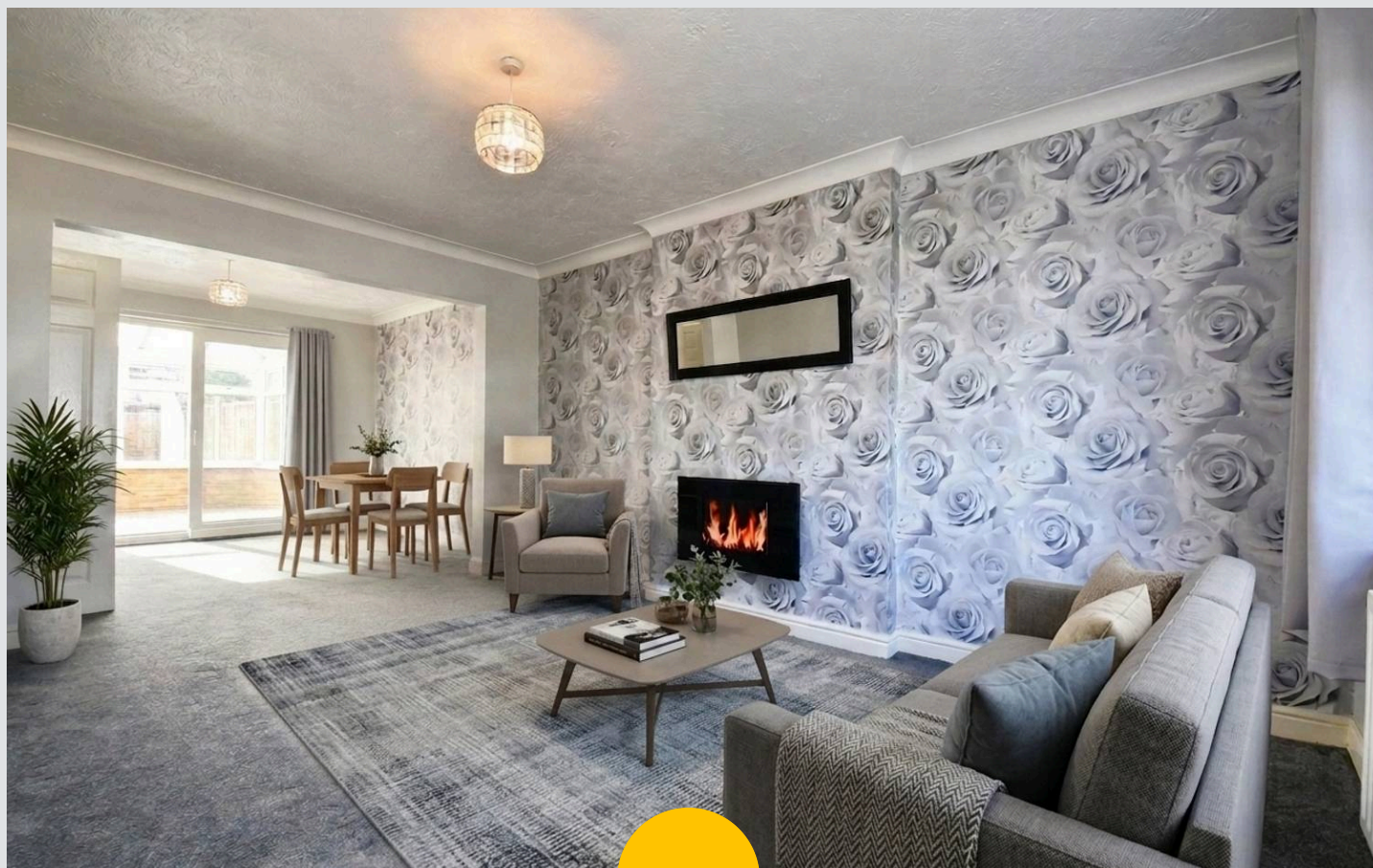
Tyldesley, Manchester

NO CHAIN - GENEROUS CORNER PLOT Fantastic FREEHOLD Detached Property Occupying a Generous Corner Plot with Gardens to the Front, Side and Rear – Boasting a South-Facing Garden and a Detached Garage!

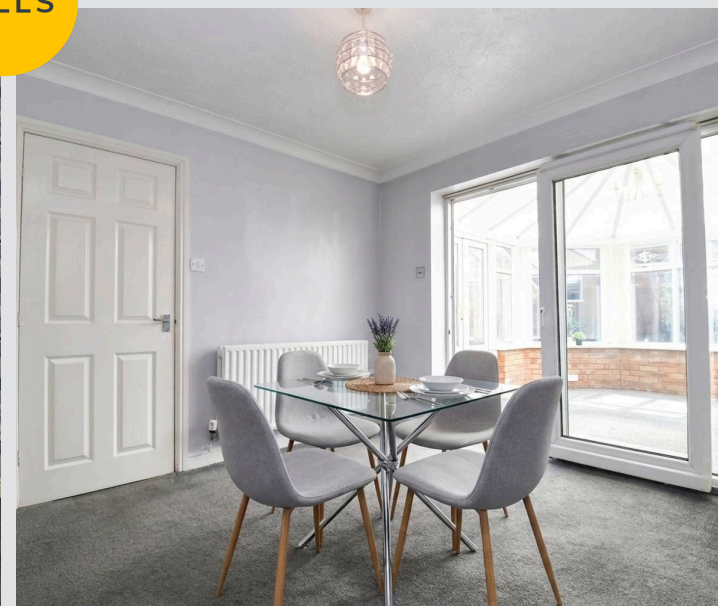
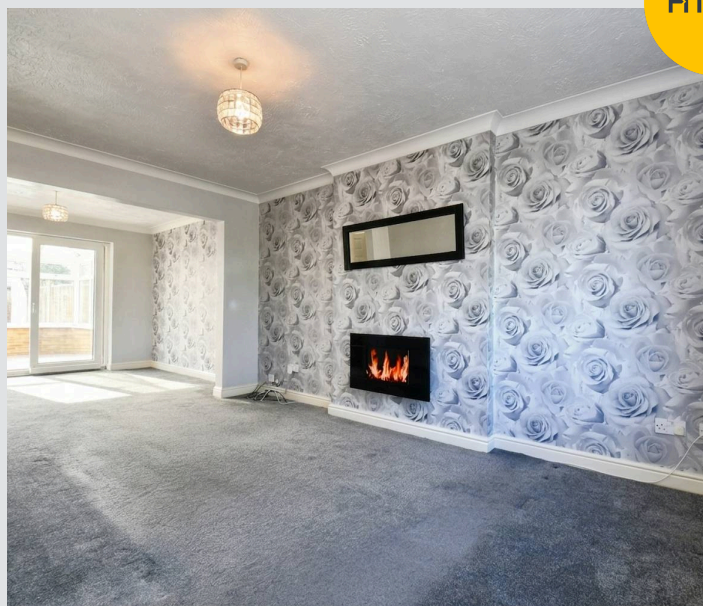
Council Tax band: D

Tenure: Freehold

- Fantastic Three Bedroom Detached Property Situated on a Generous Corner Plot
- Benefitting from a Beautifully Presented, South-Facing Garden
- Spacious Living and Dining Rooms Opened up via an Archway
- Added Bonus of a Bright Conservatory to the Rear
- Large, Modern Fitted Kitchen with Plenty of Storage
- Modern, Three-Piece Bathroom and a Downstairs W/C
- Three Generously-Sized Bedrooms, with a Large Ensuite to the Main Bedroom
- Gardens to the Front, Side and Rear, with a Driveway and a Detached Garage to the Side for Off-Road Parking
- Within Easy Access of the Guided Busway and the A580, Providing Direct Access into Manchester City Centre
- Close to Plenty of Amenities, with a Supermarket, Nursery and a Gym Nearby. Great Family Location – Get in Touch to Secure Your Viewing



HILLS



Entrance Hallway

Downstairs W/C

5' 7" x 3' 0" (1.70m x 0.92m)

Lounge

14' 11" x 10' 4" (4.54m x 3.16m)

Dining Room

10' 4" x 9' 9" (3.16m x 2.98m)

Kitchen

16' 6" x 9' 10" (5.02m x 3.00m)

Conservatory

11' 4" x 10' 4" (3.46m x 3.15m)

Landing

Bedroom One

14' 3" x 10' 5" (4.34m x 3.17m)

Ensuite

9' 10" x 5' 6" (3.00m x 1.67m)

Bedroom Two

10' 8" x 10' 8" (3.26m x 3.24m)

Bedroom Three

10' 0" x 9' 9" (3.04m x 2.98m)

Bathroom

6' 7" x 6' 5" (2.01m x 1.95m)



HILLS



Entrance Hallway

Downstairs W/C

5' 7" x 3' 0" (1.70m x 0.92m)

Lounge

14' 11" x 10' 4" (4.54m x 3.16m)

Dining Room

10' 4" x 9' 9" (3.16m x 2.98m)

Kitchen

16' 6" x 9' 10" (5.02m x 3.00m)

Conservatory

11' 4" x 10' 4" (3.46m x 3.15m)

Landing

Bedroom One

14' 3" x 10' 5" (4.34m x 3.17m)

Ensuite

9' 10" x 5' 6" (3.00m x 1.67m)

Bedroom Two

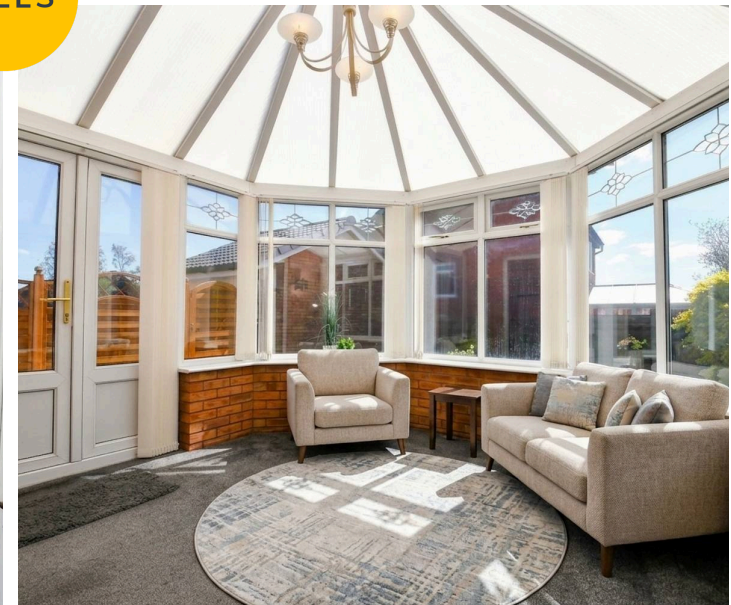
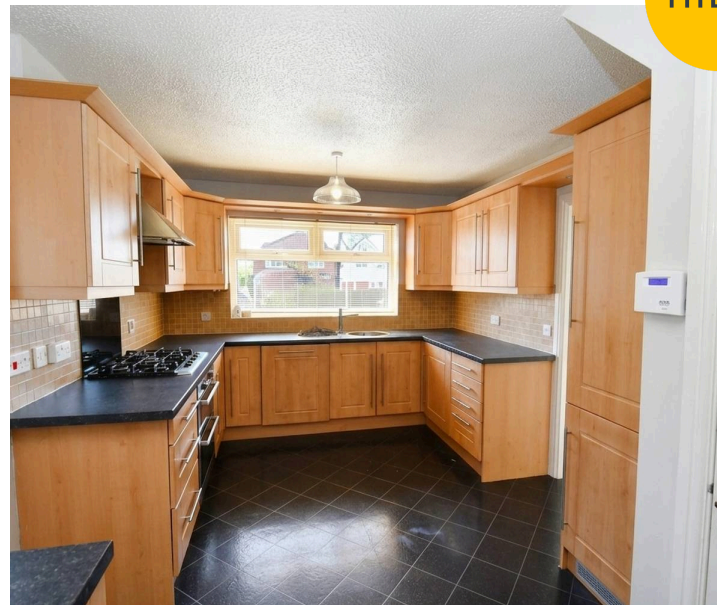
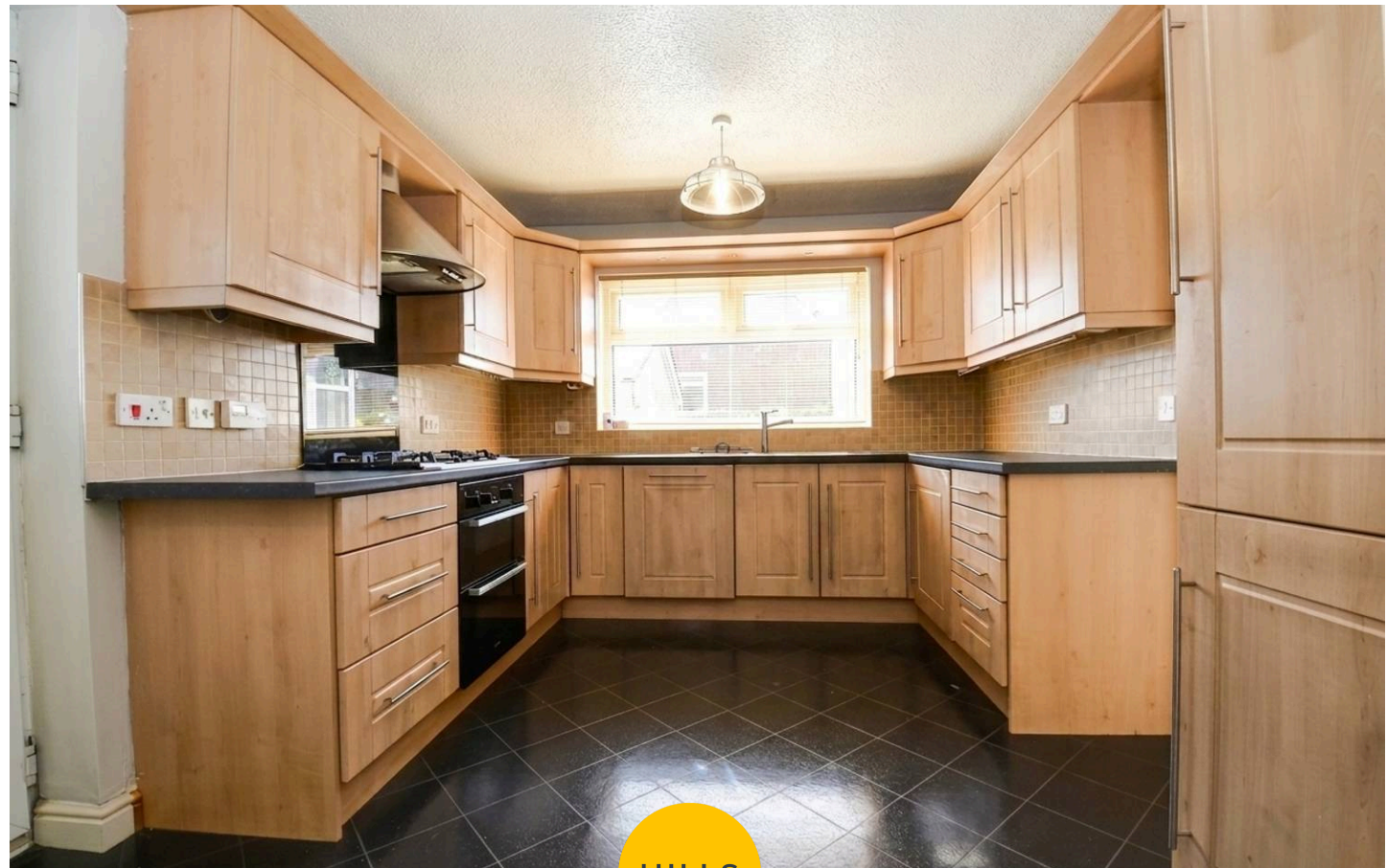
10' 8" x 10' 8" (3.26m x 3.24m)

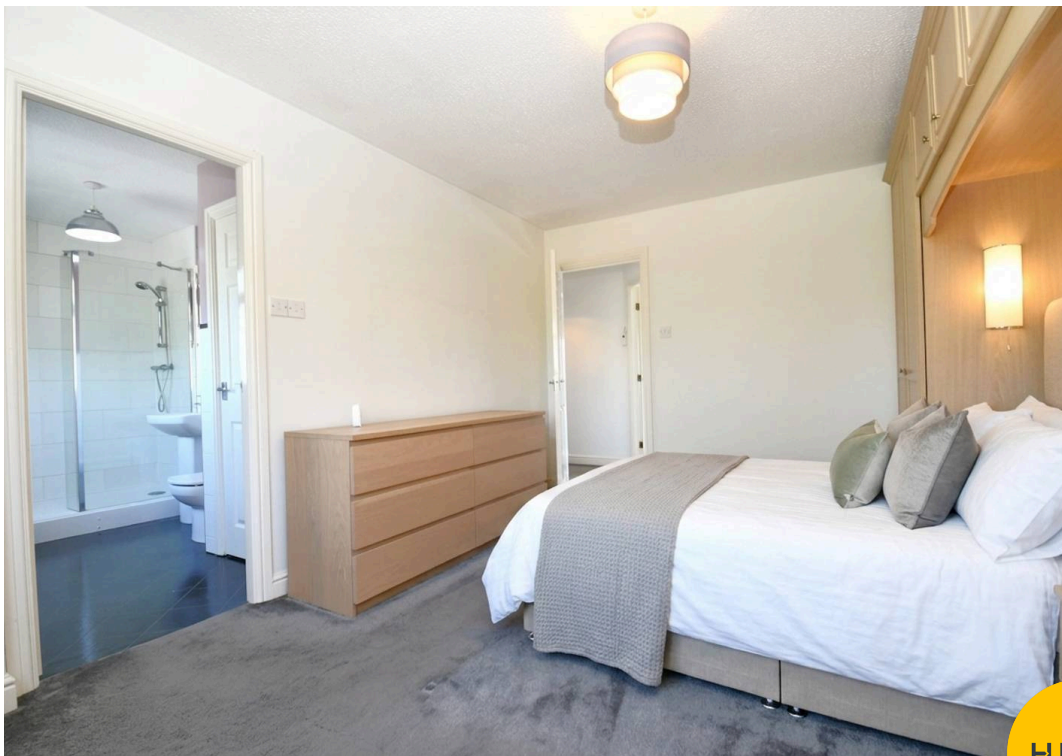
Bedroom Three

10' 0" x 9' 9" (3.04m x 2.98m)

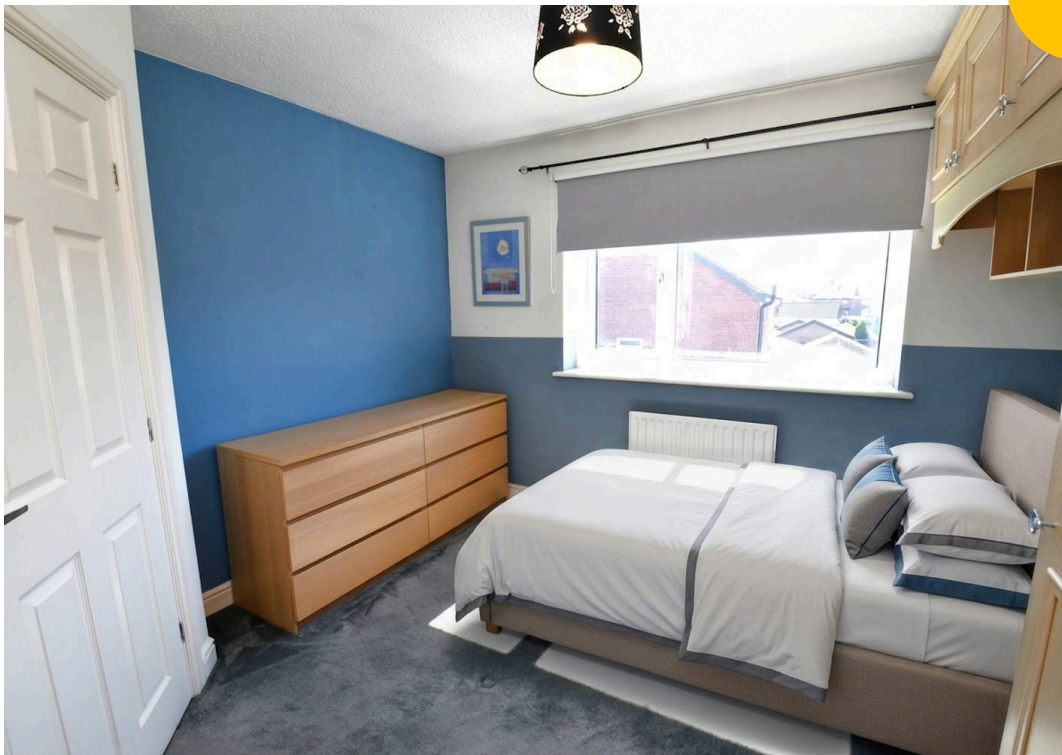
Bathroom

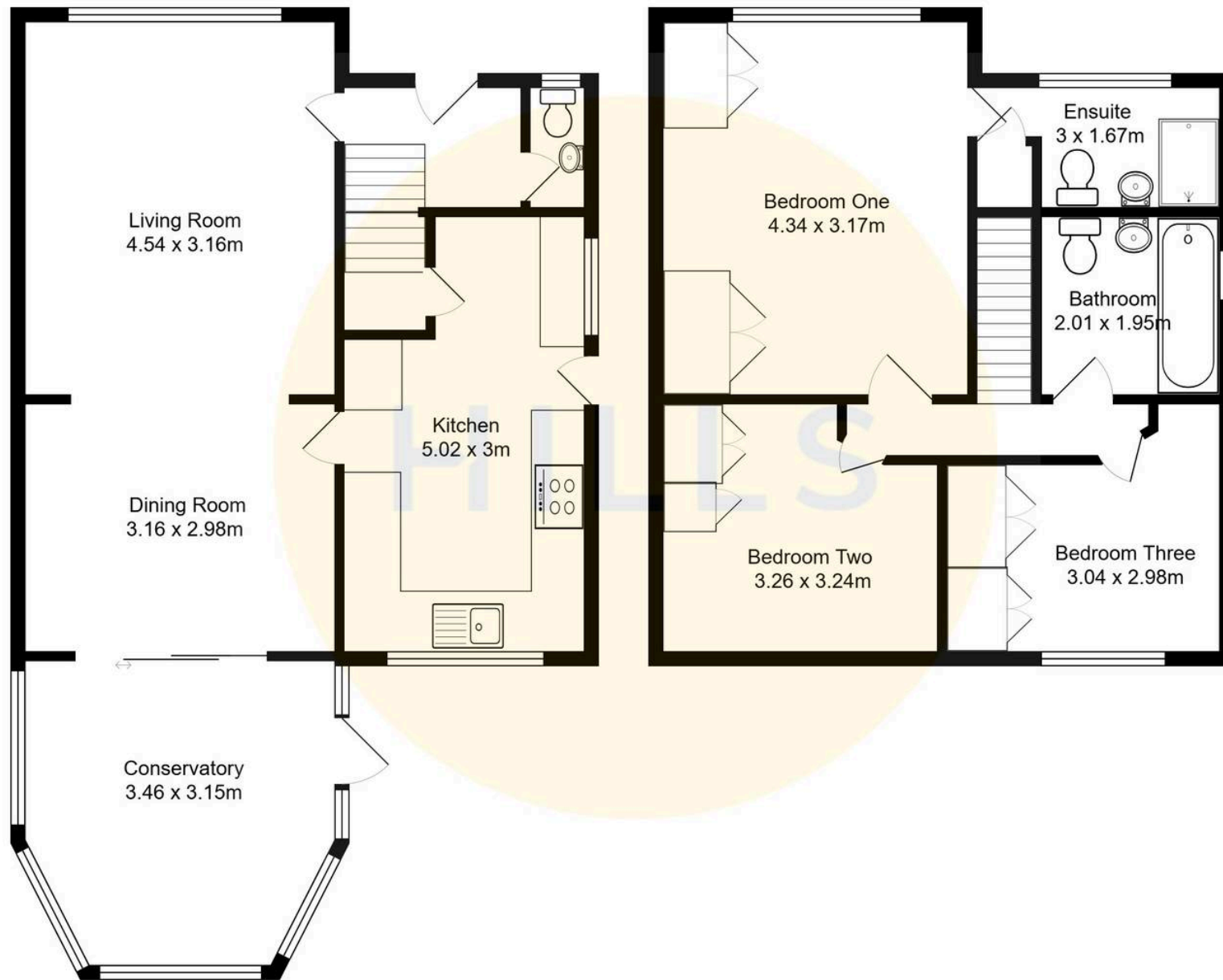
6' 7" x 6' 5" (2.01m x 1.95m)





HILLS







Hills | Salfords Estate Agent

Hills Residential, Sentinel House Albert Street - M30 0SS

0161 707 4900

sales@hills.agency

www.hills.agency/



By law, we are required to conduct anti-money laundering checks on all potential buyers and sellers. In line with HMRC guidelines, our trusted partner, Coadjute, will securely manage these checks on our behalf. A non-refundable fee of £45 + VAT per person will apply, and Coadjute will handle the payment. Once an offer is accepted, Coadjute will send a secure link for you to complete the biometric checks. These checks must be completed before we can send the memorandum of sale to all parties. PLEASE NOTE: The Agent has not tested any equipment, fixtures, fittings or services so cannot verify that they are in working order or fit for the purpose. References to the properties tenure are based on information supplied by the seller. You are advised to check the availability of this property before travelling any distance to view. Every effort has been made to ensure these particulars are correct and not misleading but their accuracy is not guaranteed nor do they form part of any contract.