

6 Bonningtons Yard Station Road

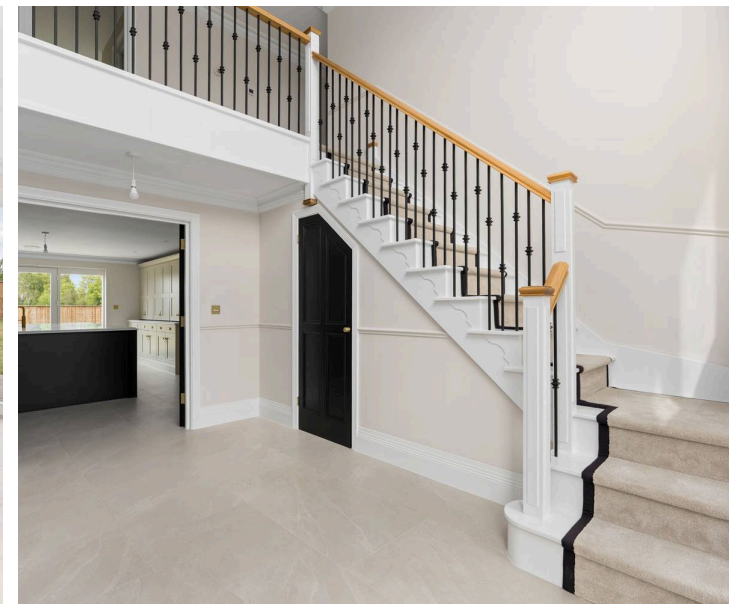
Takeley, Bishop's Stortford

Five ensuite bedrooms with picturesque countryside views, spacious private garden, plus an open plan kitchen and double garage. All set within a peaceful gated new build development - welcome to Bonningtons Yard, Takeley.

Council Tax band: TBD

Tenure: Freehold

- Five ensuite bedrooms
- Exclusive new build home
- Beautiful interiors
- Essex countryside views
- Private gated development
- Short drive to the M11
- Double garage



Hallway

12' 2" x 13' 8" (3.70m x 4.16m)

Kitchen / Diner

31' 6" x 25' 0" (9.59m x 7.61m)

Utility Room

15' 3" x 6' 4" (4.66m x 1.94m)

WC

Sitting Room

15' 4" x 20' 1" (4.68m x 6.11m)

Bedroom

29' 11" x 17' 2" (9.11m x 5.22m)

Ensuite Shower Room

Bedroom

15' 3" x 17' 3" (4.66m x 5.27m)

Ensuite Shower Room

Bedroom

15' 3" x 13' 6" (4.66m x 4.11m)

Ensuite Shower Room

Bedroom

15' 3" x 9' 1" (4.66m x 2.78m)

Ensuite Bathroom

Bedroom

15' 3" x 8' 11" (4.66m x 2.71m)

Ensuite Shower Room

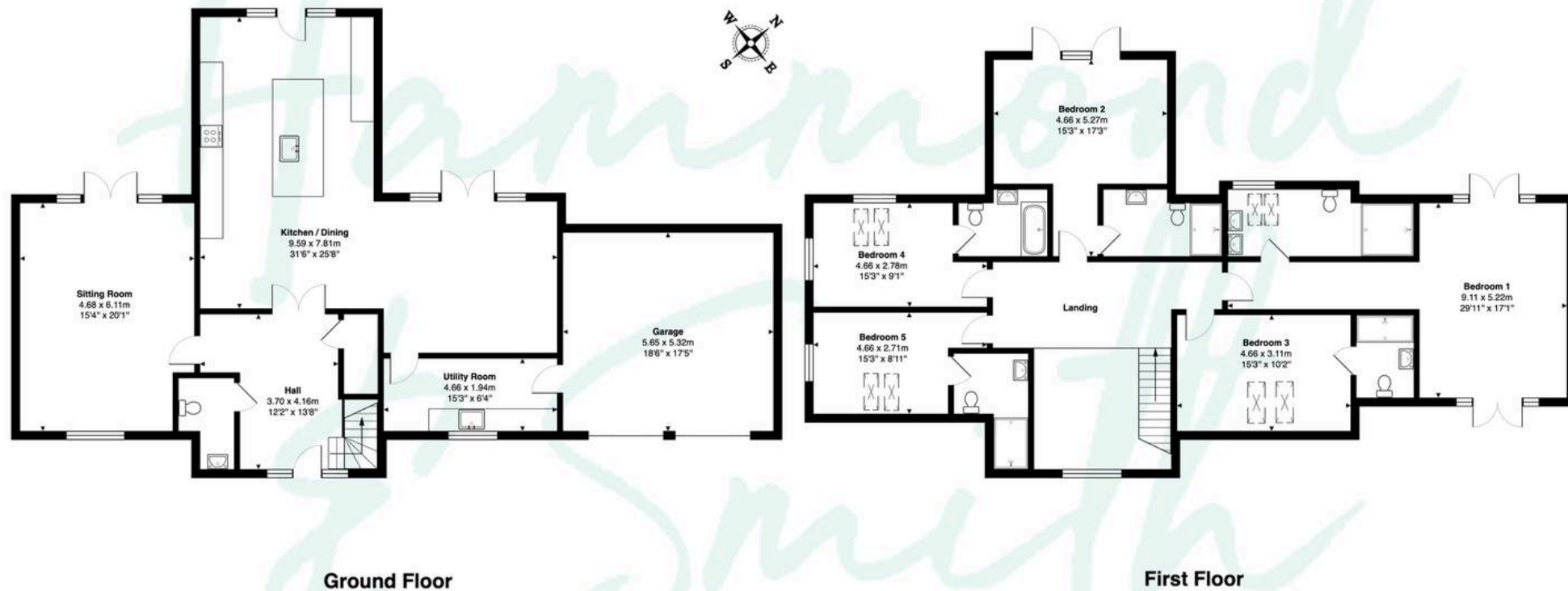
Double garage

18' 6" x 17' 5" (5.65m x 5.32m)





6 Bonningtons Yard, Takeley, Bishop's Stortford, CM22 6SQ



Total Area: 287.8 m² ... 3097 ft²

This floor plan is for illustrative purposes only and is not to scale.
Measurements are approximate and intended as a guide. All details should be verified independently.