



Benbow House | | 24 New Globe Walk | SE1 9DS

£950,000

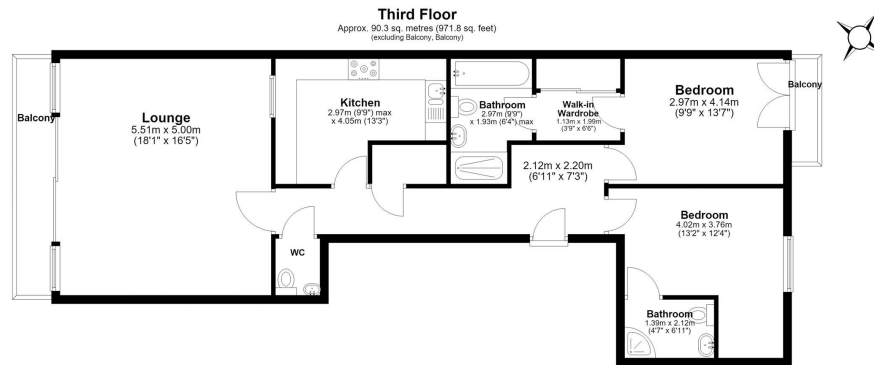
**ICON**  
RESIDENTIAL

Benbow House |  
 24 New Globe Walk | SE1 9DS  
 £950,000

A rare opportunity to acquire a beautiful two-bedroom, three-bathroom, west facing, third floor apartment in this most exclusive of apartment blocks.



- 24 HOUR CONCIERGE
- SHARE OF FREEHOLD
- TWO EN-SUITE BEDROOMS
- PRIVATE GARDENS
- WONDERFUL VIEWS
- PRIVATE GARAGE EV PARKING SPACE
- GUEST CLOAKROOM



Total area: approx. 90.3 sq. metres (971.8 sq. feet)

This floor plan has been created by a third party and should be used as a general outline for guidance only. Any areas, measurements or distances quoted are approximate and any intending purchaser or lessee should satisfy themselves by inspection, searches, enquiries and/or full survey as to the correctness of each statement. We accept no responsibility or liability for any loss whatsoever that may arise as a result of this plan and the information contained within.  
 © @modestphoto.uk | www.modestphoto.co.uk  
 Plan produced using PlanItUp

New Globe Walk

Energy Efficiency Rating		Current	Potential
Very energy efficient - lower running costs			
(92 plus) A			
(81-91) B			
(69-80) C		77	79
(55-68) D			
(39-54) E			
(21-38) F			
(1-20) G			
Not energy efficient - higher running costs			
England & Wales		EU Directive 2002/91/EC	

52 Grosvenor Gardens  
 London  
 SW1W 0AU  
 020 7956 2080

steven.hartman@icon-residential.co.uk  
<http://www.icon-residential.co.uk/>