



Guide Price
£300,000

Freehold

2x  1x  1x 

**Larkfield Close,
Larkfield, Aylesford,
Kent, ME20**

OVER 60?

Secure this property
for up to **59% less!**

Wards
Helping you move forwards



Main features

- Well presented with neutral decor
- Large lounge & separate kitchen/diner - great for entertaining
- Good size bedrooms - no box room to worry about
- Useful rear porch - handy for storage
- Short walk to shops, schools & bus routes

Accommodation

GROUND FLOOR

Entrance Hall
 Lounge: 13'6 x 10'2 (4.12m x 3.10m)
 Kitchen/Diner: 16'6 x 8'1 (5.03m x 2.47m)
 Rear Porch

FIRST FLOOR

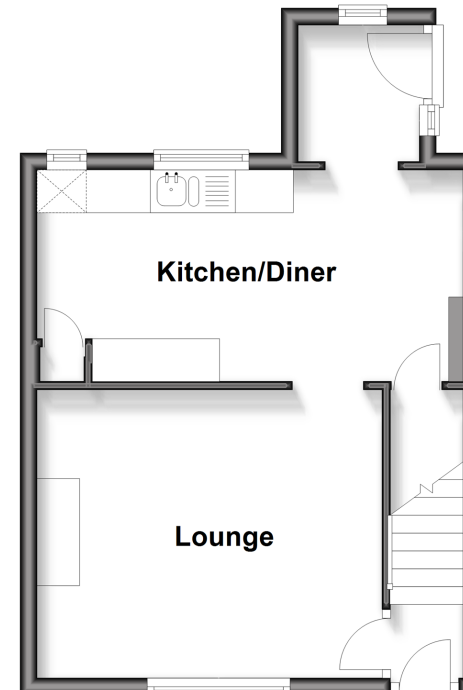
Landing
 Bedroom 1: 12'11 x 9'10 (3.94m x 3.00m)
 Bedroom 2: 8'2 x 8'0 (2.49m x 2.44m)
 Bathroom

OUTSIDE

Driveway
 Front & Rear Gardens

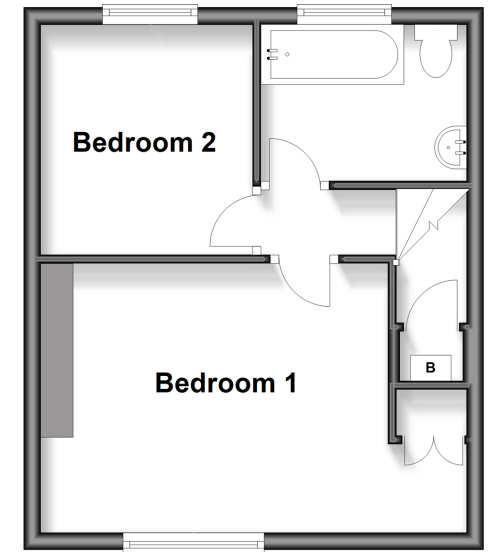
Ground Floor

Approx. 32.1 sq. metres (345.6 sq. feet)



First Floor

Approx. 30.1 sq. metres (323.5 sq. feet)



Call Larkfield - 01732 847877 ■ wardsokent.co.uk

■ Through a Homewise Home For Life Plan people aged 60+ can secure this property for up to 59% less, by purchasing a Lifetime Lease



12935776/20260320/HS1/HS1