



# Reigate Hill, Reigate

Guide Price £325,000 - £345,000





“

We were immediately impressed with the apartment at Wellingtonia Place and choose this above other properties as it was a higher standard of finish and had a relaxing and solid feel to it. The location has been ideal, close to the station yet tucked away from the road to allow peace and quiet. The sizeable communal garden has also been a big plus.

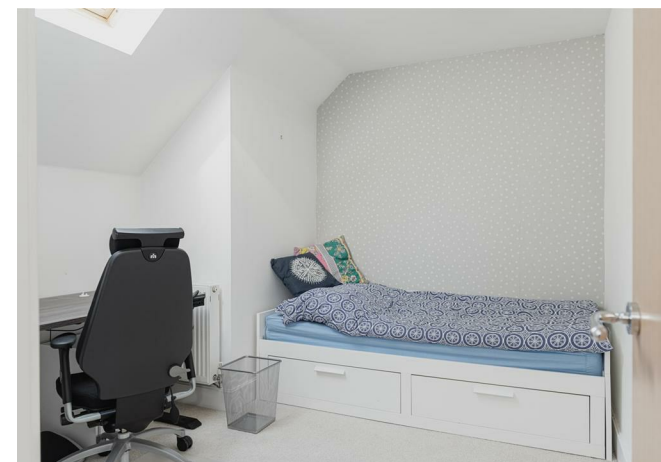
”



Located on the North side of Reigate within a 5 minute walk from the station, this modern top floor apartment is tucked away from the road in the building at the back of the development. Built in 2006, this property has a contemporary style and finish throughout.

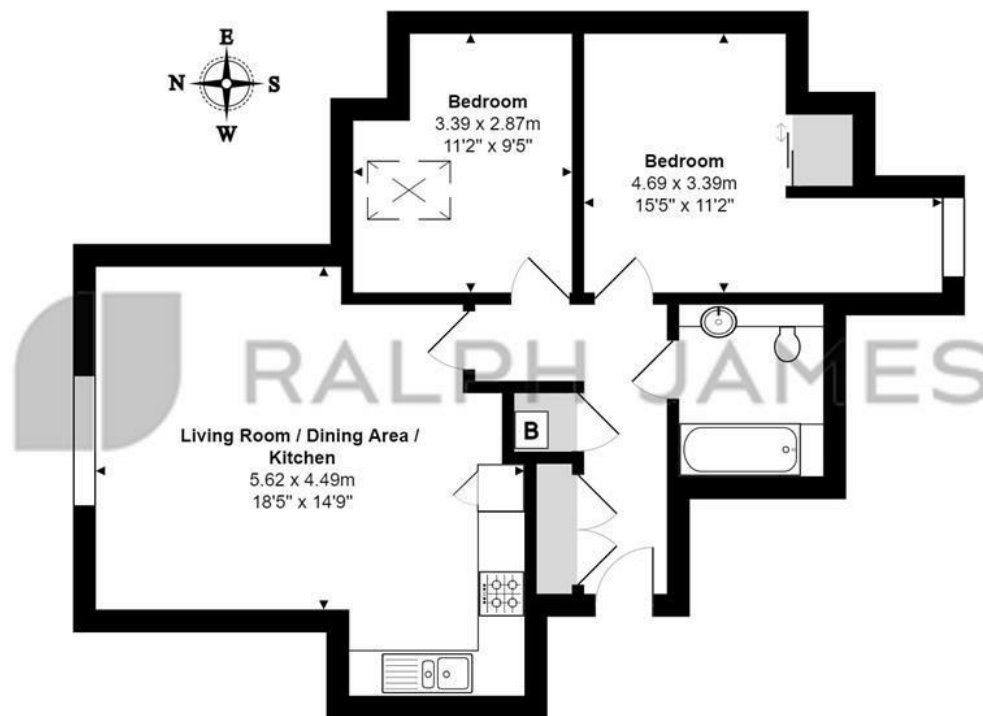
The open plan living space is large enough for a table and chairs as well as a comfy sofa to curl up on in the evenings. The arched window is a lovely feature of the room and looks out over the trees and beyond. There is ample storage with a large double cupboard in the hallway and fitted wardrobes to the master bedroom as well as access to the loft space.

The location is so convenient; the station is nearby along with several takeaways, you can walk to Reigate town centre in 10 minutes with a wide variety of shops, cafes and restaurants, the local Co-Op is 2 minutes away and there is direct access from Reigate Hill to J8 of the M25.



## Need to know

- Stylish top floor apartment with two good size double bedrooms
- Located within a 5 minute walk to Reigate train station
- Spacious open plan living space, great for entertaining
- Allocated parking space
- Good size communal garden
- No forward chain
- Neutrally decorated throughout, ready to move straight in
- Walking distance to local shops as well as Reigate town centre
- Easy access to the M25 and Gatwick



### Second Floor Flat

Wellingtonia Place, Reigate

Total Area: 61.3 m<sup>2</sup> ... 660 ft<sup>2</sup>

FOR ILLUSTRATIVE PURPOSES ONLY.

Whilst every attempt has been made to ensure the accuracy of the floor plan shown, all measurements, positioning, fixtures, features, fittings and any other data shown are an approximate interpretation for illustrative purposes only and are not to scale.

No responsibility is taken for any error, omission, miss-statement or use of data shown.

The above statement applies to both 'Still Moving London LTD' and the Company or individual displaying this floor plan.

Unauthorised reproduction prohibited.

© Still Moving London LTD (www.stillmoving.london)



## Interested?

reigate@ralphjames.co.uk  
01737 333677

www.ralphjames.co.uk  
@ralphjamesestateagents