



## Galley Hill, Hemel Hempstead, HP1 3LR

### Offers In Excess Of £180,000

Located in Gadebridge is this well presented purpose built first floor flat. Boasting one bedroom, 14'3 lounge with balcony, 13'11 fitted kitchen with integrated appliances, gas central heating, double glazing and outside storage cupboard.

Situated within easy reach of the historic Old Town High Street with its local shops, restaurants and coffee shops, Gadebridge Park, Hemel Hempstead town centre and within easy reach of Hemel Hempstead mainline station which is only 30 minutes into London Euston and the M1, M25 and A41 road links.

## Communal Hallway

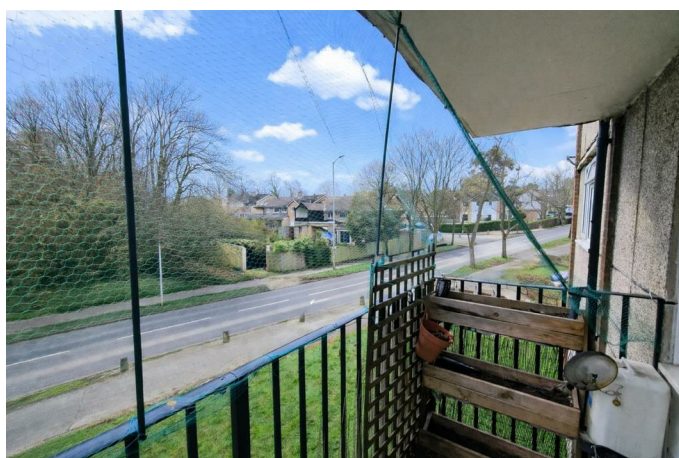
Lounge 14'3 x 13'11 (4.34m x 4.24m)



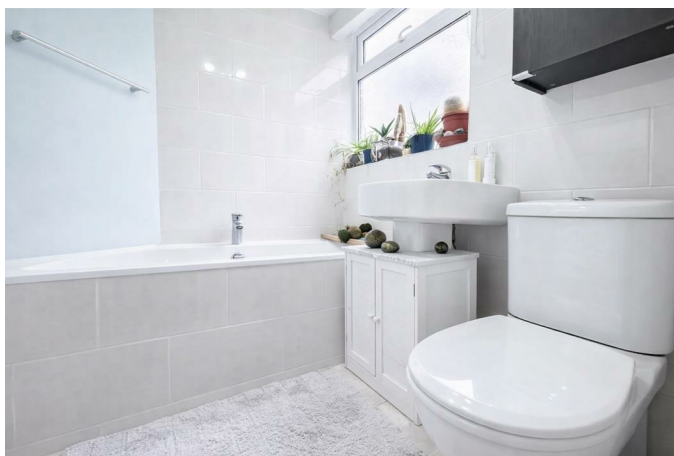
Bedroom 14'1 max x 9'8 (4.29m max x 2.95m)



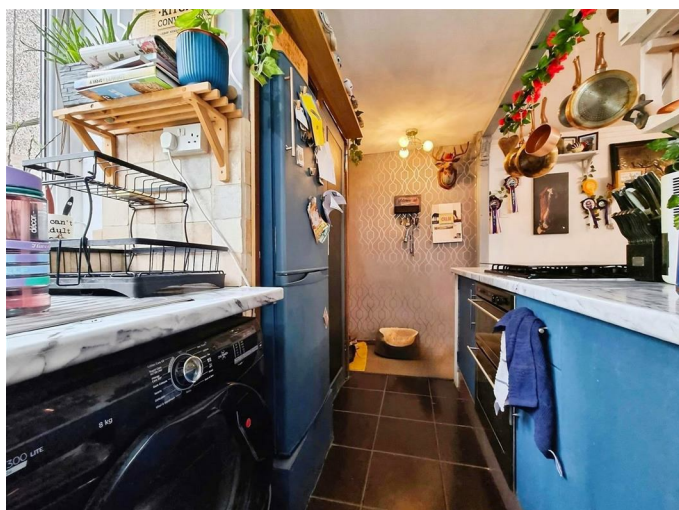
## Balcony



## Bathroom



Fitted Kitchen 13'11 x 6'2 (4.24m x 1.88m )



## Outside Storage Cupboard

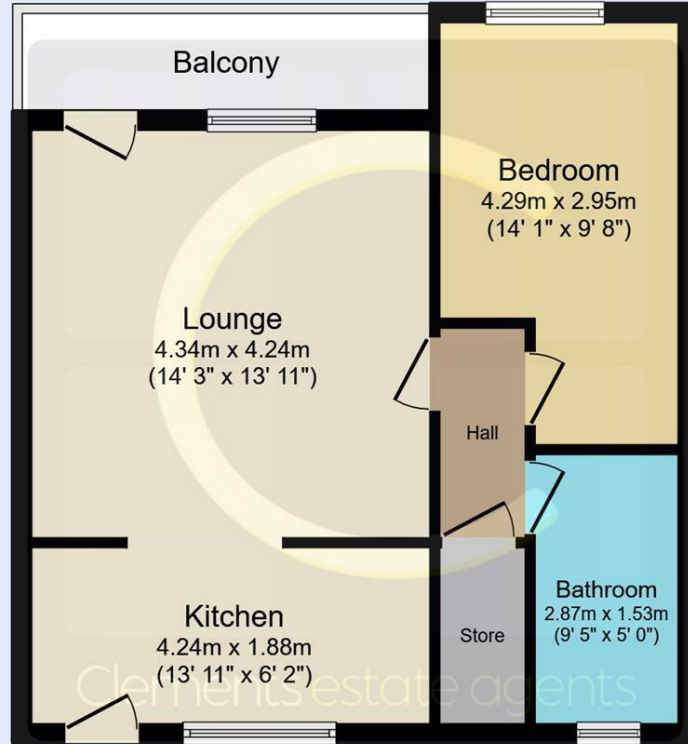
## Communal Area



## Hallway

Walk in Cupboard

# Floor Plan

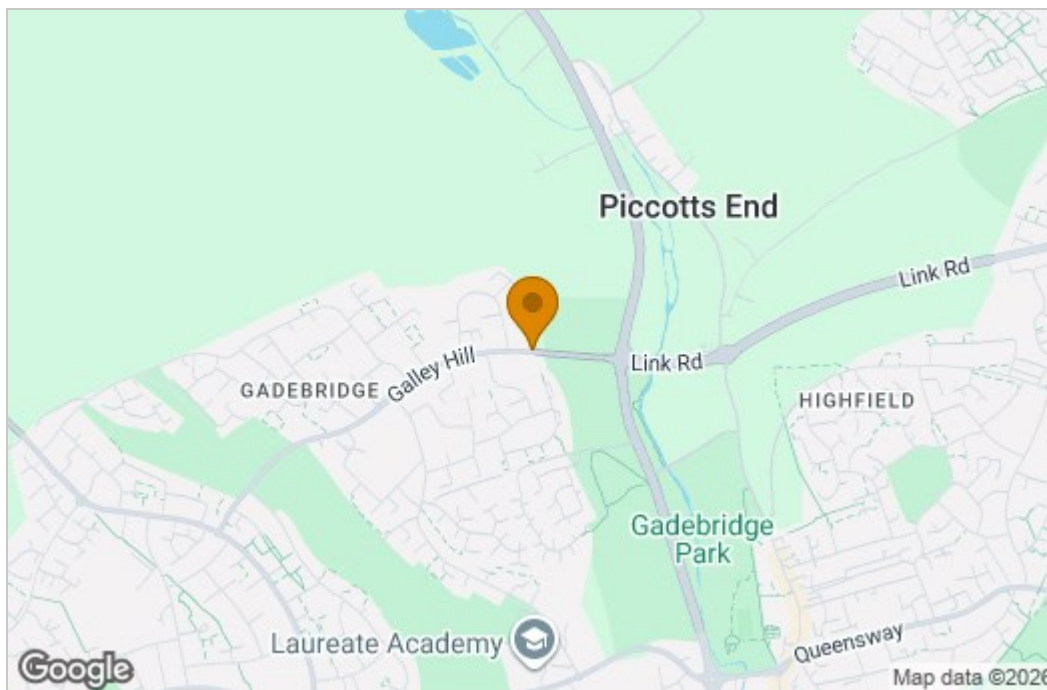


Floor Plan

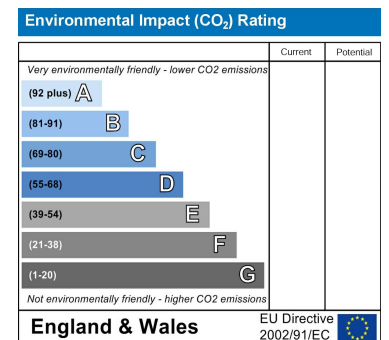
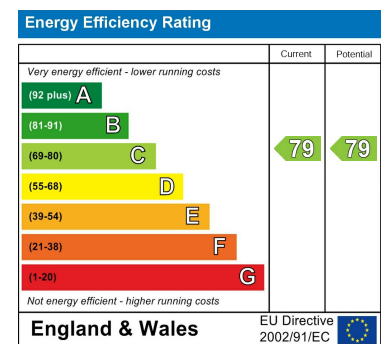
This floor plan is for illustrative purposes only. It is not drawn to scale. Any measurements, floor areas (including any total floor area), openings and orientations are approximate. No details are guaranteed, they cannot be relied upon for any purpose and do not form any part of any agreement. No liability is taken for any error, omission or misstatement. A party must rely upon its own inspection(s). Powered by www.Propertybox.io



# Area Map



# Energy Efficiency Graph



These particulars, whilst believed to be accurate are set out as a general outline only for guidance and do not constitute any part of an offer or contract. Intending purchasers should not rely on them as statements of representation of fact, but must satisfy themselves by inspection or otherwise as to their accuracy. No person in this firm's employment has the authority to make or give any representation or warranty in respect of the property.