

## The Coppice, Thorpe Willoughby, Selby, YO8 9PX

Guide Price £240,000

3 1 2

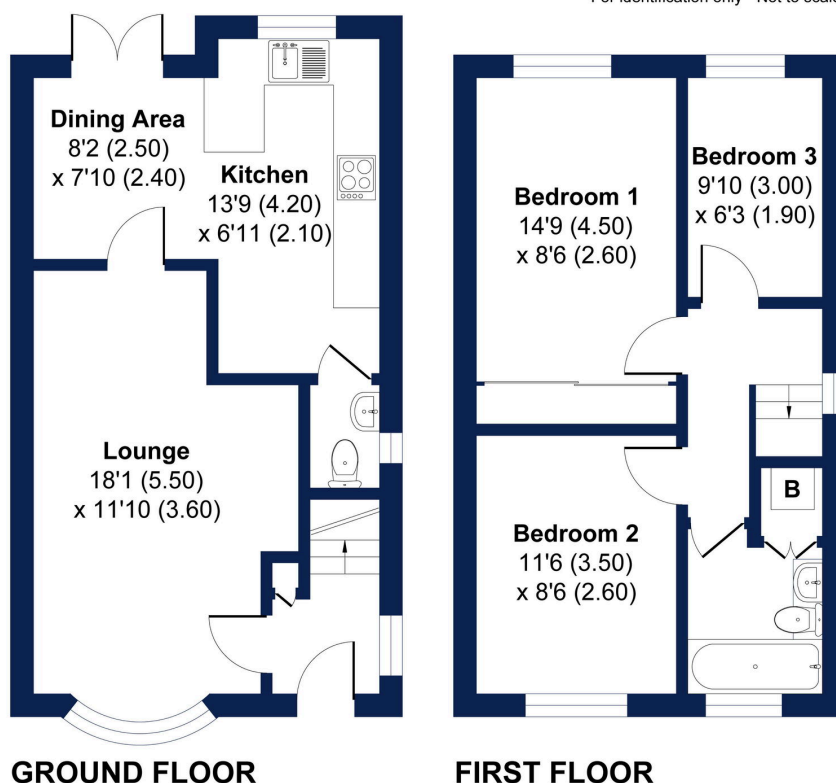


\*\*\* LOVELY THREE BEDROOM DETACHED HOUSE \*\*\* MODERN DINING KITCHEN \*\*\* UPDATED FAMILY BATHROOM \*\*\* SPACIOUS LOUNGE \*\*\* FRONT & REAR GARDENS \*\*\* DRIVEWAY \*\*\* SINGLE DETACHED GARAGE \*\*\* CUL DE SAC POSITION \*\*\* SOUGHT AFTER VILLAGE LOCATION \*\*\* NO ONWARD CHAIN \*\*\*

## Key Features

- Lovely Detached House
- Single Detached Garage
- Front & Rear Gardens
- Sought After Location
- EPC Rating - TBC
- Spacious Lounge
- Three Bedrooms
- Cul De Sac Position
- Ideal Family Home
- No Onward Chain

Approximate Area = 792 sq ft 73.6 sq m  
For identification only - Not to scale



**GROUND FLOOR**

**FIRST FLOOR**

Produced By The Plan Portal for Richard Bassford Powered by eXp.  
**For Illustrative Purposes Only.**