



## Bryanston Mews West, W1H

£1,650 Per week

A two bedroom, two bathroom mews house with a large terrace, vaulted ceilings and a garage. The house has superb natural light throughout and is located on a quiet mews.

Bryanston Mews West is moments from the fashionable shops and bars of Marylebone High Street and London's West End.

### Features

- Two Bedrooms
- Two Bathrooms
- Private Outside Space
- Large Garage
- Owned and Managed by The Portman Estate
- Complimentary Membership to Portman Concierge





## Bryanston Mews West, W1H

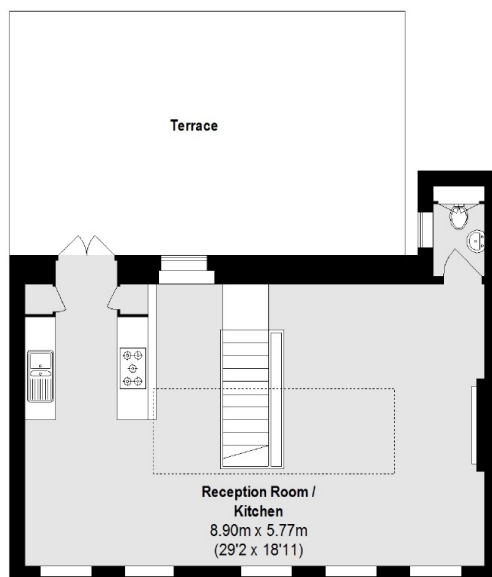
The open-plan kitchen/reception room occupies the entire first floor and has high ceilings, wood beaming and doors leading out to a private terrace.

Both bedrooms are good sized double rooms with built-in wardrobes and access to a second courtyard garden. There is a modern bathroom, shower room and a further guest WC.

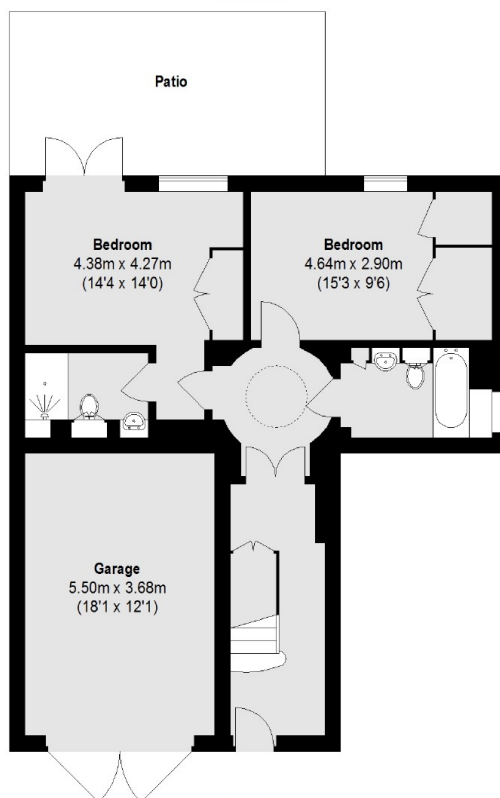




# Bryanston Mews West, London, W1H



First Floor



Ground Floor

Total area (approx.): 106.56 sq. m (1147 Sq. ft)  
Garage: 20.93 sq. m (225 Sq. ft)  
Terrace: 36.58 sq. m (394 Sq. ft)