



## Pavilion Terrace, W12

### £825,000

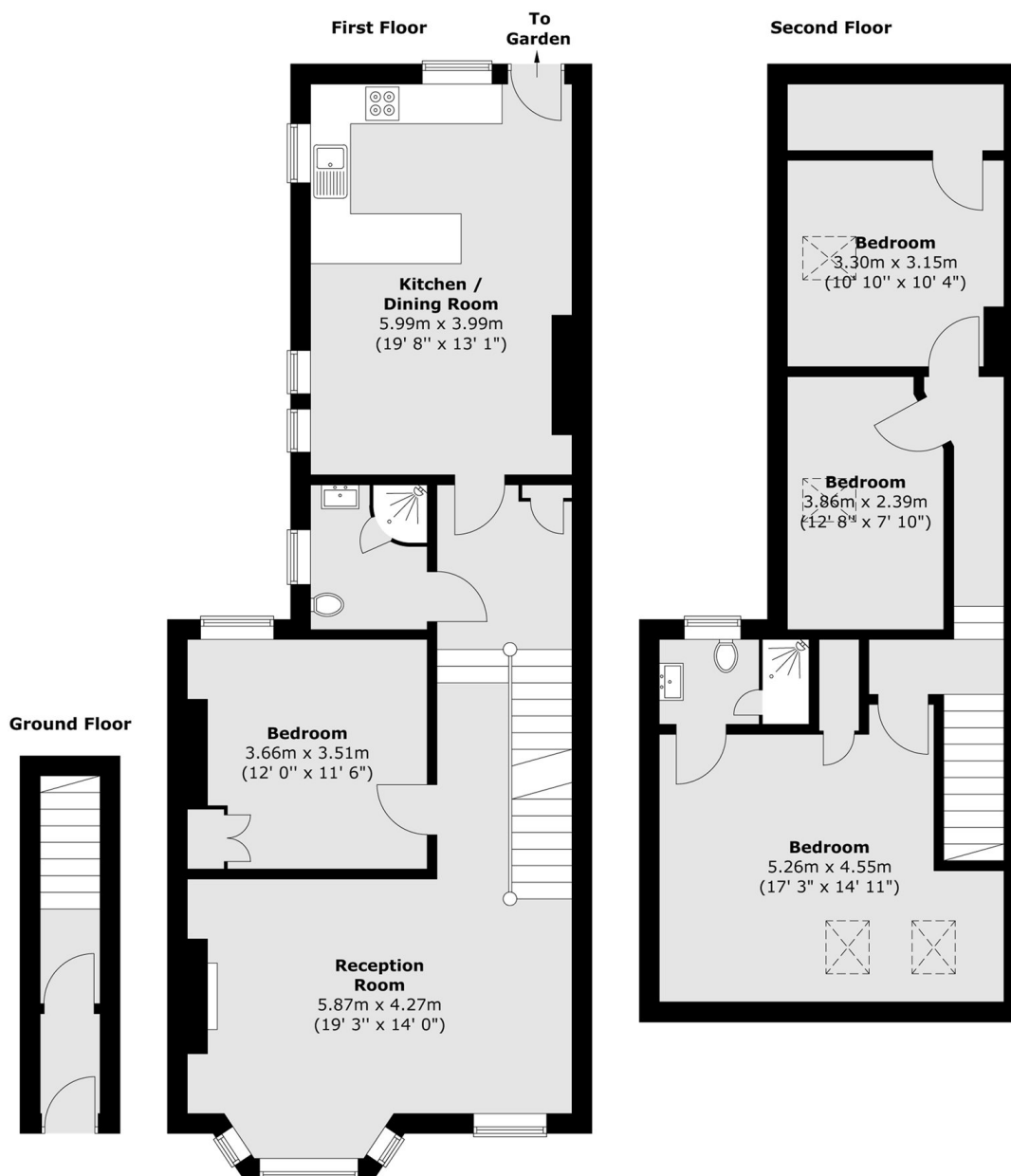
A spacious split-level four-bedroom maisonette extending to approximately 1,500 sq ft and offered to the market with no onward chain. The property comprises four well-proportioned double bedrooms, providing generous and flexible living accommodation. A beautiful kitchen and an inviting living area, both enhanced by wood-burning stoves, form a warm and characterful heart to the home. Further benefits include a private garden, making this an ideal choice for families or buyers seeking space and charm.

Pavilion Terrace is located in close proximity to Notting Hill. It is moments away from the historic Television Centre, White City House and the abundance of shops and amenities in Westfield Shopping Centre as well as the bars and restaurants on Portobello Road. There are fantastic transport links with easy access into central London, the West End and The City.

### Features

- Share of Freehold
- Private Garden
- Two Wood Burners
- No Onward Chain
- Residents Parking
- Westfields Shopping Centre

# Pavilion Terrace, London, W12



Total area (approx.) : 139.8 sq. m (1505 sq. ft)

## Dexters

Shepherds Bush and Brook Green  
53 Shepherds Bush Green  
London  
W12 8PS  
Sales  
020 8740 2900

Energy Rating: D. We aim to make our particulars both accurate and reliable. However they are not guaranteed; nor do they form part of an offer or contract. If you require clarification on any points then please contact us, especially if you're traveling some distance to view. Please note that appliances and heating systems have not been tested and therefore no warranties can be given as to their good working order.

**RICS** Regulated  
Estate Agent  
and Letting Agent

dexters.co.uk