

The background features a faint, light-colored illustration of several trees with circular canopies and vertical trunks. A small heart shape is positioned in the upper right area of the background.

BANKS TERRACE

HURWORTH



Hurworth

Hurworth-on-Tees is a popular village, set within the twists and turns of the River Tees, on the southern edge of Darlington. The village green is framed by mature trees and handsome period houses, forming the heart of a community that has evolved over centuries while retaining a distinct character. Georgian, Victorian and Arts and Crafts influences sit comfortably alongside older stone cottages, creating a rich architectural tapestry. The surrounding countryside unfolds in all directions, with riverside walks, open farmland and ancient woodland offering an ever-changing backdrop to daily life.

Hurworth is remarkably well connected, with Darlington's railway station and direct services to London, York and Edinburgh within easy reach. The result is a village that feels both secluded and connected: a place where landscape, architecture and community exist in rare harmony. For golf enthusiasts, the prestigious Rockliffe Hall Hotel, Golf Club & Spa is just a five-minute walk away, offering championship golf, luxury spa facilities, and exceptional dining. The village is also home to the Michelin-starred Bay Horse, renowned for its outstanding cuisine, warm hospitality, and elegant setting.

Banks Terrace is an elegant Regency terrace in the historic village of Hurworth, dating from the early decades of the 19th century. Built during a period when architecture used balance, proportion and quiet refinement, its restrained classical detailing, symmetrical façades and tall sash windows embody the grace of the Regency age.

Now a listed property, more than two centuries later, Banks Terrace retains much of its original character, offering a rare glimpse into an era when classical design and domestic life were brought together with remarkable sophistication.



A beautiful welcome...

A flight of broad stone steps rises from the terrace to the front door, where the house reveals itself gradually. The entrance hall is a wonderfully composed space; calm, restrained and beautifully proportioned. Soft, chalky tones sit alongside cast-iron radiators and carefully considered finishes, creating an immediate sense of quiet confidence. It is a fitting introduction to a house where every room has been thoughtfully shaped and sensitively restored.

To the left, the first reception room unfolds beneath lofty ceilings, its generous proportions illuminated by tall fully renovated sash windows overlooking the communal gardens. Currently arranged as a sitting room, it would lend itself equally well to more formal dining. Warm timber floors run underfoot, while an open fireplace anchors the room, bringing texture and intimacy to the scale of the space.

From here, the plan opens naturally into the kitchen, forming a series of interconnected rooms that are both sociable and wonderfully fluid. At its centre sits a substantial island, crafted in a style that balances contemporary simplicity with traditional joinery. Another sash window frames views of the private courtyard garden beyond, drawing light deep into the room throughout the day.

The effect is one of effortless generosity; spaces that are open yet distinct, refined yet comfortable. Whether gathered around the island with friends, dining with family or simply enjoying the changing light through the sash windows, this is the true heart of the house.







Downstairs...

The house unfolds across four beautifully considered storeys, each level flowing naturally into the next. From the principal living spaces, a gentle descent leads to the private courtyard garden, alongside a discreetly positioned cloakroom, thoughtfully integrated into the plan.

Beyond, the lower-ground floor reveals a sequence of spaces that feel both interconnected and independent; carefully designed to create a sense of cohesion while allowing each room its own distinct character and purpose.

At the front, a generously proportioned room opens through French doors onto the terrace of houses, across to the communal gardens beyond. Currently used as a sitting room, it has a wonderfully intimate quality; a peaceful retreat that feels gently connected. Equally, its position and proportions would lend themselves well to use as an additional bedroom. The comfort of underfloor heating elevates the space, adding a subtle sense of luxury and ensuring warmth is felt from the moment you step inside.

To the rear, a contrasting space is flooded with natural light. Softly decorated, with half-height panelling and a restrained palette, the room has a calm, contemplative atmosphere. It is currently used as a yoga studio, though its adaptable nature would suit a variety of uses, whether as a studio, study, guest room or further reception space.

Practical elements have been incorporated with the same thoughtful approach evident throughout the house. A utility room and plant room are neatly arranged on this level, providing functional space without compromising the calm and considered character that defines the home.







Time to relax...

The staircase rises through the house with quiet elegance, its painted treads softened by a runner and framed by a striking balustrade. Above, the first floor unfolds around a generous landing, from which two bedrooms and the family bathroom are arranged.

The principal bedroom occupies a particularly enviable position at the front of the house, with windows framing leafy views across the communal gardens. Beautifully proportioned, the room retains many of its original architectural details, including decorative corncicing, deep skirting boards and lofty ceilings that enhance the sense of volume and light. The atmosphere is one of peaceful refinement, with a palette and finish that allow the period character to take centre stage.

Beyond lies an en suite bathroom of remarkable elegance grounded by Carrara marble tiles and the hidden luxury of underfloor heating. A freestanding roll-top bath is positioned beside the window, creating a space that feels both indulgent and restorative. Morning light pours across the room, while in the evening it becomes a place to retreat and unwind. Alongside, a separate shower and carefully selected fittings bring a contemporary layer of comfort, all executed with the same thoughtful attention to detail found throughout the house.



A place to unwind...

To the rear, the second bedroom echoes the quiet elegance found throughout the house. While more intimate in scale than the principal suite, it possesses the same sense of proportion and architectural integrity that defines the home's upper floors.

Natural light pours through a large sash window, illuminating a room rich in original detail. Deep skirting boards, decorative cornicing and lofty ceiling heights combine to create a space that feels both characterful and serene. A handsome fireplace, currently boarded and sensitively finished, remains a focal point within the room, its decorative surround providing a reminder of the building's Regency origins. There is a calmness here that makes the room equally suited to use as a guest bedroom, children's room or study, offering flexibility without compromising on character.

Serving this floor is the family bathroom, a carefully considered space where contemporary craftsmanship sits in quiet dialogue with the home's original character.

Decorative coving softens the clean architectural lines, while carefully chosen fittings and a restrained material palette create a sense of understated luxury. Both practical and elegant, it is a room designed for everyday use but executed with the same level of care and consideration evident throughout the house.







A quiet retreat...

The ascent continues to the uppermost floor, where the house reveals another layer of accommodation tucked beneath the roofline. Here, the character shifts subtly; ceilings follow the contours of the building, creating a series of intimate spaces that feel quietly removed from the floors below.

The principal room on this level occupies much of the floor, with a window framing roof top and tree canopy views. Set within the eaves, it has a distinctly private quality, almost as though it exists as a suite of its own. Bathed in natural light and separated from the main bedroom floor, it offers a peaceful retreat, equally suited as a bedroom, studio or reading room. There is a sense of calm here that is difficult to replicate; a space removed from the rhythms of the rest of the house.

Alongside sits a smaller room, full of charm and possibility. Illuminated by a rooflight, it shares the same restrained palette found throughout the home, with soft tones enhancing the natural light. Its modest proportions make it wonderfully adaptable; a nursery, dressing room, study or occasional bedroom would all feel entirely at home here.

Together, these rooms bring a further layer of flexibility to the house, demonstrating once again the thoughtful balance between practicality, comfort and character that runs throughout the building.

Outside...

Outside, the house enjoys access to beautifully maintained communal gardens; a rare and valuable extension of the living space. Set at the heart of the terrace, the gardens have the atmosphere of a private Georgian square, with broad expanses of lawn enclosed by mature trees, shrubs and established planting. The effect is one of surprising tranquillity; a green and sheltered landscape that feels removed from the pace of everyday life.

To the rear, a south-facing private courtyard garden provides a more intimate outdoor setting. Thoughtfully designed and sensitively landscaped, reclaimed brick paving gives way to gravel, while carefully positioned planting softens the boundaries and brings texture and seasonal interest throughout the year. Mature trees and greenery lend a sense of enclosure, creating a space that feels both grounded and restorative.

An original brick-built former wash house sits quietly within the courtyard, providing useful storage while contributing to the property's rich sense of character. Like so much of the house, it has been retained and integrated with care, celebrating the building's heritage rather than competing with it.

Number 3 Banks Terrace is a house that has been restored with remarkable sensitivity and attention to detail. Across four floors, period features have been preserved and enhanced, while contemporary interventions have been introduced with a light touch and a clear understanding of the building's history. The result is a home of considerable warmth and character; one that feels both timeless and deeply personal, where every decision has been made with care for the architecture, the materials and the experience of living within its walls.





Finer Details

Postcode: DL2 2DE

Freehold

Council Tax Band: TBC

EPC Rating: TBC

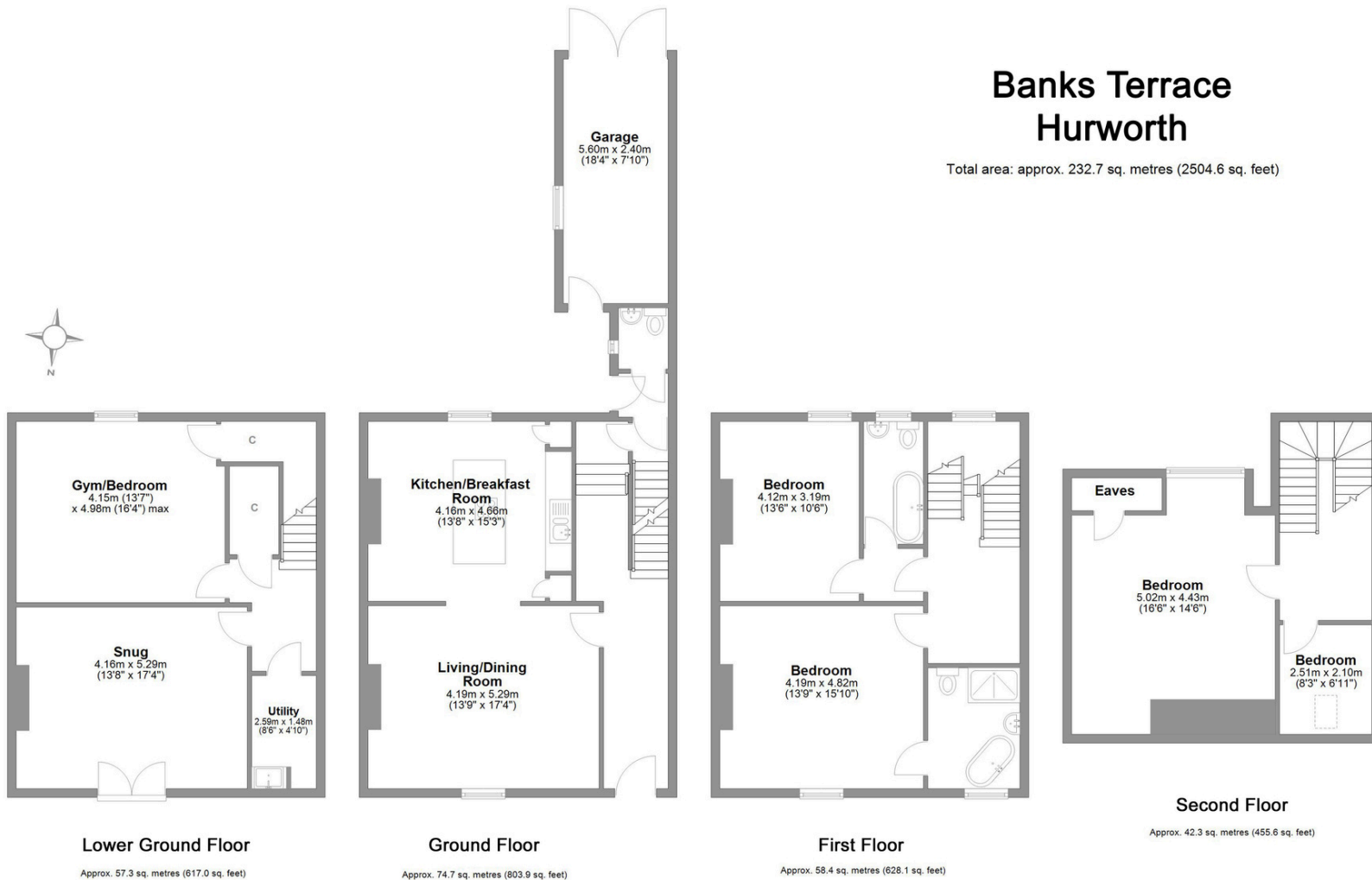
Gas Central Heating

Bank Terrace Maintenance Fee - £20 pcm

Parking - Private parking area and on-street

Banks Terrace Hurworth

Total area: approx. 232.7 sq. metres (2504.6 sq. feet)



LOVE PROPERTY

Whilst every attempt has been made to ensure the accuracy of the floorplans contained here, measurements of doors, windows, rooms and any other items are approximate and no responsibility is taken for any error, omission or mis-statement. This plan is not drawn to scale and is for illustrative purposes only & should be used as such by any prospective purchaser. Created especially for Love Property by Vue3sixty Ltd