



Hamilton Court
Leighton Buzzard, LU7
Price **£110,000**



1



1



1



C



QUARTERS
YOUR NEXT MOVE

Hamilton Court, Leighton Buzzard, LU7 1JF

We are delighted to offer for sale with no upper chain this one bedroom first floor retirement apartment, ideally located within walking distance of the town centre which has an excellent selection of shops and amenities. There is an excellent over-60's community spirit at Hamilton Court, and the property is presented to the market in good order with accommodation comprising: Entrance hallway, lounge/dining room, kitchen, double bedroom and a shower room . Additional benefits include double glazed windows, on-site facilities including laundry room, social lounge, and communal parking. Viewing is highly recommended.

Location:

Hamilton Court is situated within easy walking distance of the Town Centre, with a mixture of high street stores and independent shops, as well as cafes, restaurants and other amenities, including a twice weekly market. The property is well situated for public transport and road links, with the A505 and A5 providing access to the neighbouring towns of Aylesbury, Bedford and Milton Keynes. The nearby Junction 11A of the M1 provides road links to London and further afield. Additionally, the mainline train station provides regular trains to London Euston in as little as 30 minutes. The town also enjoys a close proximity to a number of outstanding country parks and walks, including the Grand Union Canal, Linslade Wood, Tiddenfoot Waterside Park and the picturesque 400 acre Rushmere Country Park.

Layout:

Enter via the front door to a spacious hallway with doors to the shower room, bedroom, lounge and an airing cupboard. Additionally there is an emergency intercom and security door system panels. The shower room has been refitted with a modern shower cubicle, low level WC and vanity wash hand basin. The double bedroom faces the front aspect of the property and provides ample space for a variety of bedroom furniture. The lounge/dining room has a bright and airy feel due to the good size window at the front and provides a wealth of space for a range of living and dining room furniture. Off the lounge/dining room is a well proportioned kitchen with a fitted oven and hob, and there is additional space for various white goods and ample work surface space.

Additionally the kitchen benefits from a good size window to the front aspect.

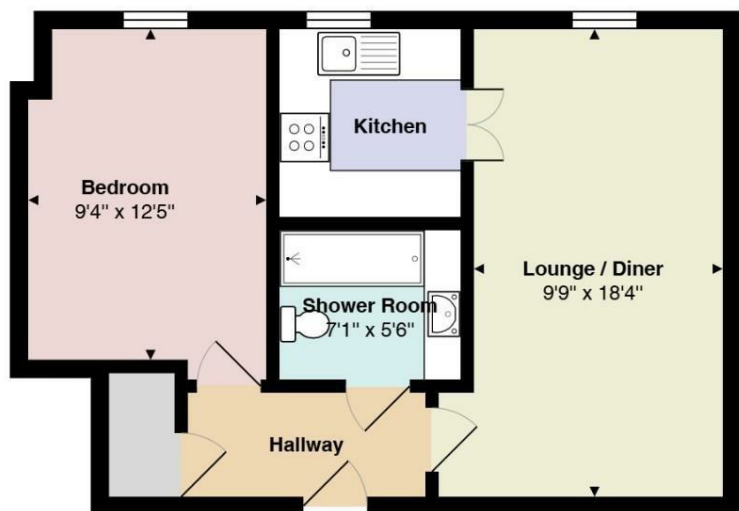
Communal facilities:

There are a range of communal facilities at Hamilton Court including a social lounge, hairdressers, laundry room and a guest suite. There are also regular social events for residents.

Outside:

Hamilton Court benefits from communal gardens and parking.

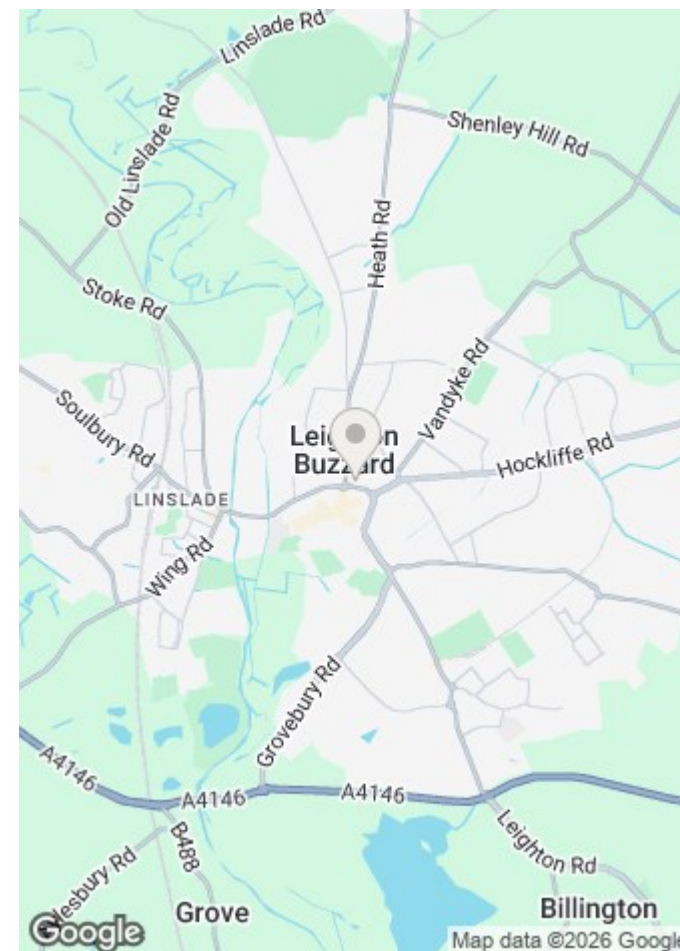
Floor Plan



Total Area: 478 ft²

All measurements are approximate and for display purposes only

Map



17-21 Ropa Court, Leighton Buzzard, Bedfordshire, LU7 1DU

T: 01525 853733 E: info@quarterslb.co.uk

www.quartersestateagents.co.uk

