



jordanfishwick

Apt 413 Chorlton Mill, Cambridge Street,
£1,250 Per Calendar Month



Chorlton Mill Manchester M1 5BZ

£1,250 Per Calendar Month



The Property

Available Mid February. Jordan Fishwick are delighted to bring to the market this gorgeous one bedroom fourth floor apartment, in one of Manchester's most popular conversion developments. The apartment benefits from original features such as exposed brickwork, cast iron columns and double barrelled ceilings. A perfect apartment for a professional couple wanting an immaculate apartment full of character within a short stroll of Oxford Road and Whitworth Street West. Spacious hall, large living/kitchen, attractive bathroom and bedroom. Furnished. No parking. Tax Band C. EPC Rating TBC.

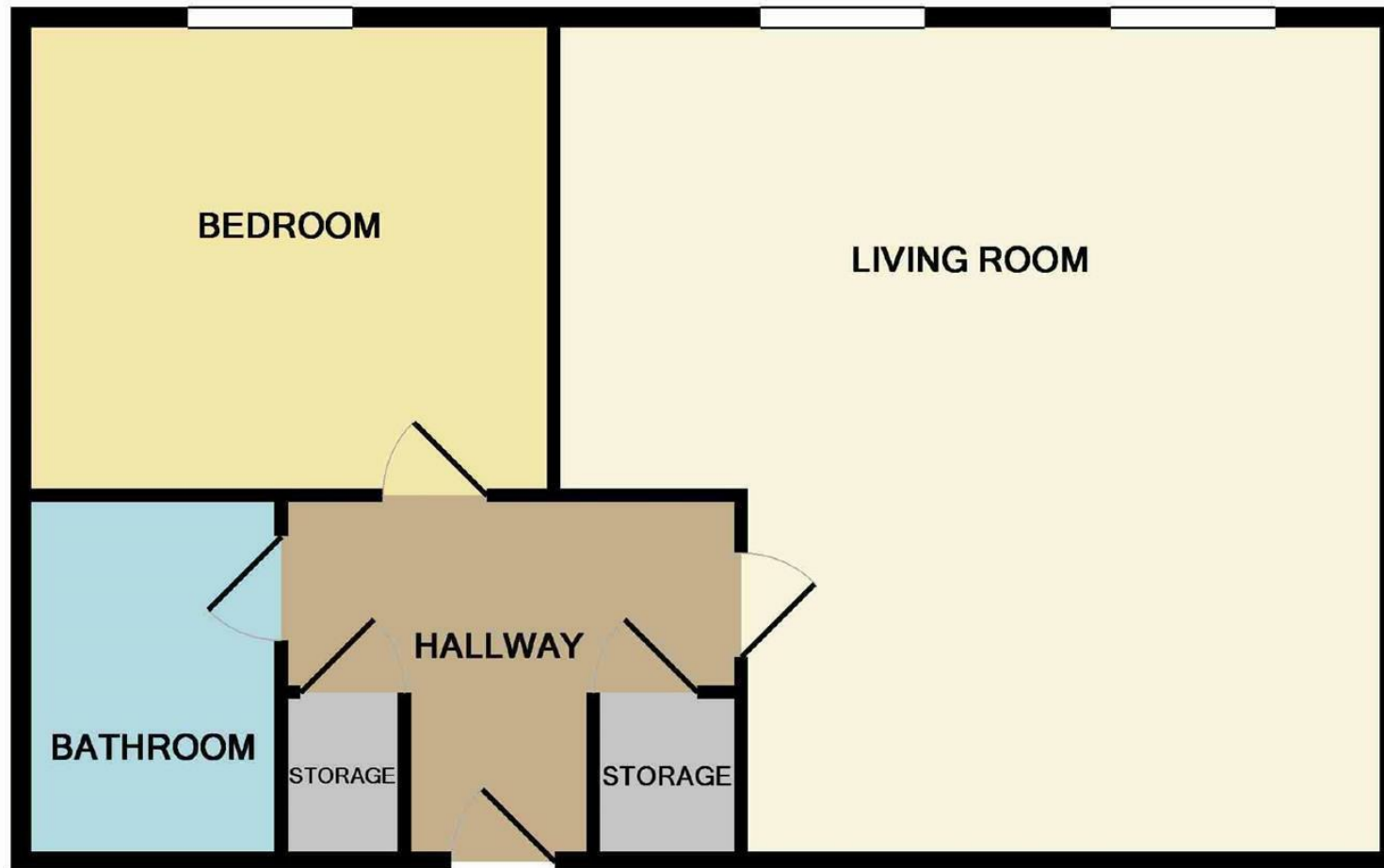
VIDEO/ PHOTO OFFERS NOT ACCEPTED - PLEASE CALL TO BOOK A VIEIWIN

- Available Mid February
- 4th Floor Apartment
- One Bedroom Furnished
- Close to University
- Tax Band
- EPC Rating TBC
- No Parking
- Mill Conversion
- On Site Concierge



Energy Efficiency Rating		
	Current	Potential
Very energy efficient - lower running costs		
(92 plus) A		
(81-91) B		
(69-80) C		
(55-68) D	66	68
(39-54) E		
(21-38) F		
(1-20) G		
Not energy efficient - higher running costs		
England & Wales		EU Directive 2002/91/EC





Measurements are approximate. Not to scale. Illustrative purposes only
Made with Metropix ©2014



These particulars are believed to be accurate but they are not guaranteed and do not form a contract. Neither Jordan Fishwick nor the vendor or lessor accept any responsibility in respect of these particulars, which are not intended to be statements or representations of fact and any intending purchaser or lessee must satisfy himself by inspection or otherwise as to the correctness of each of the statements contained in these particulars. Any floorplans on this brochure are for illustrative purposes only and are not necessarily to scale.

Offices at: Offices at Chorlton, Didsbury, Disley, Hale, Glossop, Macclesfield, Manchester Deansgate, Manchester Whitworth Street, New Mills, Sale, Wilmslow and Withington