

for sale

£380,000



Wheatfield Avenue Chippenham SN14 0FX

Three Bedroom Detached house in sought after location. The property offers spacious living room and a well equipped kitchen/diner to the Ground Floor with Three Bedrooms with ensuite and Family Bathroom. Externally there is a single garage and parking.



Wheatfield Avenue Chippenham SN14 0FX

Description

Situated in the highly sought-after area of Wheatfield Avenue, this attractive three-bedroom detached home offers spacious and versatile living accommodation, perfect for families and professionals alike.

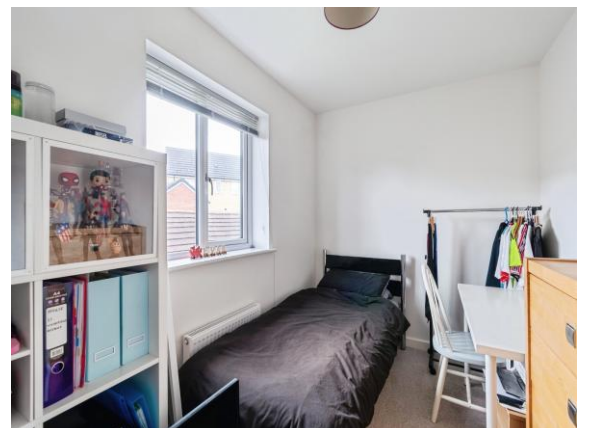
The property welcomes you with a bright entrance hallway leading to a generously sized living room, ideal for relaxing or entertaining guests. The modern fitted kitchen/dining area provides ample storage and workspace, with patio doors opening onto the private rear garden— perfect for outdoor dining and summer gatherings.

Upstairs, the property boasts three well-proportioned bedrooms, including a comfortable master bedroom with en-suite and two additional rooms suitable for children, guests, or a home office. A

contemporary family bathroom completes the first floor.

Externally, the home benefits from a well-maintained rear garden, offering both lawn and patio areas, as well as off-road parking and a garage, adding convenience and extra storage.

Situated within easy reach of local schools, amenities, and transport links, including Chippenham town centre and mainline railway station, this property combines peaceful residential living with excellent connectivity.



Ground Floor

Entrance Hall

Stairs to First Floor. Doors to Cloakroom, Living Room and Kitchen/Diner.

Cloakroom

Suite comprising low level WC and wash hand basin.

Living Room

Window to front. French doors to rear.

Kitchen/Diner

Fitted with a matching range of base and wall units with complementary work surfaces over with inset sink and drainer. Integrated oven and hob with cooker hood over. Plumbing for washing machine. Space for fridge/freezer. Window to front. French doors to rear.

First Floor

Landing

Stairs from Ground Floor. Doors to all Bedrooms and Bathroom.

Bedroom One

Window to rear. Door to Ensuite.

Ensuite

Suite comprising low level WC, pedestal wash hand basin and walk in shower cubicle. Window to front.

Bedroom Two

Window to front.

Bedroom Three

Window to rear.

Bathroom

Suite comprising low level WC, wash hand basin and bath with shower over. Part tiled walls. Window to front.

Outside

Front

Lawn area. Driveway parking leading to the Garage.

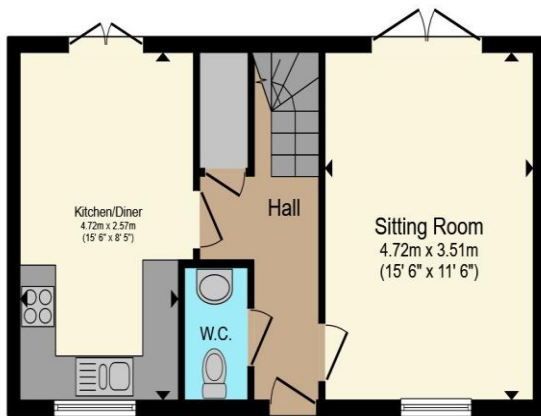
Single Garage

With up and over door.

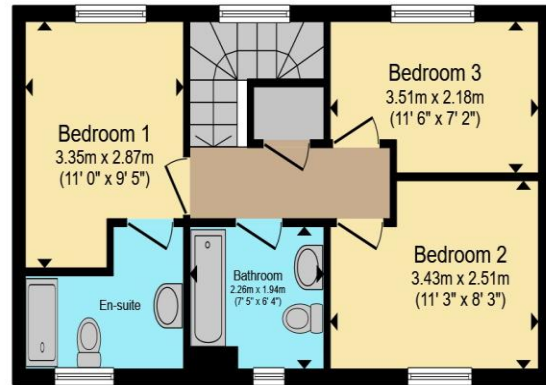
Rear Garden

Fully enclosed. Mainly laid to lawn with patio area.





Ground Floor



First Floor

Total floor area 81.5 m² (878 sq.ft.) approx

This floor plan is for illustrative purposes only. It is not drawn to scale. Any measurements, floor areas (including any total floor area), openings and orientation are approximate. No details are guaranteed, they cannot be relied upon for any purpose and they do not form part of any agreement. No liability is taken for any error, omission or misstatement. A party must rely upon its own inspection(s). Powered by www.propertybox.io



To view this property please contact Connells on

T 01249 652 476
E chippenham@connells.co.uk

59 Market Place
 CHIPPENHAM SN15 3HL

Property Ref: CHM306579 - 0005

Tenure:Freehold EPC Rating: B

Council Tax Band: D

view this property online
connells.co.uk/Property/CHM306579



1. MONEY LAUNDERING REGULATIONS Intending purchasers will be asked to produce identification documentation at a later stage and we would ask for your co-operation in order that there will be no delay in agreeing the sale. 2. These particulars do not constitute part or all of an offer or contract. 3. The measurements indicated are supplied for guidance only and as such must be considered incorrect. Potential buyers are advised to recheck measurements before committing to any expense. 4. We have not tested any apparatus, equipment, fixtures, fittings or services and it is in the buyers interest to check the working condition of any appliances.

Connells Residential is registered in England and Wales under company number 1489613, Registered Office is Cumbria House, 16-20 Hockliffe Street, Leighton Buzzard, Bedfordshire, LU7 1GN. VAT Registration Number is 500 2481 05.

see all our properties at www.connells.co.uk | www.rightmove.co.uk | www.zoopla.co.uk