



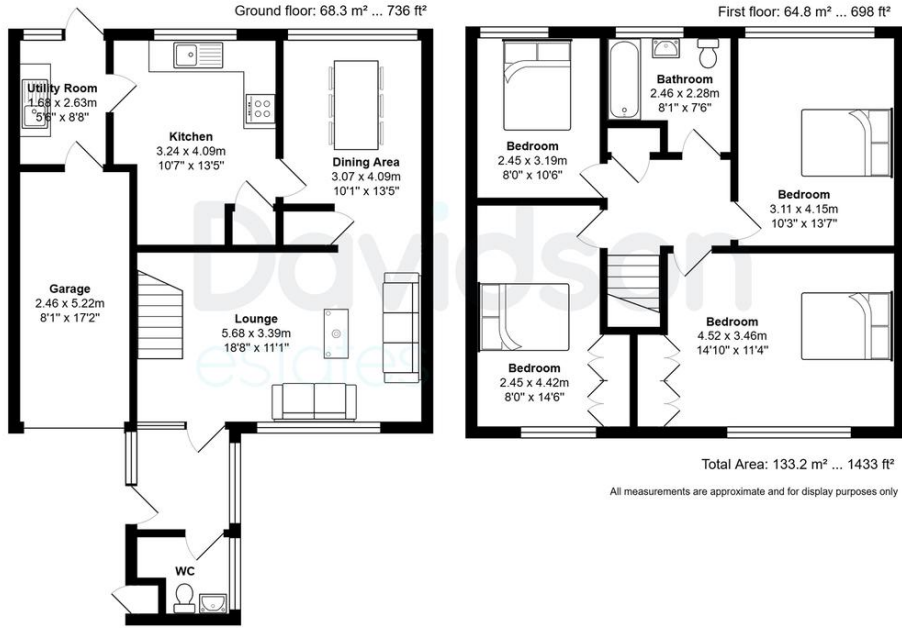
ANSTRUTHER ROAD, EDGBASTON

BIRMINGHAM, B15 3NN

£550,000
FREEHOLD

ANSTRUTHER ROAD | Four Bedrooms | Two Receptions | Large Plot | No Chain |
Located on the Calthorpe Estate

Davidson



Floorplan measurements are for illustrative purpose only. Floor plan by www.sebastiano.co.uk.

Score	Energy rating	Current	Potential
92+	A		
81-91	B		
69-80	C		76 C
55-68	D	58 D	
39-54	E		
21-38	F		

Davidson

OFFICE
 22 Harborne Road
 Birmingham
 West Midlands
 B15 3AA

0121 455 7727
 info@davidsonstates.co.uk
 www.davidsonstates.co.uk

Agents Note: Whilst every care has been taken to prepare these particulars, they are for guidance purposes only. All measurements are approximate and are for general guidance purposes only and whilst every care has been taken to ensure their accuracy, they should not be relied upon and potential buyers/tenants are advised to recheck the measurements