



196 Bradbury Lane, Hednesford, WS12 4EP

£925 Per Month

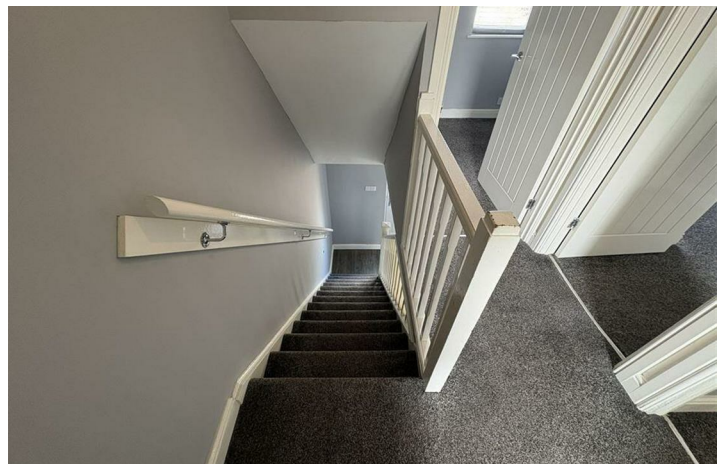
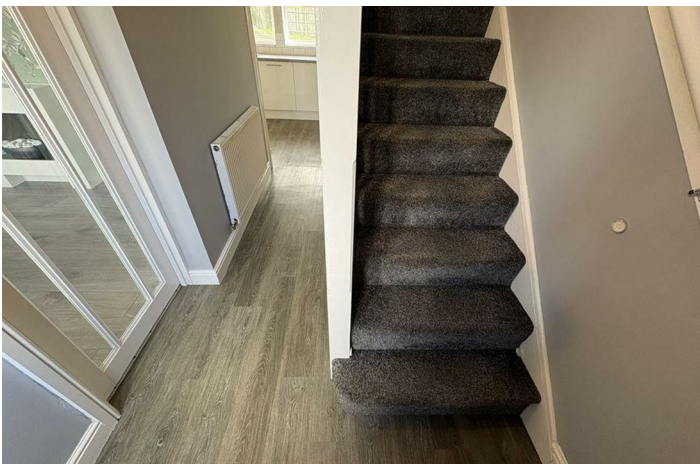
- Semi-detached house
- Lovely garden space
- 3 spacious bedrooms
- Close to local amenities

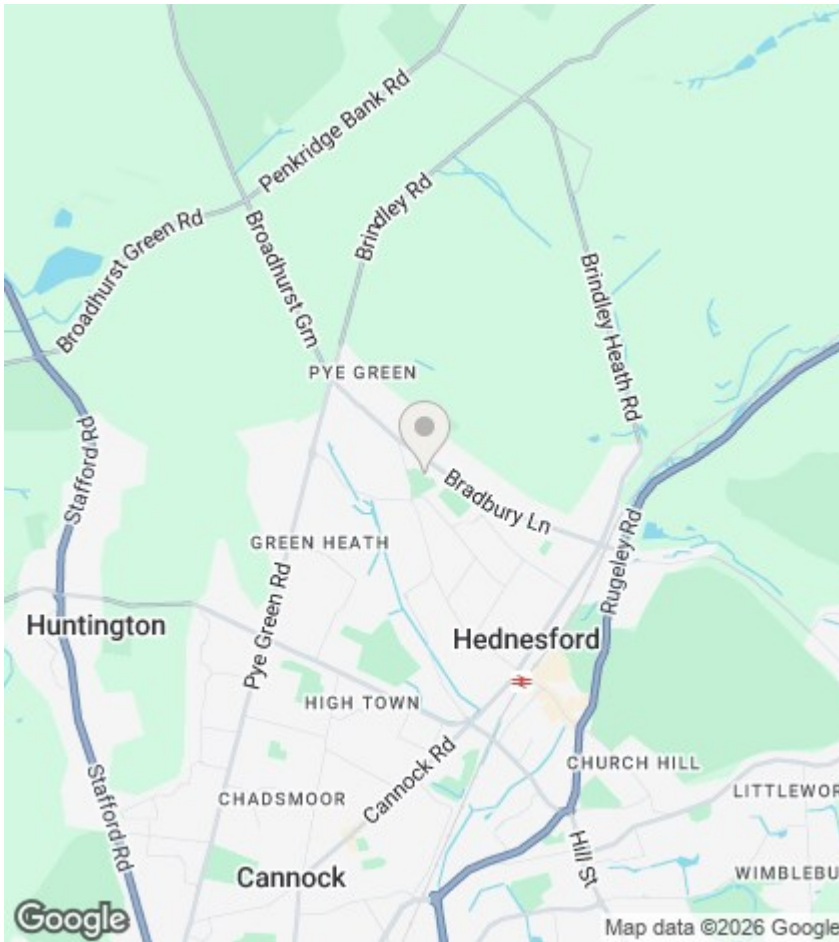
196 Bradbury Lane, Hednesford WS12 4EP

Chariot Estates are pleased to market this three bedroom semi-detached house, briefly comprising of Gas central heating, double glazing, entrance hallway, fitted kitchen, lounge, three bedrooms, bathroom, rear garden, off road parking, Rent £925 pcm, Holding deposit £213.46, Deposit £1067.30, Epc D, Council Tax band A



Council Tax Band: A





Directions

Viewings

Viewings by arrangement only. Call 01543 686877 to make an appointment.

EPC Rating:

D

