



£299,995

Quilters Place, New Eltham, SE9 2BF

Chattertons

EST 1893

This is a unique property and would make for a perfect first time buy but might also be great for someone downsizing. This is a lovely house with private driveway presented in immaculate condition. Located near the end of a quiet cul de sac and 5 minutes away from New Eltham mainline station. The ground floor has a lounge with open plan kitchen and cloakroom with a double bedroom upstairs with en suite along with great storage. 990 year lease and no ground rent.



Unique property
Ground floor cloakroom
Upstairs bathroom
Double bedroom
En Suite

Entrance Hall
Laminate flooring, radiator

Lounge and Kitchen 18' 8" x 14' 1" (5.69m x 4.29m)
Double glazed window to the front and side, laminate flooring, under stairs storage, fitted wall and base units with laminated work surface, stainless steel single drainer sink unit with mixer taps, integrated oven and gas hob with extractor hood, plumbing for washing machine, double radiator

Ground Floor Cloakroom
Frosted double glazed window, pedestal wash hand basin with mix taps, low level wc, radiator, vinyl floor covering

Lounge and open plan kitchen
Private driveway
Near the end of a cul de sac
Immaculate condition
5 minutes to New Eltham mainline station

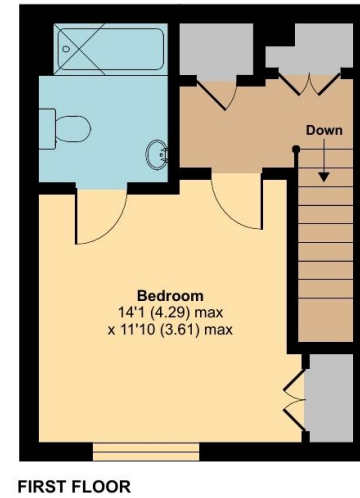
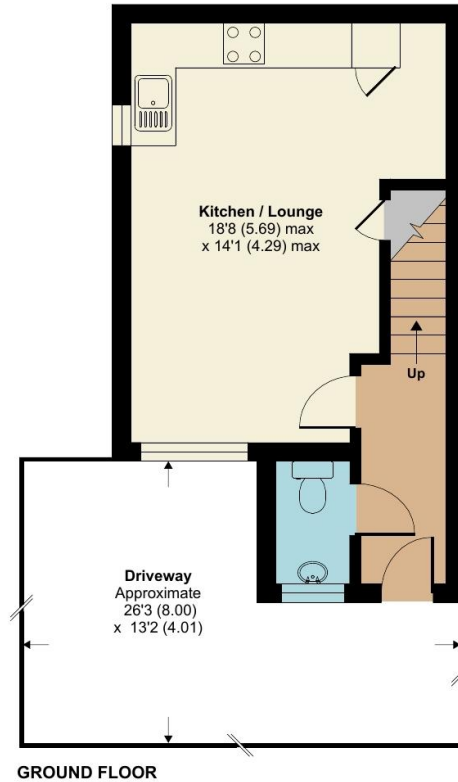
Stairs to the first floor
Landing, access to loft which provides great extra storage, large wardrobe, and separate storage cupboard

Bedroom 14' 1" x 11' 10" (4.29m x 3.60m)
Double glazed window, radiator, wood flooring, double radiator

En Suite
Frosted double glazed window, panelled bath with mixer taps and shower attachment and screen low level wc, pedestal wash hand basin with mixer taps, radiator, vinyl floor covering

Private Driveway
Providing off road parking to the front





Eastnor Road, London, SE9

Approximate Area = 581 sq ft / 54 sq m

For identification only - Not to scale

 Floor plan produced in accordance with RICS Property Measurement 2nd Edition, Incorporating International Property Measurement Standards (IPMS2 Residential). © nichecom 2025. Produced for Chattertons Estate Agents Ltd. REF: 1264315

All dimensions are approximate and are quoted for guidance only, their accuracy cannot be confirmed. Reference to appliances and/or services does not imply they are necessarily in working order or fit for the purpose. Buyers are advised to obtain verification from their solicitors as to the freehold/leasehold status of the property, the position regarding any fixtures and fittings and where the property has been extended / converted as to Planning approval and Building Regulation compliance. These particulars do not constitute or form part of an offer or contract, nor may they be regarded as representations. All interested parties must themselves verify their accuracy. Where a room layout is included this is for general guidance only, it is not to scale and its accuracy cannot be confirmed. Ref Code:

020 8859 4000

405 Footscray Road
New Eltham SE9 3UL

sales.neweltham@chattertons.org.uk

Chattertons

EST 1893