



[www.chrystals.co.im](http://www.chrystals.co.im)

Apartment 5 Fairways Court, Hampton Farm, Douglas, IM2 2DN

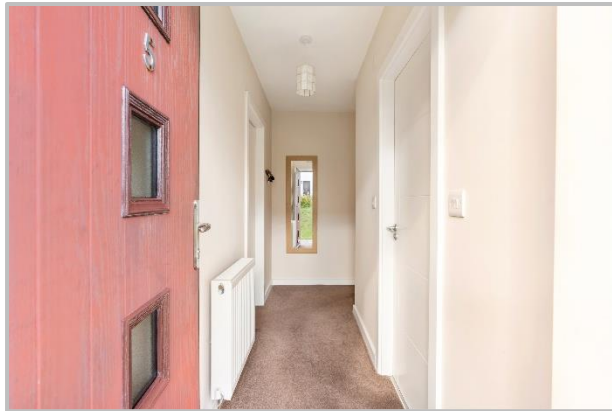
**Asking Price £225,000**



## Apartment 5 Fairways Court, Hampton Farm, Douglas, IM2 2DN

**Asking Price £225,000**

Modern, stylish ground-floor, purpose-built two-bedroom apartment in a popular residential development. This well-presented home offers spacious, light, and airy accommodation throughout. Ideally located at the end of a quiet cul-de-sac, it's within easy reach of local schools, shops, bus routes, and the town centre. The property comprises entrance hall, dual-aspect living/dining room with an open-plan modern kitchen. Two good-sized bedrooms and a modern bathroom. Additionally, there are two designated parking spaces. Ideal for first-time buyers or investors. This apartment blends contemporary comfort with convenient style living, providing a bright, welcoming space to call home.



## LOCATION

Travelling out of Douglas from Quarterbridge roundabout head south along the New Castletown Road. The entrance to Hampton Farm is located on the left hand side between the Anagh Coar traffic lights and Cooil Road roundabout.

## ENTRANCE HALL

## LIVING ROOM

14' 9" x 11' 2" (4.5m x 3.4m)

## KITCHEN

13' 5" x 10' 2" (4.1m x 3.1m)

## BEDROOM

9' 2" x 13' 9" (2.8m x 4.2m)

## BEDROOM

9' 10" x 12' 6" (3m x 3.8m)

## BATHROOM

6' 3" x 7' 10" (1.9m x 2.4m)

## OUTSIDE

2 Parking Spaces (Number 5) Front and Side

## TENURE

Leasehold - 999 year lease from 2013.

Service Charge - £1,200 per annum.

The apartments are managed by Stirling Management Company. Pets Allowed.

## SERVICES

Mains water, electricity and drainage. Gas central heating.

## VIEWING

Viewing is strictly by appointment through CHRYSTALS. Please inform us if you are unable to keep appointments.

## POSSESSION

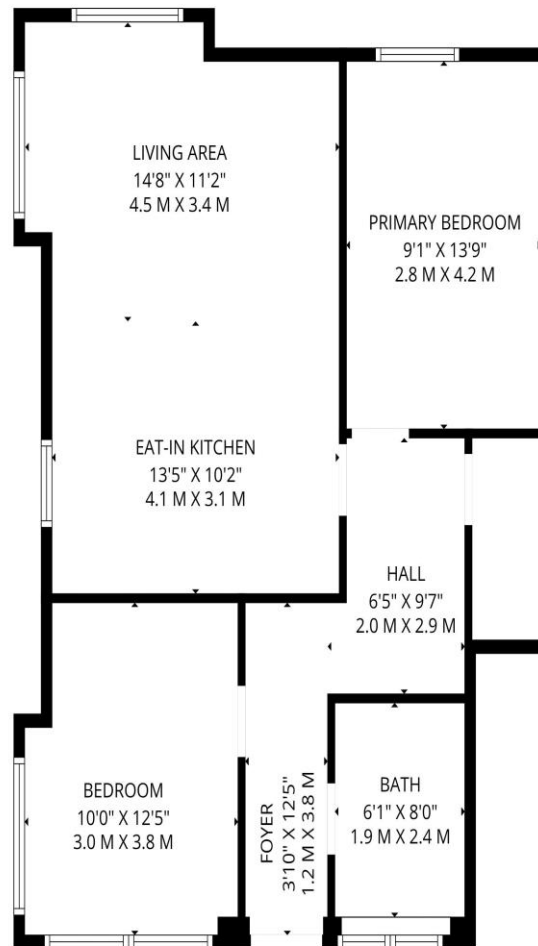
Vacant possession on completion of purchase. The company do not hold themselves responsible for any expenses which may be incurred in visiting the same should it prove unsuitable or have been let, sold or withdrawn. DISCLAIMER - Notice is hereby given that these particulars, although believed to be correct do not form part of an offer or a contract. Neither the Vendor nor Chrystals, nor any person in their employment, makes or has the authority to make any representation or warranty in relation to the property. The Agents whilst

endeavouring to ensure complete accuracy, cannot accept liability for any error or errors in the particulars stated, and a prospective purchaser should rely upon his or her own enquiries and inspection. All Statements contained in these particulars as to this property are made without responsibility on the part of Chrystals or the vendors or lessors.









**TOTAL: 741 sq. ft, 69 m2**  
 FLOOR 1: 741 sq. ft, 69 m2  
 EXCLUDED AREAS: WALLS: 59 sq. ft, 5 m2



Since 1854



#### DOUGLAS

31 Victoria Street  
 Douglas IM1 2SE  
 T. 01624 623778  
 E. douglas@chrystals.co.im

#### PORT ERIN

23 Station Road  
 Port Erin IM9 6RA  
 T. 01624 833903  
 E. porterin@chrystals.co.im

#### COMMERCIAL

Douglas Office: 01624 625100, commercial@chrystals.co.im

#### RENTALS

Douglas Office: 01624 625300, douglasrentals@chrystals.co.im

Directors: Neil Taggart BSc (Hons), M.R.I.C.S.; Joney Kerruish BSc (Hons), M.R.I.C.S.; Dafydd Lewis BSc (Hons), M.R.I.C.S, MA (Cantab), Dip Surv Prac.  
 Registered in the Isle of Man No. 34808, Chrystal Bros, Stott & Kerruish Ltd. Trading as Chrystals. Registered Office, 31 Victoria Street, Douglas, Isle of Man IM1 2SE.