



83A Burton Road, Ashby-De-La-Zouch, LE65 2LG

£2,750 Per month

This stunning four-bedroom detached home in the sought-after town of Ashby-de-la-Zouch is beautifully presented to an exceptional standard, offering stylish and spacious accommodation across two floors and over 3000 sqft.

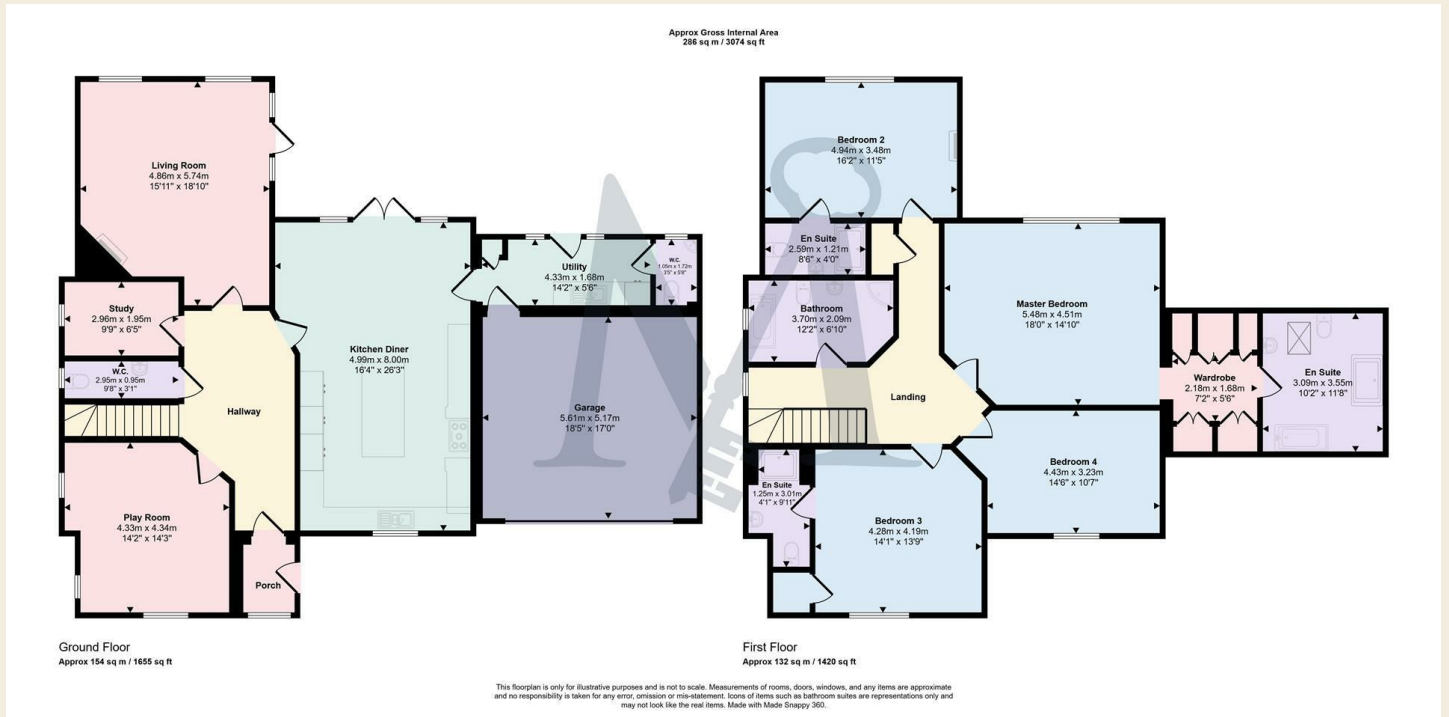
The ground floor boasts a versatile playroom along with a separate study, a generous living room featuring a charming woodburning stove, and a truly impressive open-plan dining kitchen, fully fitted with modern appliances and designed for both everyday living and entertaining. A separate utility room adds convenience, alongside two ground floor WCs.

Upstairs, the property continues to impress with a luxurious master bedroom suite complete with a walk-in dressing area and a truly spectacular four-piece en suite with an oval bath and walk in shower. There are three further double bedrooms, two of which benefit from their own stylish en suite facilities, as well as a contemporary four-piece family bathroom.

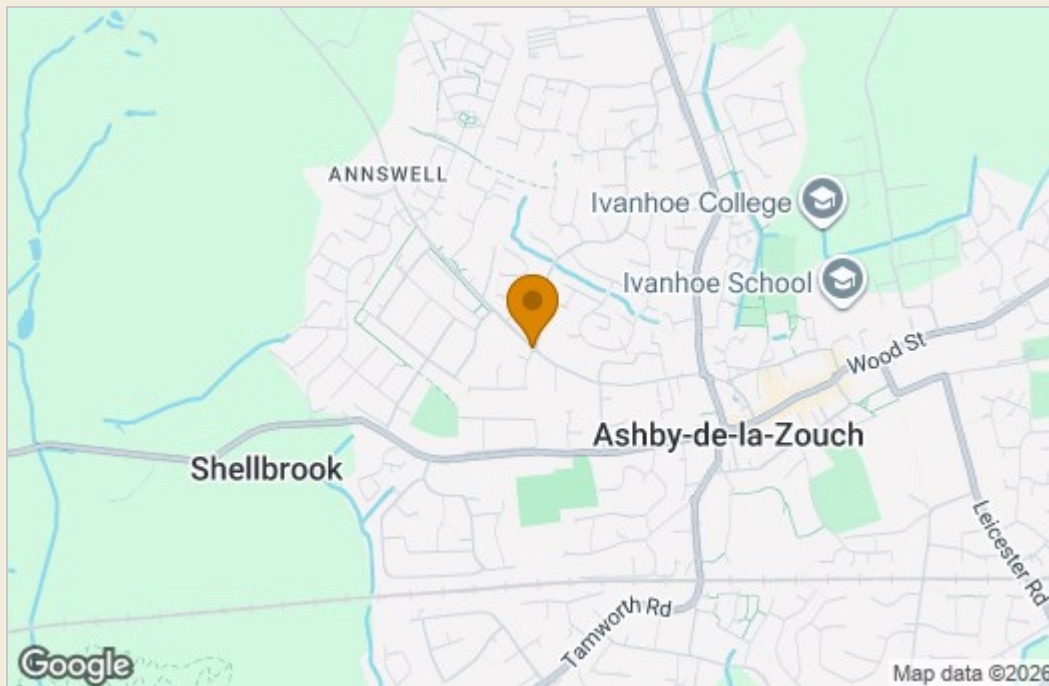
Externally, the home enjoys a beautifully landscaped garden that captures sunlight throughout the day, perfect for relaxing or entertaining. A gated private driveway provides secure off-road parking and enhances the property's sense of privacy.

Offered fully furnished and available for a 12-month let, this exceptional home combines high-quality finishes with generous living space in a desirable location.

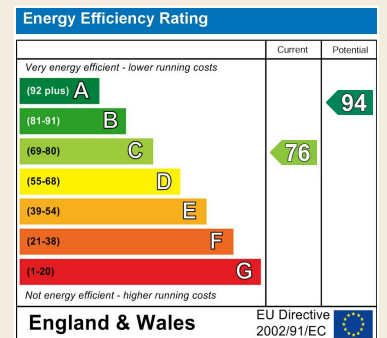
Floor Plan



Area Map



Energy Efficiency Graph



These particulars, whilst believed to be accurate are set out as a general outline only for guidance and do not constitute any part of an offer or contract. Intending purchasers should not rely on them as statements of representation of fact, but must satisfy themselves by inspection or otherwise as to their accuracy. No person in this firm's employment has the authority to make or give any representation or warranty in respect of the property.