

TO LET



Chadacre Road
£1,600 pcm


MARTIN&CO

Chadacre Road

Detached Bungalow,
2 bedroom, 2 bathroom

£1,600 pcm

Date available: 4th March 2022

Deposit: £1,846

Furnished

Council Tax band: E

- THREE RECEPTION ROOMS
- TWO DOUBLE BEDROOMS
- LARGE WEST FACING GARDEN
- CCTV COVERAGE
- BOARDED LOFT
- FULLY FURNISHED
- KITCHEN APPLIANCES



FULL DESCRIPTION

THREE RECEPTION ROOMS

TWO DOUBLE BEDROOMS

TWO BATHROOMS

Martin and Co are pleased to present a wonderful DETACHED Bungalow. This Property is fully equipped for a quick move being Fully Furnished to a high standard. This property consists of Two Double bedrooms, Large Living room, Dining room, Conservatory, Boarded loft, Kitchen, Main Bathroom and an En-suite. This Bungalow is situated in the heart of Thorpe bay on a quiet street with three off road parking spaces.

Furthermore, the property has a large west facing garden and CCTV that covers all corners. This is a rare find and viewings are a must. Enquire now for a chance to view. Disability Access.

LIVING ROOM 12' 1" x 18' 4" (3.7m x 5.6m)

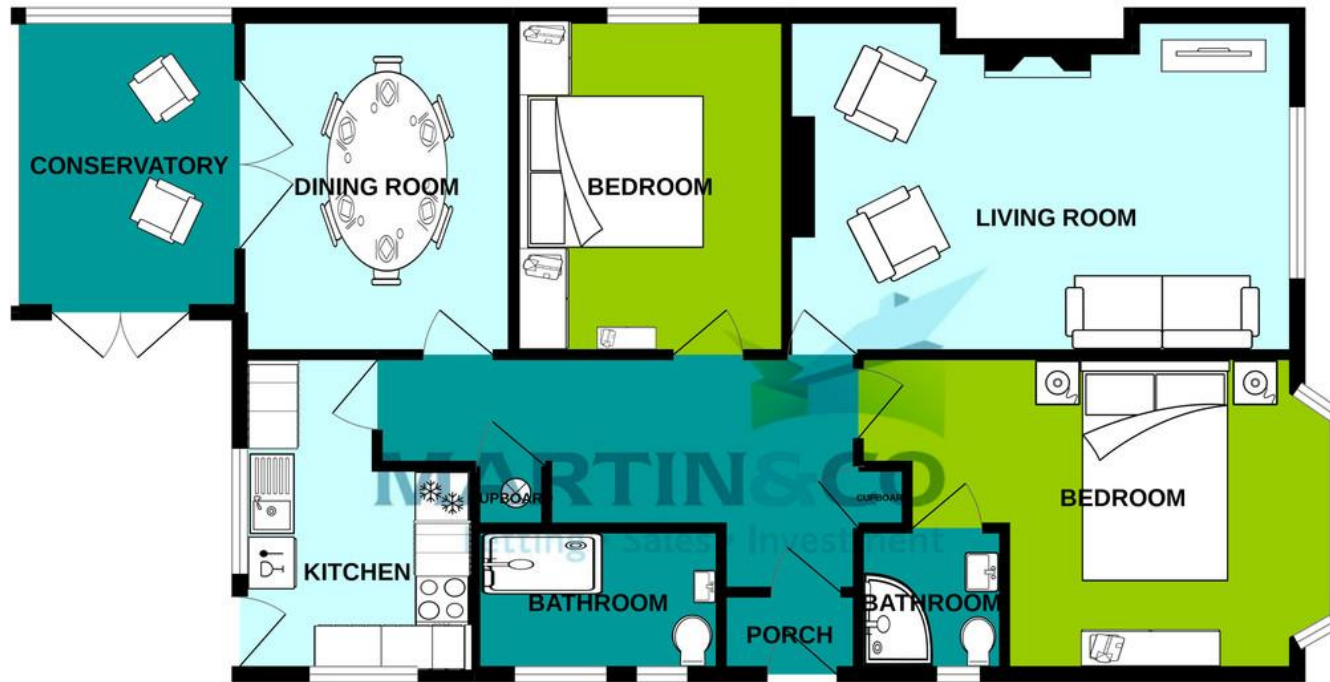
BEDROOM 1 11' 5" x 15' 8" (3.5m x 4.8m) INCLUDING EN-SUITE

ENSUITE 5' 2" x 5' 2" (1.6m x 1.6m)

PORCH 2' 11" x 4' 11" (0.9m x 1.5m)



GROUND FLOOR



Whilst every attempt has been made to ensure the accuracy of the floorplan contained here, measurements of doors, windows, rooms and any other items are approximate and no responsibility is taken for any error, omission or mis-statement. This plan is for illustrative purposes only and should be used as such by any prospective purchaser. The services, systems and appliances shown have not been tested and no guarantee as to their operability or efficiency can be given.

Martin & Co Southend

134a - 136a London Road • • Southend-On-Sea • SS1 1PQ
• E: southend@martinco.com

<http://www.martinco.com>



Accuracy: References to the Tenure of a Property are based on information supplied by the Seller. The Agent has not had sight of the title documents. A Buyer is advised to obtain verification from their Solicitor. Items shown in photographs including but not limited to carpets, fixtures and fittings are not included unless specifically mentioned within the sales particulars. They may however be available by separate negotiation. Buyers must check the availability of any property and make an appointment to view before embarking on any journey to see a property. No person in the employment of the agent has any authority to make any representation about the property, and accordingly any information given is entirely without responsibility on the part of the agents, sellers(s) or lessors(s). Any property particulars are not an offer or contract, nor form part of one. **Sonic / laser Tape:** Measurements taken using a sonic / laser tape measure may be subject to a small margin of error. **All Measurements:** All Measurements are Approximate. **Services Not tested:** The Agent has not tested any apparatus, equipment, fixtures and fittings or services and so cannot verify that they are in working order or fit for the purpose. A Buyer is advised to obtain verification from their Solicitor or Surveyor.