

Buy. Sell. Rent. Let.



Waltham Road, Scartho, Grimsby



When it comes to
property it must be


lovelle



£310,000



This immaculate semi-detached house in sought-after Scartho village offers an exquisite blend of modernity and period features across three storeys, including a rear ground floor extension, making it a perfect family home with ample space, strong local community, nearby schools, and exceptional amenities such as a stunning entrance hall, two reception rooms, a modern kitchen, four unique bedrooms, two bathrooms, and a meticulously landscaped rear garden with a hot tub area.

Key Features

- Open plan lounge/diner & kitchen
- Four unique bedrooms
- En-suite and family bathroom
- Large driveway and garage
- Landscaped low-maintenance garden
- uPVC double glazed & gas central heated
- EPC rating D
- Tenure: Freehold





Presenting a truly exquisite and immaculate semi-detached house for sale, situated in the sought after location of Scartho village. This property offers a rich blend of modernity and period features, set over three storeys with a rear ground floor extension. It is a perfect abode for families, with ample space, a strong local community and nearby schools.

Upon entering, you are greeted by a stunning entrance hall, designed with parquet flooring and a grand return staircase that leads to the first floor. An elegant cloakroom is situated off the entrance hall, equipped with motion sensor lighting, a high flush wc and sink.

The property features two reception rooms. The first is a spacious family lounge/diner, open plan to the kitchen. It is furnished with LVT herringbone flooring and bifold doors that lead to the garden, creating a seamless indoor-outdoor living space. The second reception room is a cozy sitting room, featuring an open fire and a bay window that floods the room with natural light.

The kitchen is a modern masterpiece, boasting stunning units, a centre island with seating, and integrated appliances including a fridge and freezer. Practicality is also considered with plumbing for both a dishwasher and a washer, and space for a large freestanding oven.

The property includes four bedrooms, each providing a unique living experience. Bedrooms 1 and 2 are both spacious double rooms, with the second bedroom also including built-in wardrobes. Bedroom 3 is a sizable single room. The fourth bedroom is situated on the second floor, offering a serene and private space.

Two impeccable bathrooms serve the property. The first is an en-suite to the first bedroom, featuring a shower, wc, sink, and towel radiator. The second is a family bathroom with a jacuzzi bath, sink, built-in storage, and a towel radiator, creating a comfortable bathing experience.

The exterior of the property does not fall short of the interior's charm. It features a large driveway leading up to a garage, providing plenty of off-street parking. The rear garden is a meticulously landscaped haven, requiring low maintenance. An added feature is the hot tub area, making the garden an ideal space for relaxation or entertainment.

The property is further enhanced with uPVC double glazing and gas central heating, ensuring a warm and comfortable living environment.

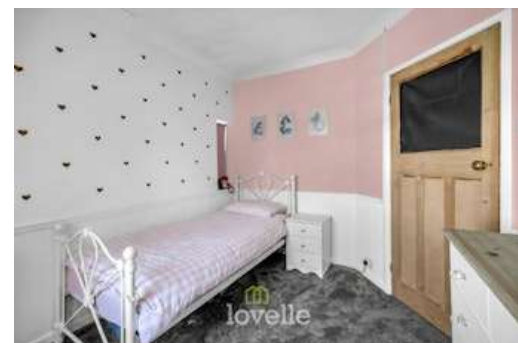
Finally, the location provides excellent public transport links and local amenities, making everyday life convenient and fulfilling. This property truly offers an idyllic family home in a desirable location, blending character, comfort, and convenience seamlessly.

Disclaimer

We endeavour to make our sales particulars accurate and reliable, however, they do not constitute or form part of an offer or any contract and none is to be relied upon as statements of representation or fact. Any services, systems and appliances listed in this specification have not been tested by us and no guarantee as to their operating ability or efficiency is given. All measurements have been taken as a guide to prospective buyers only, and are not precise. If you require clarification or further information on any points, please contact us, especially if you are travelling some distance to view.

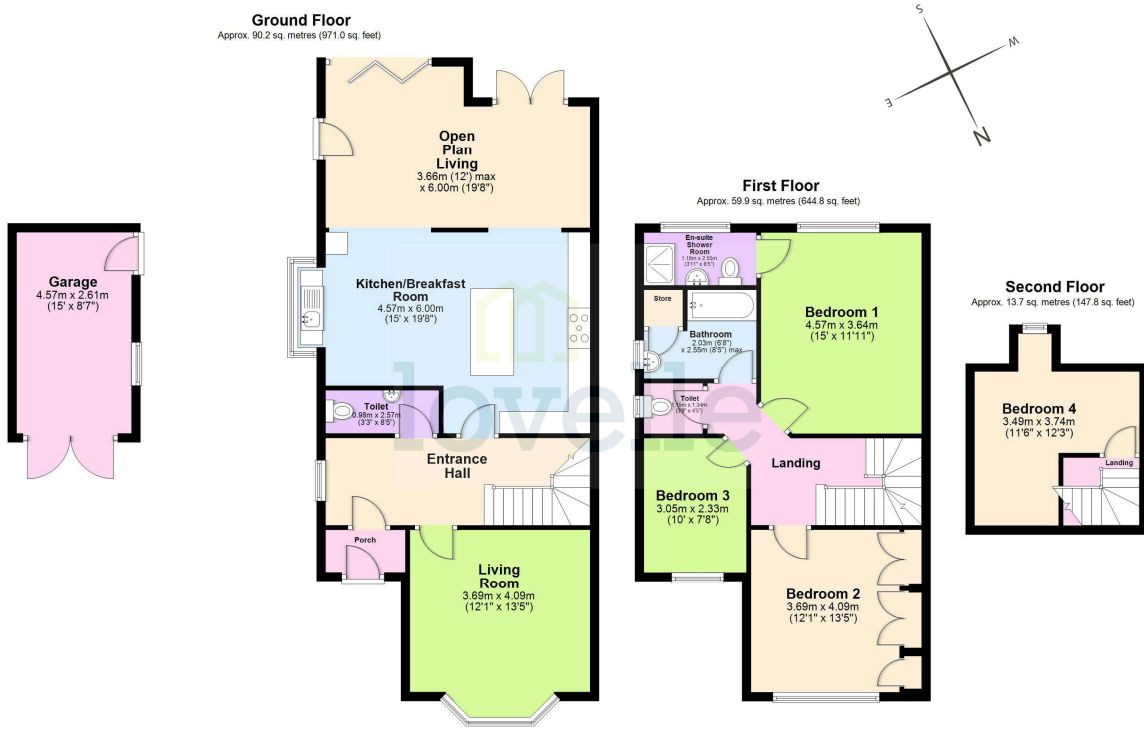
Mobile and broadband

It is advised that prospective purchasers visit checker.ofcom.org.uk in order to review available wifi speeds and mobile connectivity at the property.

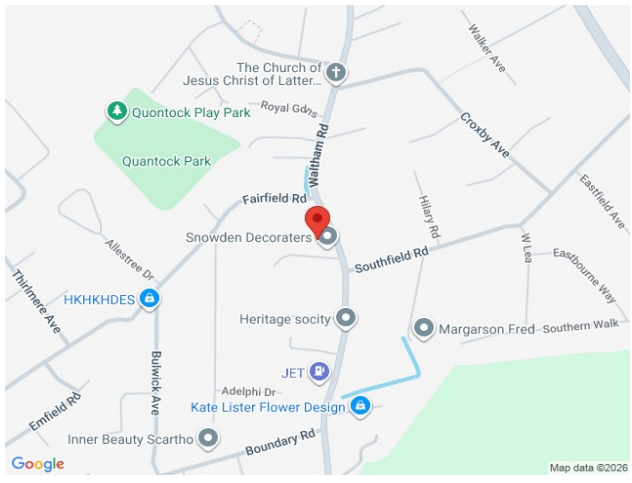








The provided floor plan is intended for general informational purposes only and may not accurately represent the exact dimensions, layout, or features of the property. The floor plan should not be relied upon for making decisions about purchasing, renting, or modifying the property. Actual measurements and features may vary. It is recommended that interested parties conduct a physical inspection of the property to verify the accuracy of the floor plan and obtain specific information about the property's condition, amenities, and any other relevant details.
Plan produced using PlanUp.



When it comes to **property** it must be **lovelle**

01472 251918
grimsby@lovelle.co.uk

The Property Ombudsman