



Barnet Crescent, Kirkcaldy
Offers over £94,995

Barnet Crescent, Kirkcaldy

SOLD AS SEEN

Spacious 3-Bed Semi-Detached Villa In Need Of Upgrading!

Allan England's award winning team at first for homes are proud to welcome to the market a 3 bedroom Semi-Detached Villa situated within a desirable area of Kirkcaldy. The property is in need of internal upgrading which has been reflected in the asking price. Accommodation comprises on the ground floor: entrance hall, family lounge/diner, kitchen and shower room. The upper level offers 3 bedrooms. Externally, there is a 2-car driveway to the front and side and generous rear garden grounds. Early viewing is essential to ensure you don't miss out!

HOME REPORT VALUE £100,000

EPC RATING D

COUNCIL TAX BAND C

Call first for homes - first for trust... first for service... first for aftercare!

SITUATION The popular coastal Town of Kirkcaldy has a wide range of services including shopping, banking, schools and a host of recreational facilities such as the stunning Beveridge Park and the Adam Smith Theatre. For the commuter Kirkcaldy boasts a mainline train station and the A92 road link giving access to Edinburgh and all major local towns.

INFORMATION These particulars are prepared on the basis of information provided by our clients. We have not tested the electrical system or appliances, nor where applicable, any central heating system. All sizes are recorded by electronic tape measurements to give an indicative, approximate size only. Prospective purchasers should make their own enquiries - no warranty is given or implied. This schedule is not intended to, and does not form any contract.





SITUATION - Kirkcaldy

ENTRANCE HALL

FAMILY LOUNGE / DINER

16'10" x 12'4" approx, (5.14m x 3.78m approx,)

KITCHEN 11'6" x 8'0" approx. (3.52m x 2.44m approx.)

SHOWER ROOM

UPPER LEVEL

BEDROOM 1

16'10" x 9'5" approx. (5.14m x 2.88m approx.)

BEDROOM 2

13'8" x 8'3" approx. (4.18m x 2.52m approx.)

BEDROOM 3

10'0" x 8'4" approx. (3.06m x 2.55m approx.)

2 CAR DRIVEWAY

GENEROUS REAR GARDEN

INFORMATION





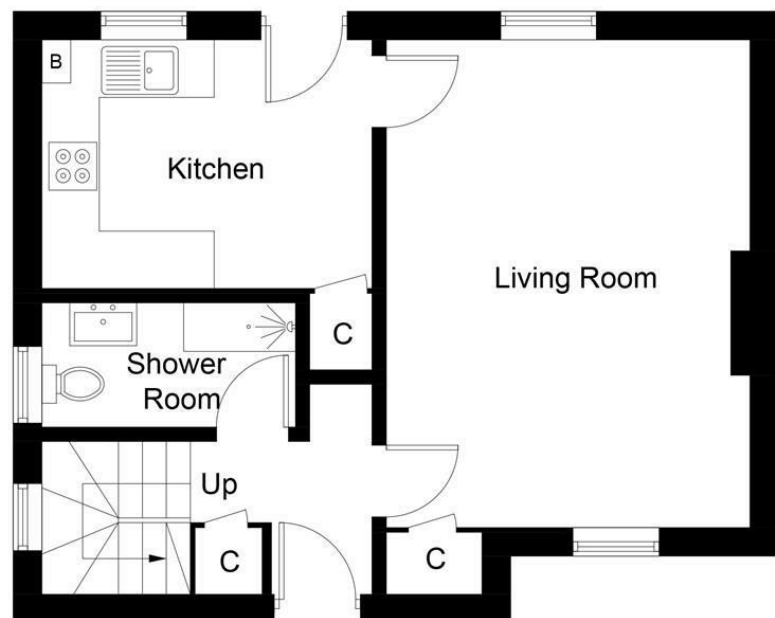
Information

These particulars are prepared on the basis of information provided by our clients. We have not tested the electrical system or any electrical appliances, nor where applicable, any central heating system. All sizes are recorded by electronic tape measurement to give an indicative, approximate size only. Prospective purchasers should make their own enquiries – no warranty is given or implied. This schedule is not intended to, and does not form any contract.

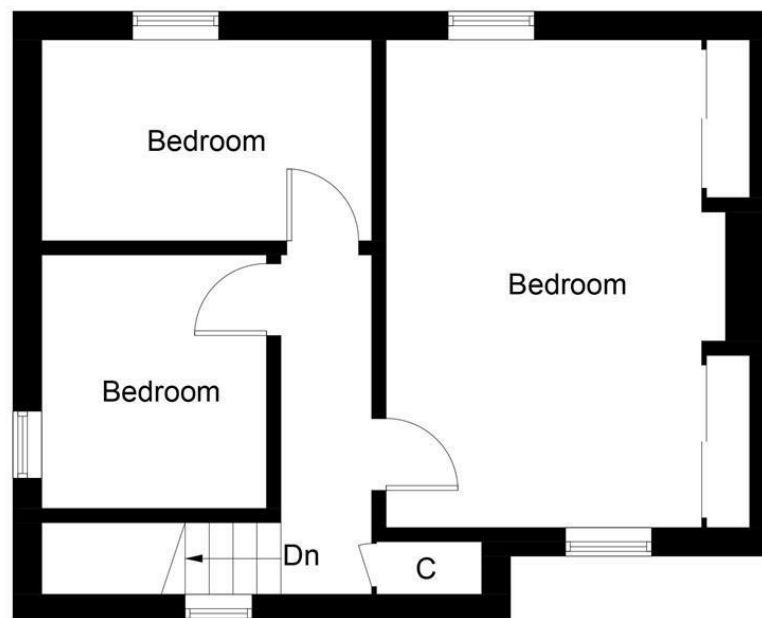
FREE Valuation

Selling Your Home?

Choose first for homes - a highly experienced estate agency team you can trust to sell your home at the highest possible price. Offering fantastic savings on selling fees, with no compromise on service, free professional photography highlighting your home in its best light, first for homes will be your first choice. Contact us today to arrange your appointment.



Ground Floor



First Floor

Illustration for identification purposes only, measurements are approximate, not to scale. Fourlabs.co © (ID1273155)

first for homes
first for property in life - firstforhomes.co.uk

Contact Allan England's Team
01592 752 944



first for trust



first for service



first for aftercare

32 North Street, Glenrothes, Fife KY7 5NA
Fax: 01592 807947
sales@firstforhomes.co.uk
www.firstforhomes.co.uk