



8 The Copse

Ashford, TN23 3LG

Price £225,000

Pleasantly appointed terraced home on the popular Godinton Park development, in easy reach of local schools and shops.

The property comprises an entrance porch, sitting/dining room, kitchen, two bedrooms and modern bathroom/WC. The property benefits from an easy to maintain garden to the rear double glazing and single garage.

NO ONWARD CHAIN

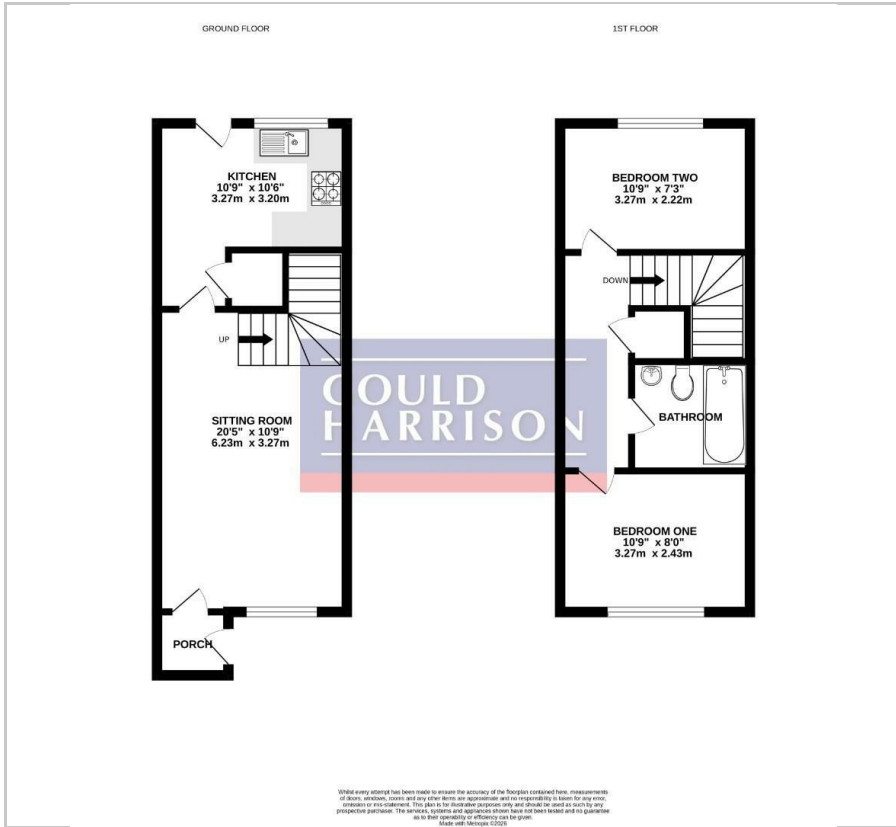
Viewing

Please contact our Ashford Office on 01233 646411 if you wish to arrange a viewing appointment for this property or require further information.

- TERRACED HOUSE
- TWO BEDROOMS
- MODERN KITCHEN & BATHROOM
- GARAGE IN ADJACENT BLOCK
- ENCLOSED REAR GARDEN
- DOUBLE GLAZING
- CLOSE TO LOCAL SCHOOLS AND AMENITIES
- CUL DE SAC POSITION
- NO ONWARD CHAIN



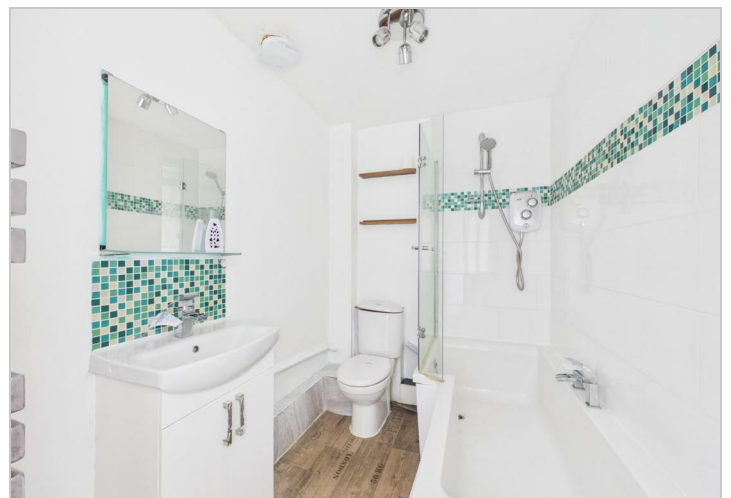
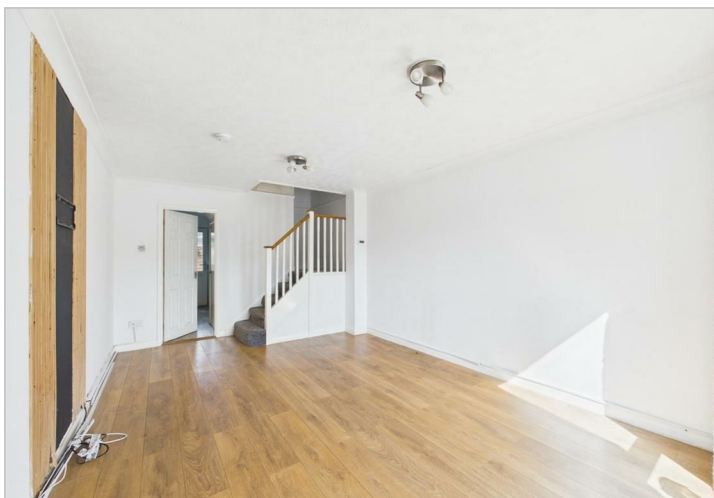
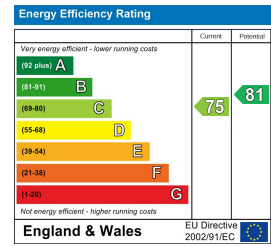
Floor Plan



Area Map



Energy Efficiency Graph



These particulars, whilst believed to be accurate are set out as a general outline only for guidance and do not constitute any part of an offer or contract. Intending purchasers should not rely on them as statements of representation of fact, but must satisfy themselves by inspection or otherwise as to their accuracy. No person in this firm's employment has the authority to make or give any representation or warranty in respect of the property.