



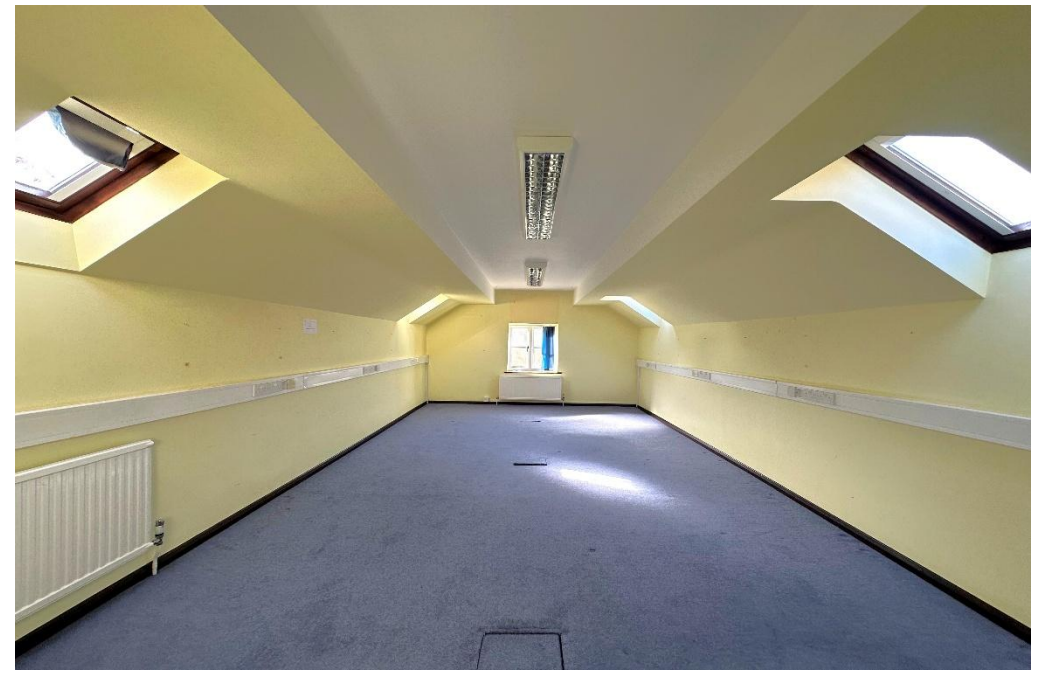
Middleton Farmhouse

Main Road, Middleton Cheney OX17 2QT



ROUND & JACKSON
ESTATE AGENTS





A substantial period farmhouse with a separate coach house and outbuildings, located on the edge of this highly sought after and well served village. While there is no scope for extension, the property offers significant potential for refurbishment and improvement, making it an attractive opportunity for developers and investors, as well as families looking to create a fantastic home. Recently reintroduced to the market at a substantially reduced and highly competitive price.

The property

Middleton Farmhouse is a handsome period property, pleasantly situated within this highly regarded and well served village. Grade II listed, the property retains a wealth of character features including exposed beams, flagstone flooring, stone walls and open fireplaces, creating a home of considerable charm and presence. The accommodation is both spacious and highly versatile, arranged over three floors with the added benefit of a substantial basement. Whilst the property would now benefit from a programme of modernisation, it offers an excellent opportunity to enhance and restore a fine period home, appealing to both developers and buyers seeking a bespoke family residence.

On the ground floor there is an entrance hallway, three reception rooms, a kitchen/breakfast room, utility room and two cloakrooms. The upper floors provide generous bedroom accommodation, with four double bedrooms on the first floor and a further three double bedrooms and a family bathroom on the second floor.

Externally, the property continues to impress. To the side are two useful store rooms, while a detached coach house extends to approximately 1,500 sq ft, offering excellent potential for conversion into ancillary accommodation or an annexe, subject to the necessary consents.

To the rear, there is a large, low maintenance courtyard garden finished with impressed concrete paving, providing a private and manageable outdoor space.

Overall, Middleton Farmhouse represents a rare opportunity to acquire a substantial period home with significant scope for refurbishment, offered at a revised and highly attractive price point.

Entrance Hallway

With stairs to the first floor and doors to the sitting room and kitchen/breakfast room.

Kitchen/Breakfast Room

A spacious room fitted with a range of eye level cabinets and base units and drawers with work surfaces over. Inset twin bowl sink and draining board, four ring hob, two ovens, dishwasher and space for a table and chairs.

Sitting Room

A spacious room with an inglenook fireplace, a beamed ceiling and exposed stonework.

Study

Ideal home office or TV room with a window to the side.

Dining Room

A dual aspect reception room with an inglenook fireplace and wood burning stove.

Utility and Cloakrooms

Useful utility space with access to two cloakrooms and a door to the rear.

First Floor

The first-floor landing gives access to four double bedrooms and has a staircase giving to the second floor.

Second Floor

Spacious landing giving access to the bathroom and three large double bedrooms.

Stores

Two story storerooms located to the side of the property which could be converted into additional accommodation.

Coach House

Two story detached coach house proving 1500 sq ft of accommodation which could convert into an annexe subject to relevant permissions.



Outside

To the front of the property there is a pretty lawned garden which is pleasantly landscaped. To the rear of the property there is a large courtyard garden where car parking is available.

Situation

Middleton Cheney is one of the larger villages in the area and is by-passed by the A422 Banbury to Brackley Road. The village is highly sought after with many facilities which include, chemist, library, bus service, village store, newsagents, post office, and a choice of public houses. The village also provides both primary and secondary schooling. More comprehensive facilities can be found in the nearby market town of Banbury including the Castle Quay Shopping Centre, and the Spiceball Leisure Centre. There is access to the M40 at Jct 11, and a mainline railway station provides a service to London Marylebone.

Directions

Directions - From Banbury proceed in an easterly direction toward Brackley (A422). Once you have crossed the motorway roundabout follow the dual carriageway for half a mile and on reaching the next roundabout take the third exit towards Farthinghoe and Brackley. Continue for approximately one mile and turn left into the village where the property will be found on your left-hand side.

Services

All mains' services connected.

Local Authority

Cherwell District Council. Tax band TBC.

Tenure

A freehold property.



Agents Note

Planning and Listed Building Permission was granted in April 2024 for the change of use to a five bed dwelling with home office and associated outbuildings. The stable block is identified on the planning application as being a workshop, annexe and storage associated with the main dwelling. The application shows off street parking for three cars at the front, with the courtyard converted into a lawn and garden. Planning Reference 2023/8038/FULL.

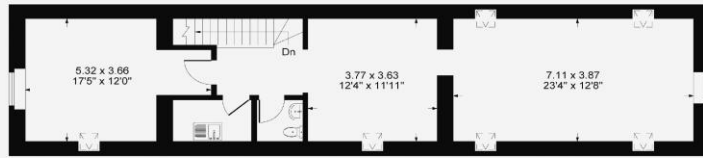
The stable block already has permission, granted in June 2022 but not implemented, to alter the building, by way of installing a minimal amount of internal walls and a new staircase, into two units for holiday accommodation. Planning Reference WNS/2022/0664/FUL.

Viewing Arrangements

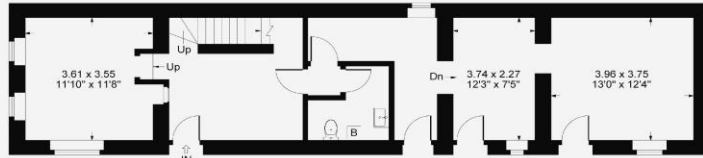
By prior arrangement with Round & Jackson or our joint agent Wild Property Consultancy 01295 983333.

Guide Price £550,000

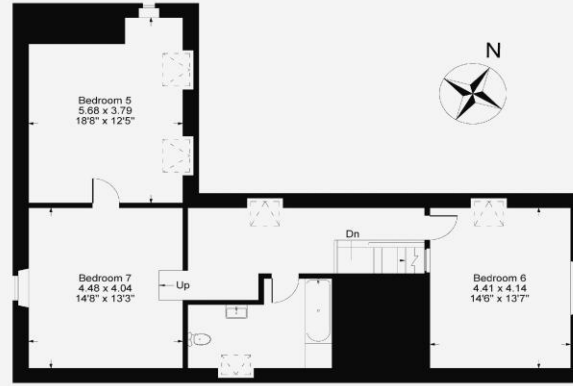




Coach House First Floor



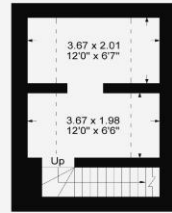
Coach House Ground Floor



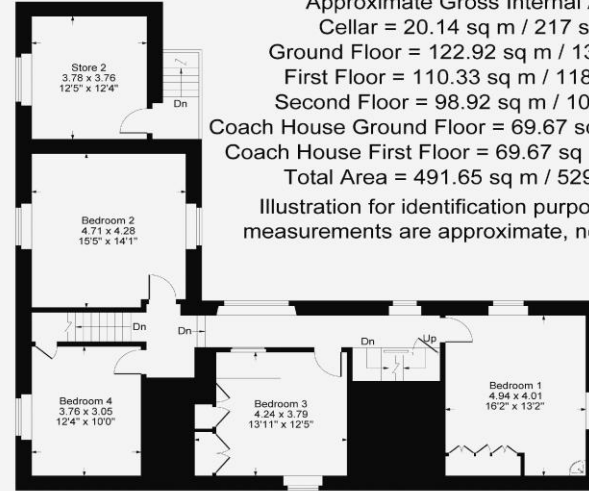
Second Floor



Ground Floor



Cellar



First Floor

Approximate Gross Internal Area
 Cellar = 20.14 sq m / 217 sq ft
 Ground Floor = 122.92 sq m / 1323 sq ft
 First Floor = 110.33 sq m / 1188 sq ft
 Second Floor = 98.92 sq m / 1065 sq ft
 Coach House Ground Floor = 69.67 sq m / 750 sq ft
 Coach House First Floor = 69.67 sq m / 750 sq ft
 Total Area = 491.65 sq m / 5293 sq ft
 Illustration for identification purposes only,
 measurements are approximate, not to scale.



IMPORTANT NOTE TO PURCHASERS: We endeavour to make our sales particulars accurate and reliable, however, they do not constitute or form part of an offer or any contract and none is to be relied upon as statements of representation or fact. The services, systems and appliances listed in this specification have not been tested by us and no guarantee as to their operating ability or efficiency is given. All measurements have been taken as guide to prospective buyers only, and are not precise. If you require clarification or further information on any points, please contact us, especially if you are travelling some distance to view.

Banbury - The Office, Oxford Road, Banbury, Oxon, OX16 9XA

T: 01295 279953 E: office@roundandjackson.co.uk

Bloxham - High Street, Bloxham, Oxon, OX15 4LU

T: 01295 720683 E: office@roundandjackson.co.uk

www.roundandjackson.co.uk

Property Misdescriptions Act 1991: The Agents have not tested any apparatus, equipment, fixtures and fittings, or services, so cannot verify that they are in working order or fit for the purpose. The buyer is advised to obtain verification from his or her professional buyer. References to the Tenure of the property are based on information supplied by the Vendor. The agents have not had sight of the title documents. The buyer is advised to obtain verification from their solicitor. You are advised to check the availability of any property before travelling any distance to view.



ROUND & JACKSON
ESTATE AGENTS