



Motcomb Street  
Knightsbridge, SW1X

CHESTERTONS





. A bright flat on the 2nd and 3rd floor of this Georgian conversion on this charming, cobbled street with shops and cafes ideally located for Knightsbridge & Hyde Park.

Arranged over 1,355 square feet the accommodation includes a large reception, separate fully fitted kitchen, two double bedrooms and two modern bathrooms.

- Two double bedrooms
- Two bathrooms
- Split level
- 2nd & 3rd floors
- 1355 sq ft
- Desirable location

**£6,153.33 pcm**

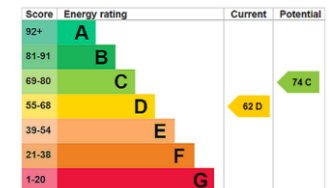
Additional tenant charges apply (fees apply to non-AST tenancies only)

Tenancy Agreement Fee: £300

References per Tenant/Guarantor: £60

Inventory check (approx. £100 – £250 inc. VAT)

[chestertons.co.uk/property-to-rent/applicable-fees](http://chestertons.co.uk/property-to-rent/applicable-fees)



**Minimum Term:** 12 months  
**Deposit Required:** 6 weeks  
**Local Authority:** City Of Westminster  
**Council Tax Band:** H  
**EPC Rating:** D  
**Unfurnished**

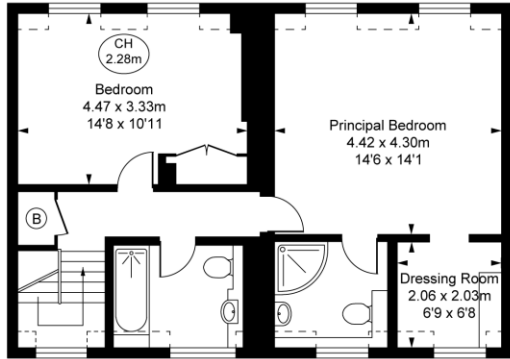
*Chestertons Knightsbridge & Belgravia Lettings*

31 Lowndes Street  
 London  
 SW1X 9HX

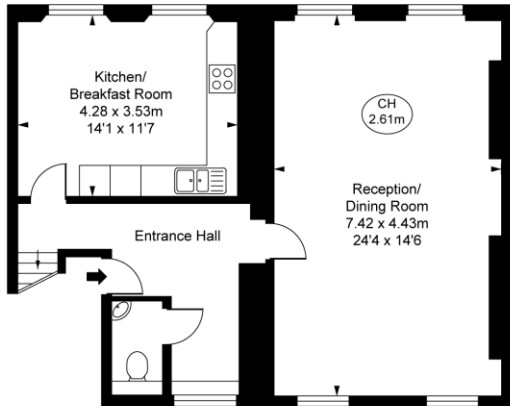
[knightsbridgelettingsusers@chestertons.co.uk](mailto:knightsbridgelettingsusers@chestertons.co.uk)  
 02072353530  
[chestertons.co.uk](http://chestertons.co.uk)

Motcomb Street, SW1X  
 Approximate Gross Internal Area  
 125.87 sq m / 1,355 sq ft

(Including restricted height  
 under 1.5m ( = = = = = ))  
 (CH = Ceiling Heights)



Third Floor  
 Approximate Gross Internal Area  
 61.32 sq m / 660 sq ft



Second Floor  
 Approximate Gross Internal Area  
 64.55 sq m / 695 sq ft

This plan is not to scale. It is for guidance and not for valuation purposes.  
 All measurements and areas are approximate only, and have been prepared in accordance with the current edition of theRICS Code of Measuring Practice.  
 © Fulham Performance

Chesterton UK Services Limited trading as Chestertons for themselves and for the vendor of this property whose agents they are, give notice that (i) these particulars do not constitute any part of an offer or contract, (ii) all statements contained within these particulars are made without responsibility on the part of Chestertons or the vendor, (iii) whilst made in good faith, none of the statements contained within these particulars are to be relied upon as a statement or representation of fact, (iv) any intending purchasers must satisfy themselves by inspection or otherwise as to the correctness of each of the statements contained within these particulars, (v) the vendor does not make or give either Chestertons or any person in their employment any authority to make or give representation or warranty whatsoever in relation to this property. Wide angle lenses may be used. ©Copyright Chestertons | Chesterton Global Ltd | Registered Office 5th Floor, The Lantern, 75 Hampstead Road, London, NW1 2PL Registered Company Number 05334580.



This paper is  
 100% recyclable