



Brockley Road, SE4

£2,100 Per calendar month

A collection of one, two and three bedroom apartments in this brand new development above an old converted bank. This particular flat comprises an open plan kitchen/ reception, two double bedrooms and a modern bathroom with walk-in shower. ***The photos shown are for guidance only.

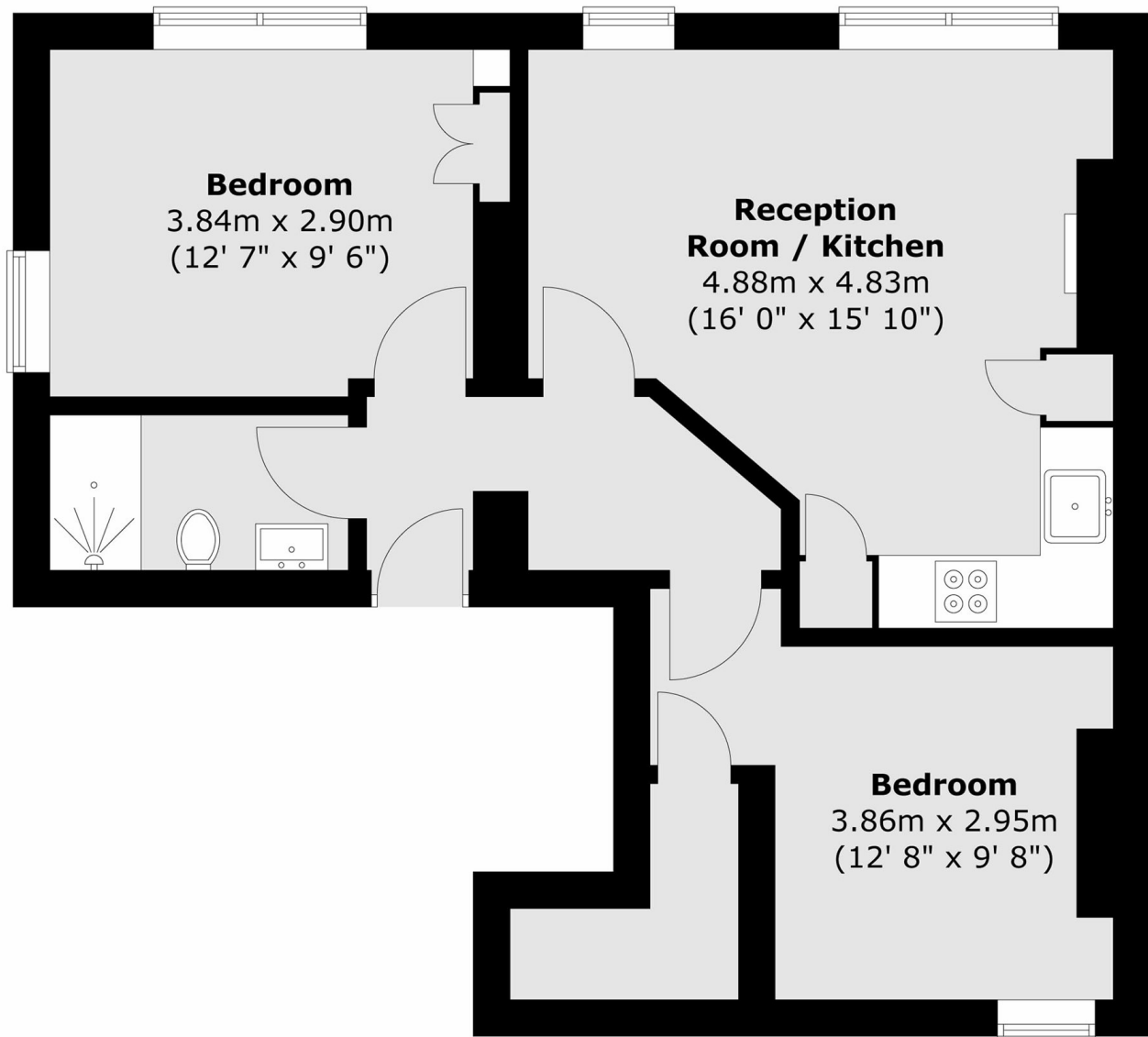
Conveniently located for Crofton Park, Brockley and Ladywell train stations and the open spaces of Blythe Hill, Hilly Fields and Brockwell. The great independent cafés and shops of Crofton Park are located on your door step.

Features

- Brand New Development
- First Floor Flat
- Large Open Plan Kitchen/ Reception
- Two Double Bedrooms
- Modern Bathroom

Brockley Road,
London, SE4

First Floor



Total area (approx.) : 53.4 sq. m (575 sq. ft)

Dexters

Lewisham
228 Algernon Road
London
SE13 7AG
Lettings
0208 690 8020

Energy Rating: C. We aim to make our particulars both accurate and reliable. However they are not guaranteed; nor do they form part of an offer or contract. If you require clarification on any points then please contact us, especially if you're traveling some distance to view. Please note that appliances and heating systems have not been tested and therefore no warranties can be given as to their good working order.

 **RICS** | Regulated
Estate Agent
and Letting Agent

[dexters.co.uk](https://www.dexters.co.uk)