



hrt
herbert r thomas

The Keep, Llandough
Cowbridge

£895,000

The Keep

Llandough, Cowbridge

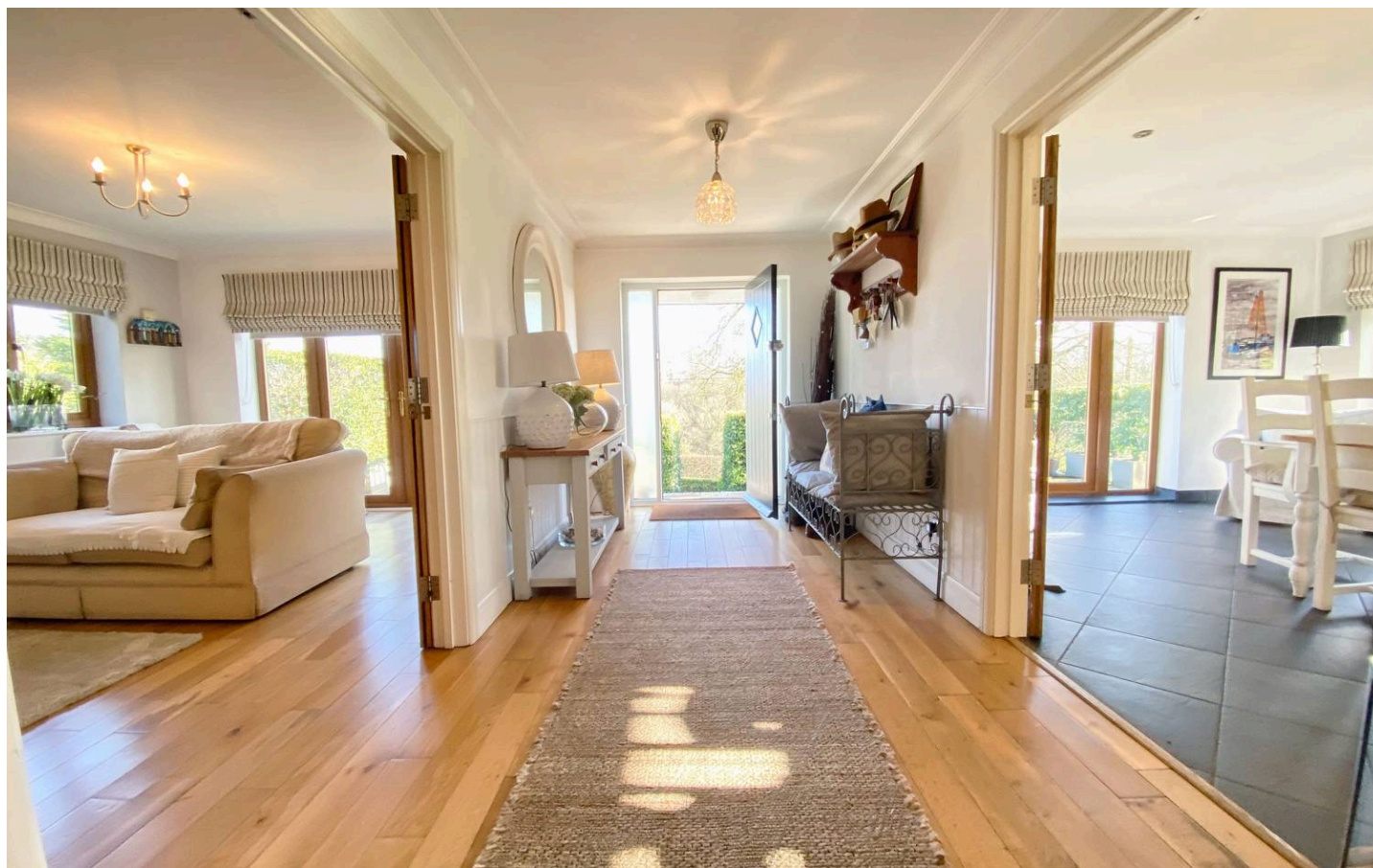
Substantial five bedroom detached home near Cowbridge, with three en suites, attic rooms, open plan kitchen, 3 additional reception rooms, gardens, terraces, parking and stunning rural views.
Council Tax band: G

Tenure: Freehold

EPC Energy Efficiency Rating:

EPC Environmental Impact Rating:

- Substantial five double bedroom detached family home
- Glorious rural setting with far-reaching valley views
- Located just south of the highly regarded market town of Cowbridge
- Impressive open-plan kitchen/dining room with Shaker-style units and integrated appliances
- Three en-suite bedrooms, 2 further bedrooms plus a stylish family bathroom
- Spacious lounge/dining room with feature fireplace and garden access
- Separate family room and study, ideal for modern family living and home working
- Two versatile second-floor attic rooms providing additional accommodation
- Attractive front terrace and landscaped rear garden with pergola and summer house
- Gravelled parking area accessed via private sloped driveway



Substantial five double bedroom detached family home set in a glorious rural position, a short distance south of the highly regarded market town of **Cowbridge**.

A timber front door opens into a welcoming **HALLWAY** with oak flooring, coved ceiling and pendant lighting. Double doors lead to the **family room**, featuring a gas fire with rustic timber surround, a side window and French doors opening onto a flagstoned front terrace.

The **CENTRAL HALLWAY** continues with matching oak flooring, a half-turn oak staircase with under-stairs storage, deep walk-in cupboard and a **cloakroom** with modern white suite, tiled floor and panelled lower walls.

The generous **LOUNGE/DINING ROOM** enjoys French doors with side panels opening onto the rear garden and features a brick-lined fireplace with flagstone hearth and timber lintel. A door leads to a **study** with oak flooring and windows to the side and rear.

From the **FRONT HALLWAY**, double doors open into an impressive **OPEN PLAN KITCHEN/DINING ROOM**. The kitchen is fitted with an extensive range of Shaker-style units, black granite worktops, inset sink and a matching island. Integrated Bosch appliances include a double oven, gas hob, extractor, dishwasher, fridge and freezer. The dining area benefits from slate-effect tiling, a recessed contemporary wood-burning fire, side window and sitting area with French doors opening onto the front terrace. A door leads to the **utility room**, fitted with additional storage, stainless steel sink, Worcester LPG boiler and stable door to the side.

The **GALLERIED FIRST FLOOR LANDING** features a vaulted ceiling, second-floor gallery over and extensive built-in storage.

The **PRINCIPAL BEDROOM** enjoys fitted wardrobes, French doors with a Juliet balcony and delightful views across the valley, together with a stylish **EN-SUITE SHOWER ROOM**.

BEDROOM TWO also benefits from a Juliet balcony and its own **EN-SUITE SHOWER ROOM**.

BEDROOM THREE has a pitched ceiling with Velux window and **EN-SUITE SHOWER ROOM**.

BEDROOM FOUR is a generous double room with French doors and Juliet balcony overlooking the rear garden and fields beyond.

BEDROOM FIVE features a part-pitched ceiling and French doors with rural rear views.

The **FAMILY BATHROOM** comprises a white suite including a freestanding bath, wash hand basin on timber stand and low-level WC, complemented by a Velux window.

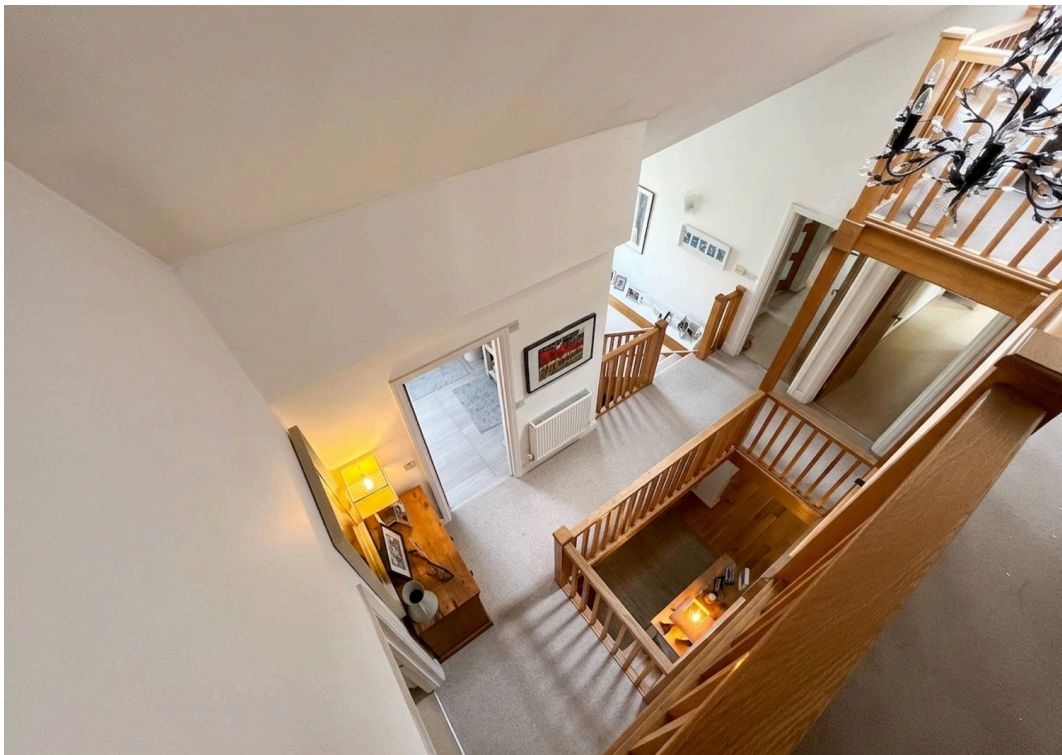
A staircase rises to the **second floor**, providing access to two versatile **attic rooms**, both with pitched ceilings, boarded floors and windows, suitable for a variety of uses.

Outside, *The Keep* is approached via a side driveway (with formal rights of access) leading to a gravelled parking area. To the front is a wide flagstone terrace with steps down to a lawn enclosed by shaped hedging and enjoying far-reaching valley views.

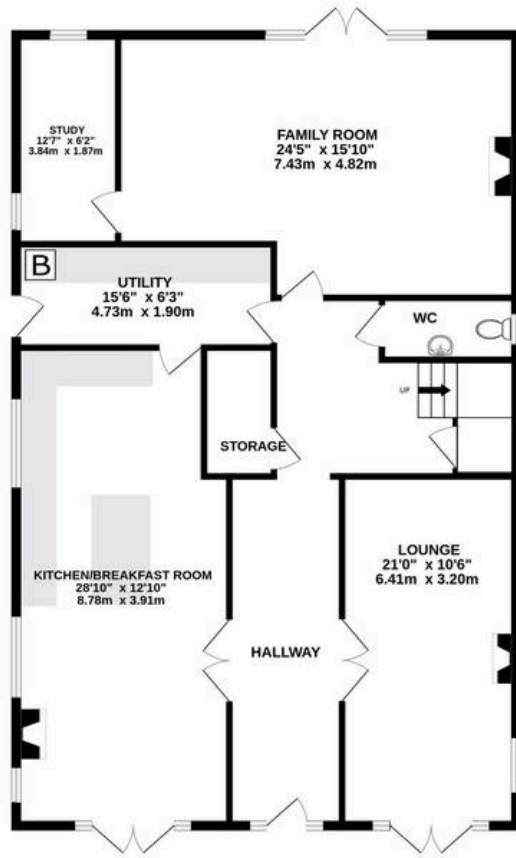
The **REAR GARDEN** offers a paved sitting area leading up to a lawn with raised beds, stone seating area, pergola and a timber-framed **summer house**.



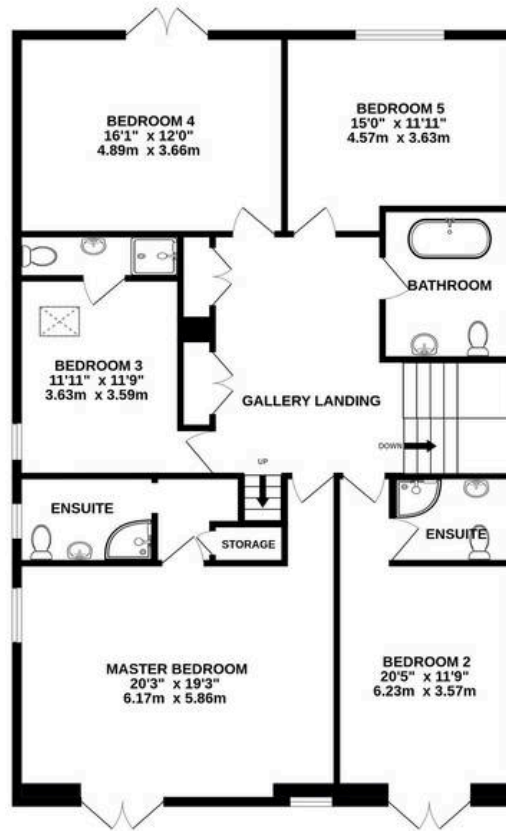
hrt
herbert r thomas



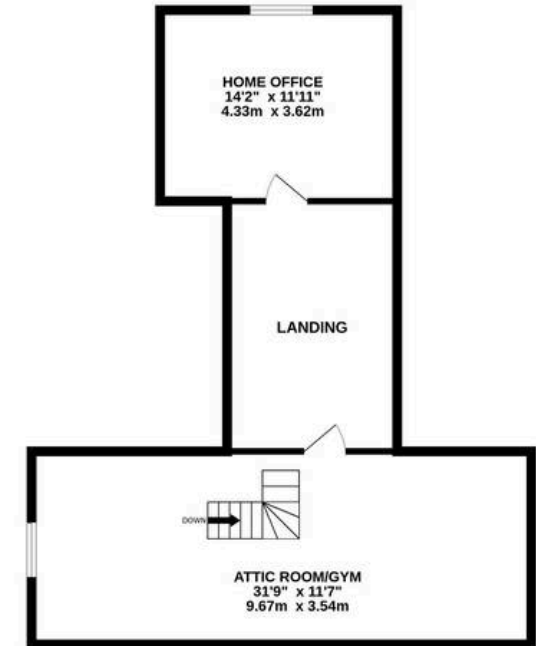
GROUND FLOOR
1420 sq.ft. (131.9 sq.m.) approx.



1ST FLOOR
1378 sq.ft. (128.0 sq.m.) approx.



2ND FLOOR
668 sq.ft. (62.1 sq.m.) approx.



TOTAL FLOOR AREA : 3466 sq.ft. (322.0 sq.m.) approx.

Whilst every attempt has been made to ensure the accuracy of the floorplan contained here, measurements of doors, windows, rooms and any other items are approximate and no responsibility is taken for any error, omission or mis-statement. This plan is for illustrative purposes only and should be used as such by any prospective purchaser. The services, systems and appliances shown have not been tested and no guarantee as to their operability or efficiency can be given.
Made with Metropix ©2026







Herbert R Thomas

Herbert R Thomas, 59 High Street - CF71 7YL

01446772911 • cowbridge@hrt.uk.com • www.hrt.uk.com/



These particulars are provided as a general guide only and do not form part of any contract offer. While believed to be accurate, they are not guaranteed. Some images may include CGI or digitally enhanced furnishings for illustrative purposes only and are not included in the sale. All negotiations must be conducted through Herbert R Thomas.