



BRIXTON ROAD, SW9

£2,500 per month

Two bedrooms
One bathroom
Open plan
Gated development
Communal gardens
Victorian conversion

@marshandparsons
marshandparsons.co.uk

MARSH &
PARSONS



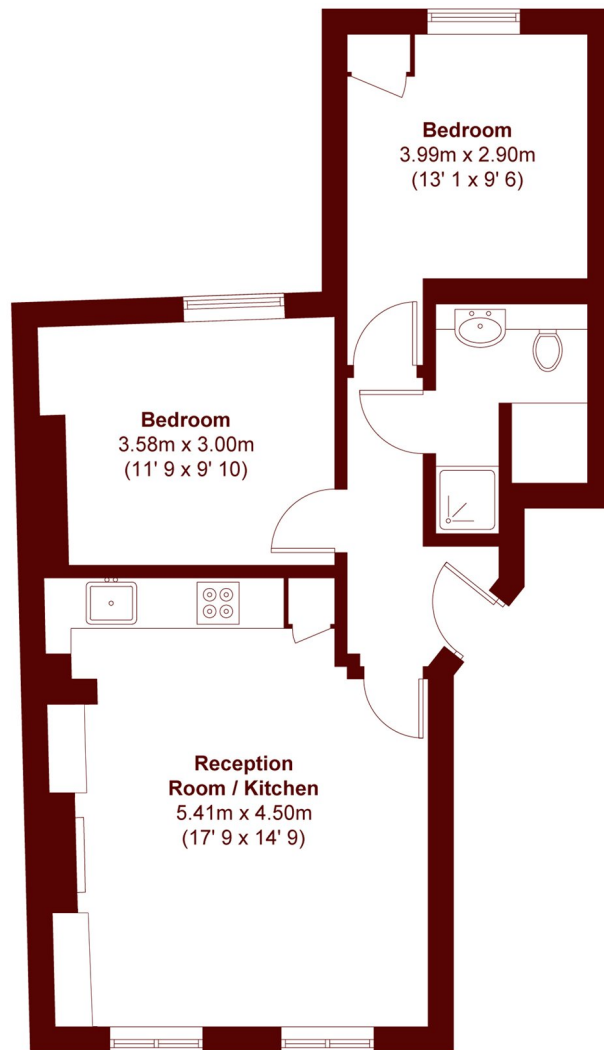
ABOUT THE PROPERTY

A well-presented two double bedroom flat set within a secure development on Brixton Road. The property offers a bright, open plan reception and kitchen diner, with the added benefit of access to communal gardens. The flat is set behind a secure gated entrance and represents an excellent opportunity for professional sharers or couples looking to enjoy everything this vibrant part of South London has to offer.

Brixton Road places you right at the heart of one of London's most energetic and characterful neighbourhoods. The iconic Brixton Village, POP Brixton, Windrush Square and The Ritzy Cinema are all just moments away.



STEP INSIDE BRIXTON ROAD



APPROX. GROSS INTERNAL FLOOR AREA
586 SQFT / 54.5 SQM

Kennington
020 7932 2920

Energy Rating: C We aim to make our particulars both accurate and reliable. However, they are not guaranteed; nor do they form part of an offer or contract. If you require clarification on any points then please contact us, especially if you're traveling some distance to view. Please note that appliances and heating systems have not been tested and therefore no warranties can be given as to their good working order

**MARSH &
PARSONS**