




LANG TOWN
& COUNTRY
SALES

19 Second Avenue, Billacombe, Plymouth, Devon, PL9 8AW


LANG TOWN
& COUNTRY
SALES

Price £265,000



Situated in a popular and well-established residential area of Plymstock, this three-bedroom semi-detached family home is offered to the market with vacant possession and no onward chain, presenting an excellent opportunity for buyers looking to modernise and create a home tailored to their own tastes and requirements.

Occupying a particularly generous plot, the property benefits from sizeable front and rear gardens, providing ample outdoor space for families, keen gardeners, or those looking to extend subject to the necessary consents. In addition, there is a detached garage and private driveway offering off-road parking.

The accommodation is spacious and well-proportioned throughout. The ground floor comprises a large reception room which offers excellent potential to be subdivided into separate living and dining areas if desired, a kitchen/dining room, and a useful ground floor WC. On the first floor are three well-sized bedrooms together with a family bathroom fitted with a three-piece suite.

While the property would benefit from a programme of modernisation, it offers tremendous scope for improvement and represents an exciting opportunity to add value in a highly sought-after location.

Second Avenue is ideally positioned within easy reach of a wide range of local amenities. Nearby Plymstock & The Broadway offers an excellent selection of shops, supermarkets, cafés, restaurants and everyday services, while well-regarded primary and secondary schools are located within close proximity. Excellent transport links provide convenient access to Plymouth City Centre, and the beautiful South Hams coastline, including Wembury and Jennycliff, is only a short drive away, making this an ideal location for families and outdoor enthusiasts alike.

An early viewing is highly recommended to appreciate the potential, plot size and convenient location this property has to offer.

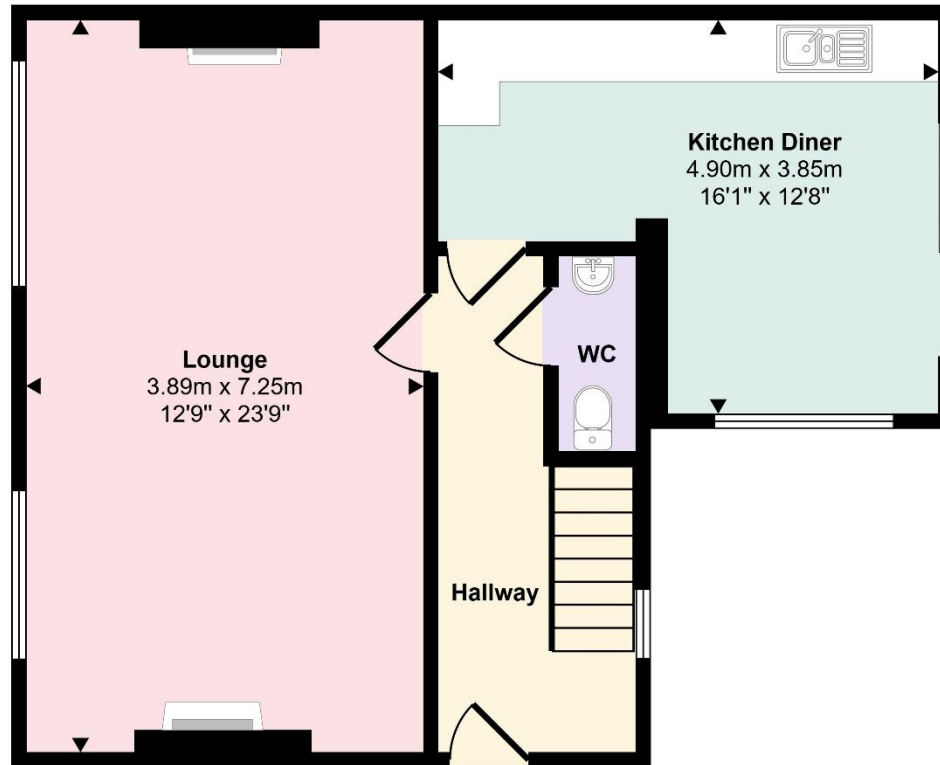


To view this property call Lang Town & Country Estate Agents on **01752 456000**

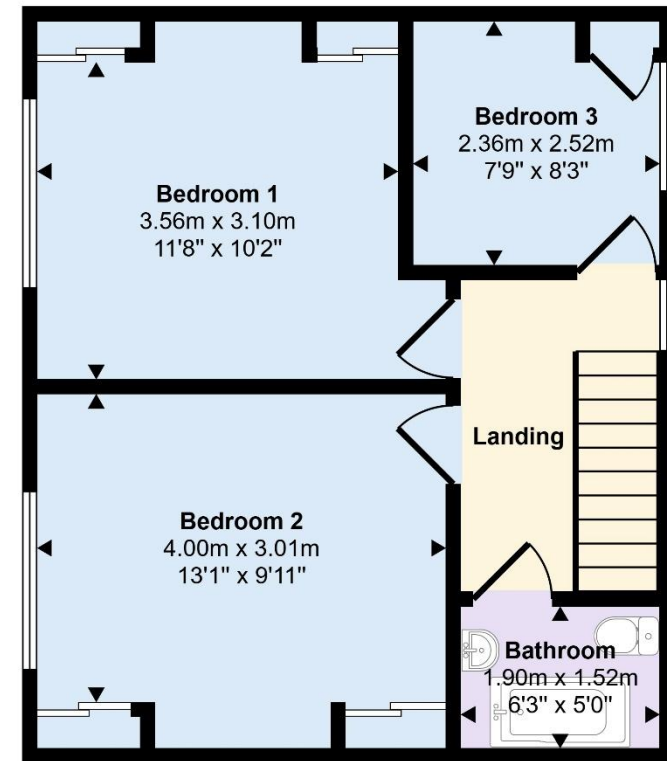
www.langtownandcountry.com



Approx Gross Internal Area
98 sq m / 1055 sq ft



Ground Floor
Approx 55 sq m / 587 sq ft



First Floor
Approx 43 sq m / 468 sq ft

This floorplan is only for illustrative purposes and is not to scale. Measurements of rooms, doors, windows, and any items are approximate and no responsibility is taken for any error, omission or mis-statement. Icons of items such as bathroom suites are representations only and may not look like the real items. Made with Made Snappy 360.

Lang Town & Country
6 The Broadway
Plymouth
PL9 7AU
Tel: 01752 456000
Email: plymstock@langtownandcountry.com
www.langtownandcountry.com

Lang Town & Country endeavour to ensure the accuracy of property details produced and displayed, we have not tested any apparatus, equipment, fixtures, fittings or services and so cannot verify that they are connected, in working order or fit for purpose. A buyer must check the availability of any property and make an appointment to view before embarking on any journey to see a property.

