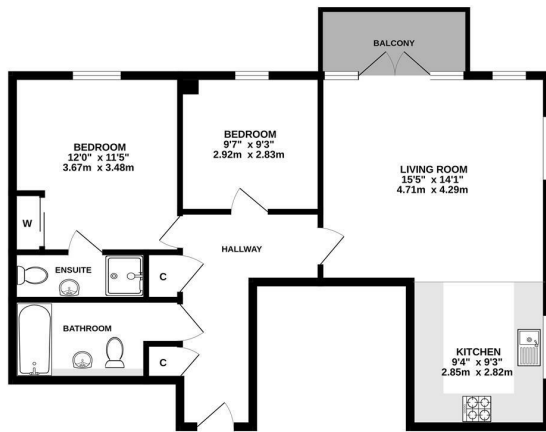




**Keith  
Ashton**

Milan Walk,  
Brentwood

FIRST FLOOR  
729 sq.ft. (67.7 sq.m.) approx.



TOTAL FLOOR AREA: 729 sq.ft. (67.7 sq.m.) approx.  
Measurements are approximate. Not to scale. Illustrative purposes only.  
Made with NetScout 2022



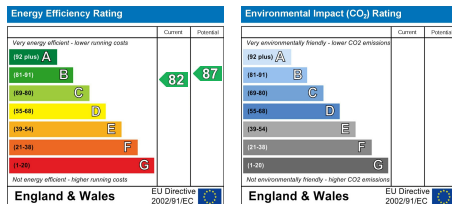
## 14 Henry Manning House Milan Walk, Brentwood, CM14 4JQ

We are delighted to present this beautifully maintained first-floor apartment, offering far-reaching views across the surrounding countryside. Ideally located less than a mile from Brentwood High Street, the property enjoys close proximity to a wide range of shops, bars, and restaurants - while still providing a peaceful retreat.

The bright and spacious living room benefits from dual-aspect windows and French doors that open onto a private balcony overlooking a tranquil greensward. The well-equipped kitchen complements the generous living space, while two well-proportioned bedrooms, including a principal with en-suite shower room, and a modern family bathroom complete the accommodation.

Additional features include an allocated parking space and a sought-after location just one mile from Brentwood Train Station, providing excellent transport links into London and beyond—making this an ideal choice for commuters or anyone seeking the best of town and country living.

Offers In Excess Of £350,000



### SERVICES:

Local Authority: Brentwood  
Council tax band: D  
Post code: CM14 4JQ

### VIEWING:

Strictly by prior arrangement with Keith Ashton Estate Agents

### OPENING HOURS:

Monday to Friday: 8.45AM - 6.30PM | Saturdays: 9AM - 5.30PM | Sundays: 10AM - 2PM

### MORTGAGE INFORMATION:

We offer the additional facility of an in-house Independent Financial Adviser who will access all mortgage lenders with the purpose of providing you with the benefit of choice. For quotations or comparables please call 01277 260858 or visit our interactive website at [www.mortgagebusiness.net](http://www.mortgagebusiness.net)



We the Agent have not tested any apparatus, fittings or services for this property. The plot size is intended merely as a guide and has not been officially measured or verified by the Agent. Photographs are for illustration only and may depict items which are not for sale or included in the sale of the property. As part of the service we offer we may recommend ancillary services to you which we believe may help you with your property transaction. We wish to make you aware, that should you decide to use these services we will receive a referral fee. For full and detailed information please visit 'terms and conditions' on our website [www.keithashton.co.uk](http://www.keithashton.co.uk)

Brentwood  
Tel. 01277 260858

Village Office  
Tel. 01277 375757

Lettings Office  
Tel. 01277 202200

Explore more @ [www.keithashton.co.uk](http://www.keithashton.co.uk)

