

OVER 60?

Secure this property
for up to **59% less!**



Guide Price

£500,000

Freehold

4x  2x  2x 

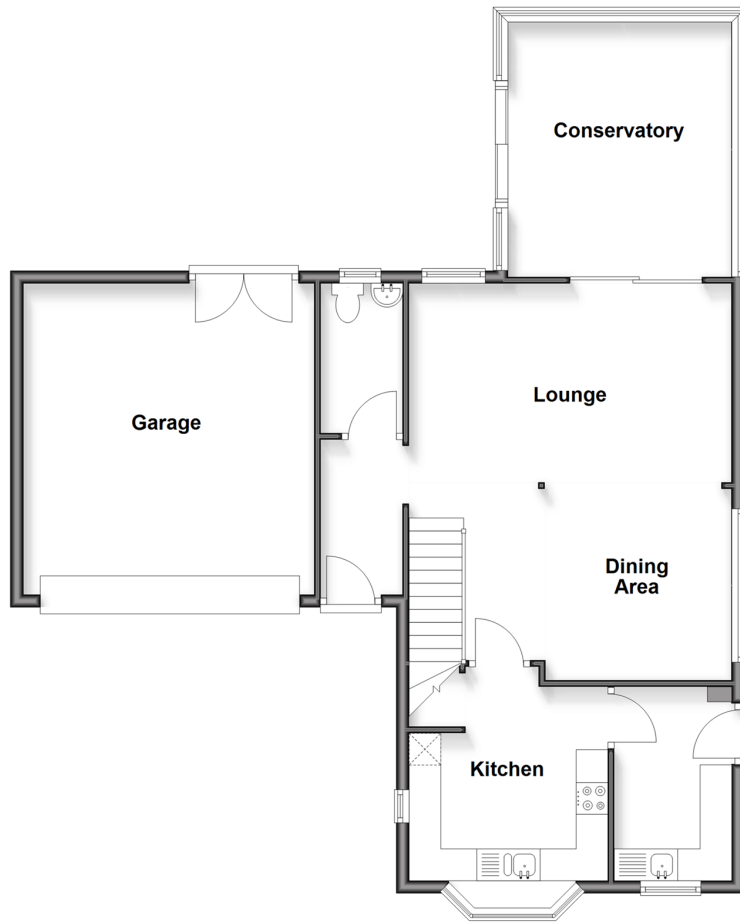
Sandstone Rise, Walderslade, Chatham,

Kent, ME5

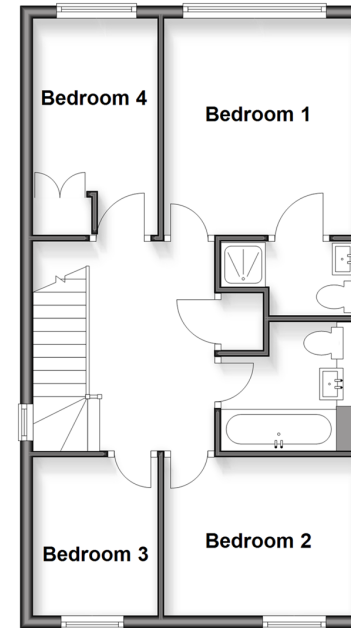
Wards

Helping you move forwards

Ground Floor
Approx. 92.9 sq. metres (1000.3 sq. feet)



First Floor
Approx. 48.3 sq. metres (520.2 sq. feet)



Accommodation

GROUND FLOOR

Entrance Hall

Cloakroom : 7'8 x 4'3 (2.34m x 1.30m)

Lounge/Dining Area : 17'0 x 10'4 (5.19m x 3.15m)
narrowing to 16'8 x 10'0 (5.08m x 3.05m)

Conservatory : 13'7 x 11'7 (4.14m x 3.53m)

Kitchen : 11'1 x 10'4 (3.38m x 3.15m)

Utility Room : 10'0 x 6'6 (3.05m x 1.98m)

Landing

Bedroom 1 : 13'0 x 10'0 (3.97m x 3.05m)

En Suite Shower Room: 6'5 x 4'2 (1.96m x 1.27m)

Bedroom 2 : 13'6 x 6'2 (4.12m x 1.88m)

Bedroom 3 : 10'2 x 8'1 (3.10m x 2.47m)

Bedroom 4 : 8'2 x 6'2 (2.49m x 1.88m)

Family Bathroom : 6'6 x 6'5 (1.98m x 1.96m)

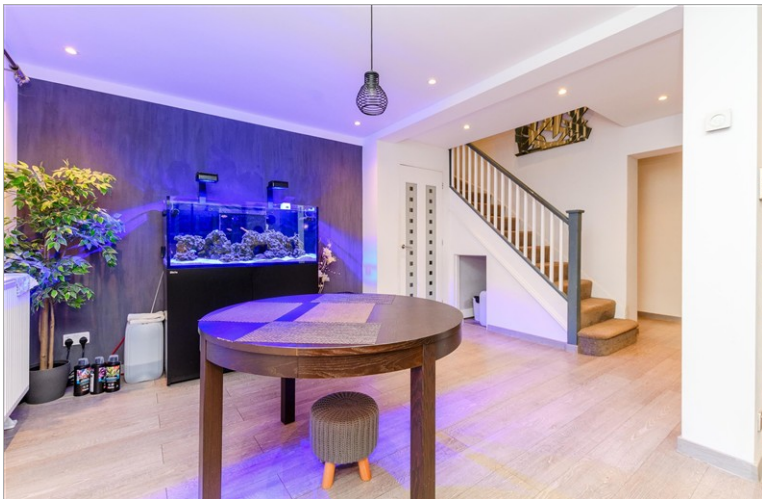
Driveway

Double Garage

Rear Garden

FIRST FLOOR

OUTSIDE



Main features

- Spacious detached property in Walderslade Woods
- En-suite to main bedroom plus family bathroom
- Utility room and conservatory for added convenience and space
- Driveway and double garage providing off-road parking and storage
- Excellent location near M2 and M20 motorway links



Nearest Schools

Primary Schools: Swingate Primary 0.4 miles, Tunbury Primary 0.8 miles, Lordswood Junior School 0.9 miles

Secondary Schools: Greenacre School 1.6 miles, Walderslade Girls' School 1.8 miles, Bradfields School 2.0 miles



Transport Information

Train Stations: Maidstone East 3.5 miles, Maidstone Barracks 3.6 miles, Aylesford 3.7 miles



Address

Sandstone Rise, Walderslade, Chatham, Kent, ME5



Directions

For directions to this property please contact us.



Wards
Helping you move forwards

Call Walderslade Branch 01634 865661 ■ wardsofkennt.co.uk



- Legal advice should be taken to verify fixtures/fittings, planning, alterations and/or lease details
- Appliances & services are untested, dimensions are approximate and floor plans are not to scale
- Through a Homewise Home For Life Plan people aged 60+ can secure this property for up to 59% less, by purchasing a Lifetime Lease

EPC RATING

CURRENT:	POTENTIAL:
C(69)	B(36)

12144694/20260217/ML/ALH