



Guide Price

£775,000

Freehold

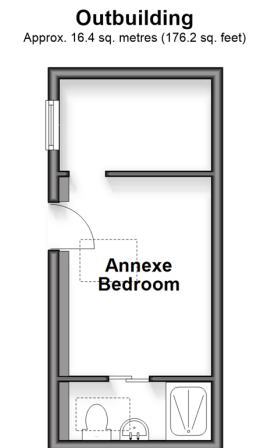
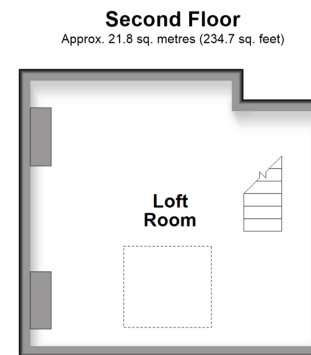
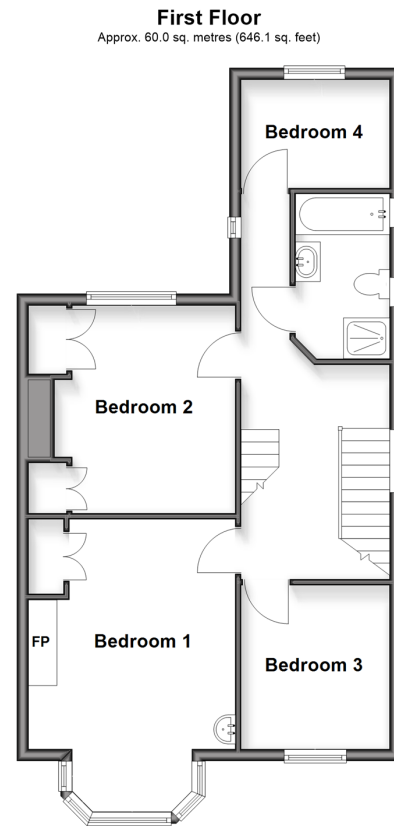
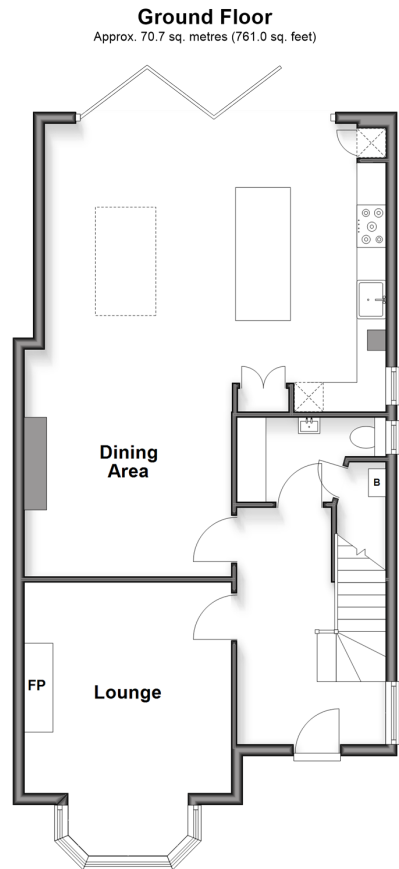
4x  1x  1x 

**Twiss Avenue, Hythe,
Kent, CT21**

OVER 60?

Secure this property
for up to **59% less!**

Wards
Helping you move forwards



Accommodation

GROUND FLOOR

Entrance Hall: 13'3 x 8'5 (4.04m x 2.57m)

Lounge: 15'6 (4.73m) x 11'9 (3.58m) narrowing to 10'7 (3.23m)

Kitchen: 19'3 x 16'9 (5.87m x 5.11m)

Dining Area: 11'7 (3.53m) narrowing to 10'5 (3.18m) x 9'4 (2.85m)

Utility Room: 7'9 x 4'9 (2.36m x 1.45m)

FIRST FLOOR

Landing

Bedroom 1: 17'6 (5.34m) x 11'5 (3.48m) narrowing to 10'7 (3.23m)

Bedroom 2: 11'11 x 10'6 (3.63m x 3.20m)

Bedroom 3: 9'2 x 8'5 (2.80m x 2.57m)

Bedroom 4: 8'5 x 6'3 (2.57m x 1.91m)

Bathroom: 9'3 x 5'1 (2.82m x 1.55m)

SECOND FLOOR

Loft room: 14'11 x 14'11 (4.55m x 4.55m)

OUTBUILDING

Annexe Dressing Room: 8'7 x 5'3 (2.62m x 1.60m)

Annexe Bedroom: 11'2 x 7'9 (3.41m x 2.36m)

Annexe Shower Room: 7'8 x 3'3 (2.34m x 0.99m)

OUTSIDE

Off Road Parking



Main features

- Beautifully extended home in a prime canal side position with detached annexe
- Stunning living space with contemporary re-fitted kitchen, underfloor heating across the whole of the ground floor
- Bi-fold doors leading out to the garden
- Separate lounge with feature open fireplace
- Large loft room, re-fitted bathroom with separate shower, utility with toilet



Nearest Schools

Primary Schools: Hythe Bay CofE Primary 0.5 miles, Saltwood CofE Primary 0.8 miles
Secondary Schools: Brockhill Park Performing Arts College 1.2 miles, The Folkestone School for Girls 2.6 miles, The Harvey Grammar School 3.0 miles



Transport Information

Train Stations: Sandling 1.5 miles, Westenhanger 2.8 miles, Folkestone West High Speed Link 2.8 miles



Address

Twiss Avenue, Hythe, Kent, CT21



Directions

For directions to this property please contact us.



Wards
Helping you move forwards

Call Hythe Branch 01303 267473 ■ wardsofkent.co.uk



■ Through a Homewise Home For Life Plan people aged 60+ can secure this property for up to 59% less, by purchasing a Lifetime Lease

EPC RATING	CURRENT:	POTENTIAL:

12825241/20260328/MEL/MIB