



Clarence Lane, SW15

£2,200 Per calendar month

Well presented two bedroom maisonette arranged over two floors, giving it a house like feel. Offers a spacious modern eat-in kitchen, separate reception room, smart bathroom suite and excellent storage throughout.

Clarence Lane is located in close proximity to both Putney and Roehampton High street, along with sought after areas such as Barnes and Wimbledon. Roehampton benefits from excellent bus links into central Putney for Underground and rail services.

Features

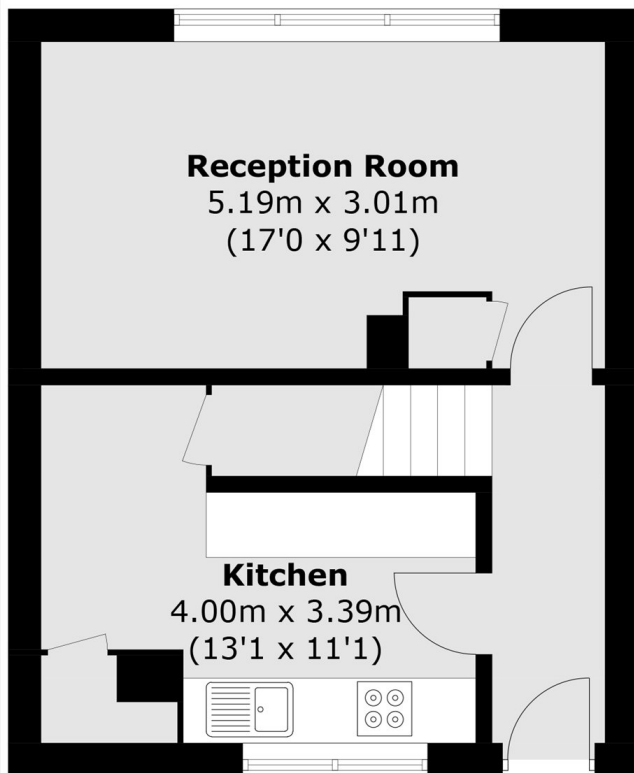
- Split Level Maisonette
- Two Double Bedrooms
- Separate Reception
- Modern Eat-In Kitchen
- Modern Bathroom
- Ample Storage



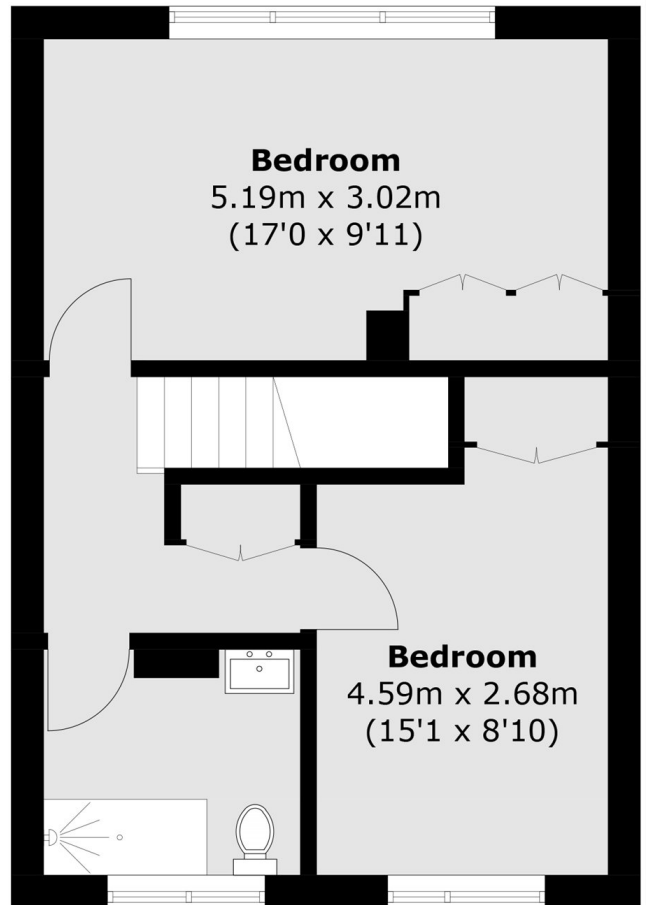
Clarence Lane, SW15



Clarence Lane,
London, SW15



First Floor



Second Floor

Total area (approx.): 73.6 sq. m (792.1 sq. ft)