






NEW KINGS ROAD

London SW6



NEW KINGS ROAD LONDON SW6

Overlooking Parsons Green, this beautifully finished apartment offers light, space and contemporary comfort in one of Fulham’s most desirable spots.

			EPC
2	2	1	C

Local Authority: Hammersmith and Fulham

Council Tax band: E

Tenure: Leasehold, approximately 95 years remaining

Ground rent: £150 per annum*

Service charge: £4,671 per annum*

Guide price: £1,050,000



SITUATED IN THE HEART OF PARSONS GREEN

Situated on New Kings Road, moments from the green spaces of Parsons Green and Eel Brook Common, this home offers the best of local living.

Enjoy Hally's Coffee for your morning brew, Waitrose for everyday essentials, and the vibrant cafés and boutiques of Parsons Green—all right on your doorstep.

For transport links, Parsons Green underground station offers access into Earls Court, Edgware Road and the wider city. The number 22 bus has a bus stop nearby, with additional bus routes available on Fulham Road.





TRIPLE-ASPECT WINDOWS AND GENEROUS PROPORTIONS

Positioned on a corner plot overlooking Parsons Green, this first-floor apartment in St Dionis House benefits from extensive natural light through its triple-aspect windows. Extending to approximately 1,100 sq ft, the property features a wide entrance hallway and high ceilings, enhancing the overall sense of space and style.

The accommodation is arranged to provide an efficient layout suitable for modern living, with a separate utility room keeping life organised, so the living spaces remain calm and clutter-free. The high ceilings amplify the sense of openness, while the layout flows seamlessly for both everyday comfort and entertaining. The heart of the home is a well-proportioned kitchen-dining room, with spacious reception area. There are two generously sized bedrooms, each with fitted storage, together with two contemporary bathrooms.

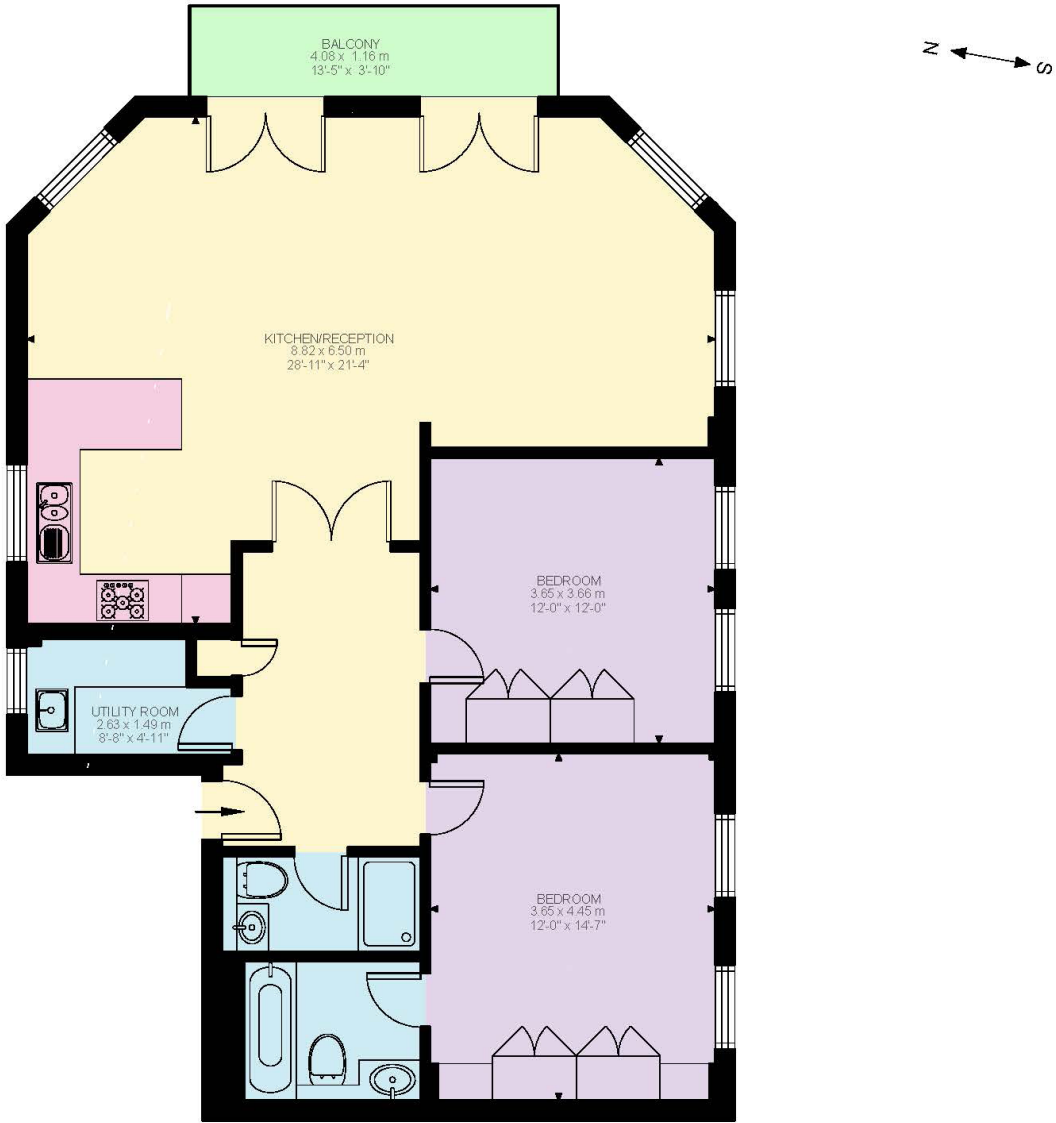
Every detail whispers quality, from the proportions to the finishes. And then there's the view—Parsons Green stretching out before you, a reminder that you're in one of Fulham's most desirable spots. Cafés, boutiques, and green spaces are just moments away, yet inside, it feels like your own private retreat.

*PLEASE NOTE - we have not been able to confirm the review period or the next review date for the Service Charge and Ground Rent. You should ensure you or your advisors make their own enquiries.

In addition to the annual Service Charge there is an annual payment of £1,900 which is for the sinking fund.

Service charge covers repairs and maintenance (internal & external), cleaning of common areas, gardening, property insurance and principal management fees.





First Floor
1067 ft²

Illustration for identification purposes only. Not to scale.
Floor Plan Drawn According To RICS Guidelines.

Approximate Gross Internal Area = 99.12 sq m / 1067 sq ft

This plan is for layout guidance only. Not drawn to scale unless stated. Windows and door openings are approximate. Whilst every care is taken in the preparation of this plan, please check all dimensions, shapes and compass bearings before making any decisions reliant upon them. (ID767266)

Lewin Craig-Corbett
+44 20 7751 2406
lewin.craig-corbett@knightfrank.com

Knight Frank Fulham
203 New Kings Road
London SW6 4SR

knightfrank.co.uk

Your partners in property

1. Particulars: These particulars are not an offer or contract, nor part of one. You should not rely on statements given by Knight Frank in the particulars, by word of mouth or in writing ("information") as being factually accurate about the property, its condition or its value. Neither Knight Frank nor any joint agent has any authority to make any representations about the property, and accordingly any information given is entirely without responsibility on the part of Knight Frank. 2. Material Information: Please note that the material information is provided to Knight Frank by third parties and is provided here as a guide only. While Knight Frank has taken steps to verify this information, we advise you to confirm the details of any such material information prior to any offer being submitted. If we are informed of changes to this information by the seller or another third party, we will use reasonable endeavours to update this as soon as practical. 3. Photos, Videos etc: The photographs, property videos and virtual viewings etc. show only certain parts of the property as they appeared at the time they were taken. Areas, measurements and distances given are approximate only. 4. Regulations etc: Any reference to alterations to, or use of, any part of the property does not mean that any necessary planning, building regulations or other consent has been obtained. A buyer must find out by inspection or in other ways that these matters have been properly dealt with and that all information is correct. 5. Fixtures and fittings: A list of the fitted carpets, curtains, light fittings and other items fixed to the property which are included in the sale (or may be available by separate negotiation) will be provided by the Seller's Solicitors. 6. VAT: The VAT position relating to the property may change without notice. 7. To find out how we process Personal Data, please refer to our Group Privacy Statement and other notices at <https://www.knightfrank.com/legals/privacy-statement>.

Particulars dated November 2025. Photographs and videos dated November 2025. All information is correct at the time of going to print. Knight Frank is the trading name of Knight Frank LLP. Knight Frank LLP is a limited liability partnership registered in England and Wales with registered number OC305934. Our registered office is at 55 Baker Street, London W1U 8AN. We use the term 'partner' to refer to a member of Knight Frank LLP, or an employee or consultant. A list of members names of Knight Frank LLP may be inspected at our registered office. If you do not want us to contact you further about our services then please contact us by either calling 020 3544 0692, email to marketing.help@knightfrank.com or post to our UK Residential Marketing Manager at our registered office (above) providing your name and address.

