

4

BED

Family Home in Excellent Location- No Chain

11A, Glynn Road, Peacehaven, BN10 8AN

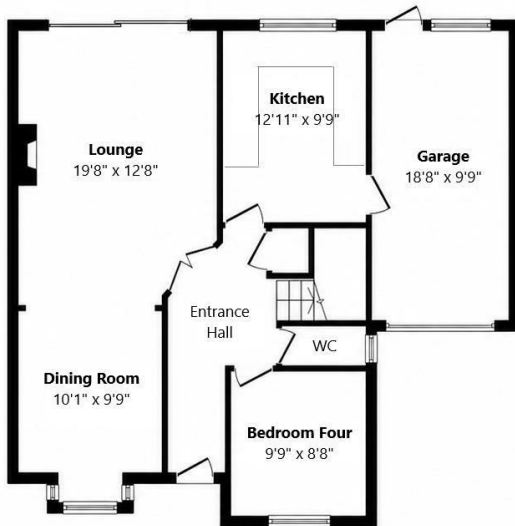


Offers Over £390,000

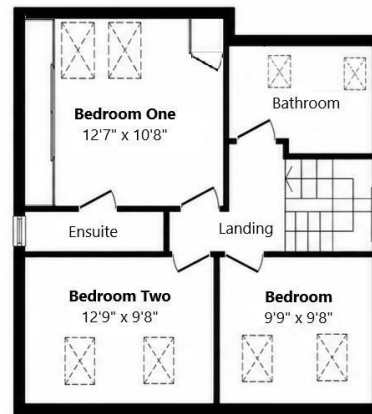
Freehold

phillipmann
we do more

www.phillipmann.com



Ground Floor



First Floor

inbrief...

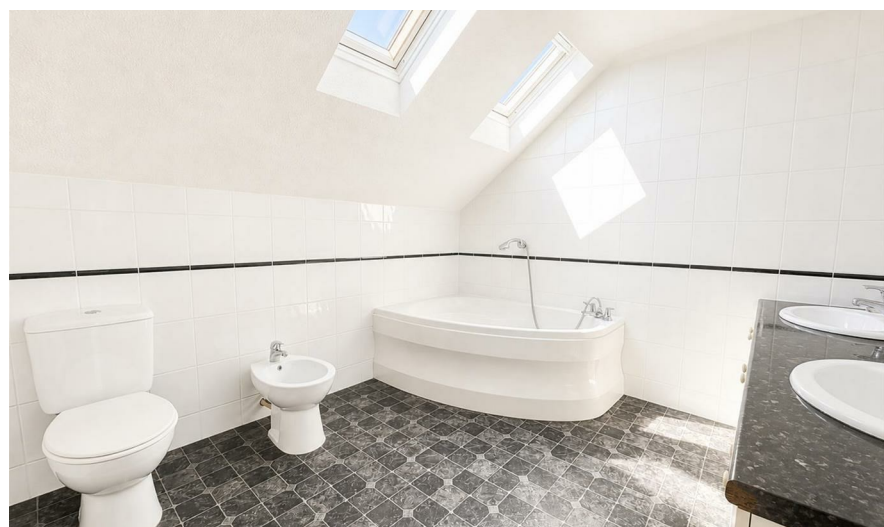
A superb opportunity to acquire a deceptively spacious family home, ideally positioned in one of the area's most sought-after locations. Offering versatile accommodation across two floors, this property is perfectly suited to modern family living, including flexible spaces ideal for home working.

The ground floor features a generous lounge/dining room that spans the full depth of the property, providing ample space for both relaxation and entertaining. A bay window to the front allows for plenty of natural light, while patio doors open directly onto the south-facing rear garden. Adjacent to this is a well-appointed, south-facing fitted kitchen, offering excellent storage, extensive work surfaces, and space for all essential appliances. A side door provides convenient access to the garage.

An additional reception room on this level is recently used as a home office but could easily function as a fourth bedroom, snug, or playroom. A cloakroom/WC completes the ground floor.

Upstairs, a spacious landing leads to three well-proportioned bedrooms. The principal bedroom benefits from fitted wardrobes and a modern en-suite shower room. The remaining bedrooms are served by a spacious family bathroom fitted with a bath, WC, and wash basin.

Externally, the property continues to impress. The low-maintenance front garden provides ample off-road parking and access to the garage, ideal for vehicles, storage, or utility use. To the rear, the private and secluded south-facing garden features a patio area—perfect for relaxing or entertaining in the sun.



EPC Rating - D
Council Tax Band - D

moreinfo...

Phillip Mann Peacehaven Office
226-230 South Coast Road, Peacehaven, BN10 8JR
01273 586622



To see more details on this & all our homes go to www.phillipmann.com