



Windmill Drive, NW2

£350,000

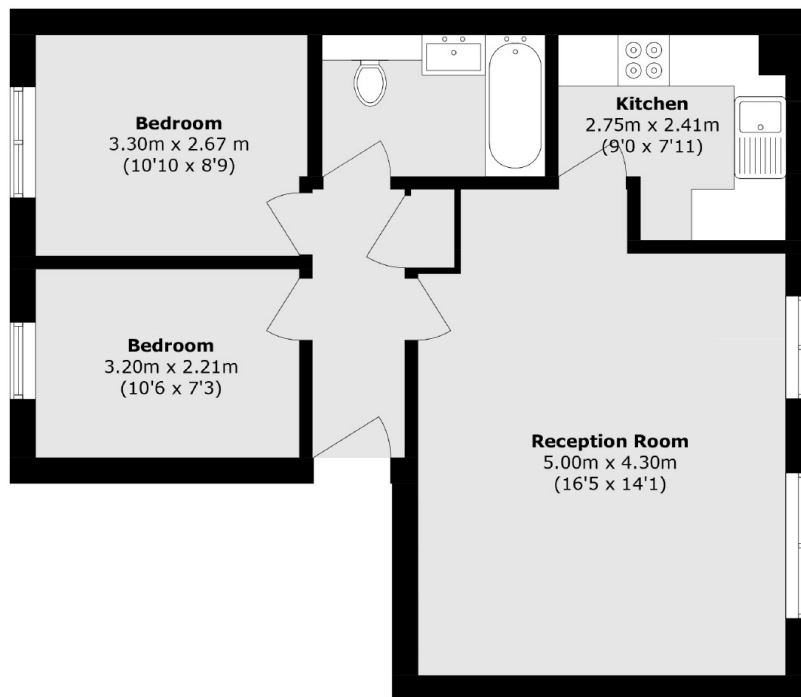
A lovely two bedroom, first floor apartment located in a purpose built block, ideal for a first time buyer or as an investment property, complete with a large, bright and airy reception room, a separate kitchen, residents' parking and communal gardens.

Windmill Drive is located close to Cricklewood Station (Thameslink) and Cricklewood Broadway, with a range of local amenities, restaurants, cafés, Brent Cross, and excellent transport and motorway links.

Features

- Two Bedroom Apartment
- Purpose Built
- First Floor
- Residents Parking
- Communal Gardens
- Long Lease

Windmill Drive, London, NW2



Total area (approx.): 54.4 sq. m (585.8 sq. ft)