



**Belmont Road, Harrow**

**£425,000 Freehold**

**A two-bedroom terraced family home offered for sale with no upper chain. Ideally situated for convenient access to excellent transport links and shopping facilities, including Harrow & Wealdstone Bakerloo and Lioness Line Station. Byron Recreation Ground and Harrow Leisure Centre are also located nearby, providing a range of leisure and recreational amenities.**

**EPC Rating: E  
Council Tax Band: D**

- Terraced Family Home • Two Double Bedrooms • Through Lounge • Close To Transport & Shopping Facilities • Recreation & Leisure Facilities Nearby • No Upper Chain



**Belmont Road, Harrow**

**£425,000 Freehold**

### **FURTHER DETAILS**

The accommodation comprises of a through lounge and a kitchen on the ground floor, whilst upstairs are two double bedrooms and a family bathroom. Outside there are gardens to the front and rear. Further benefits include double glazed windows and a gas central heating system.

### **LOCATION**

Belmont Road is a well-positioned residential street in Wealdstone, ideally situated between Stuart Road and Grasmere Gardens and running parallel to the popular Byron Recreation Ground.

The area is well served by a variety of local amenities, well-regarded schools, and excellent transport links, including Harrow & Wealdstone Station, providing convenient Bakerloo line and Lioness line services into Central London and beyond.

### **CONTACT RAWLINSON GOLD**

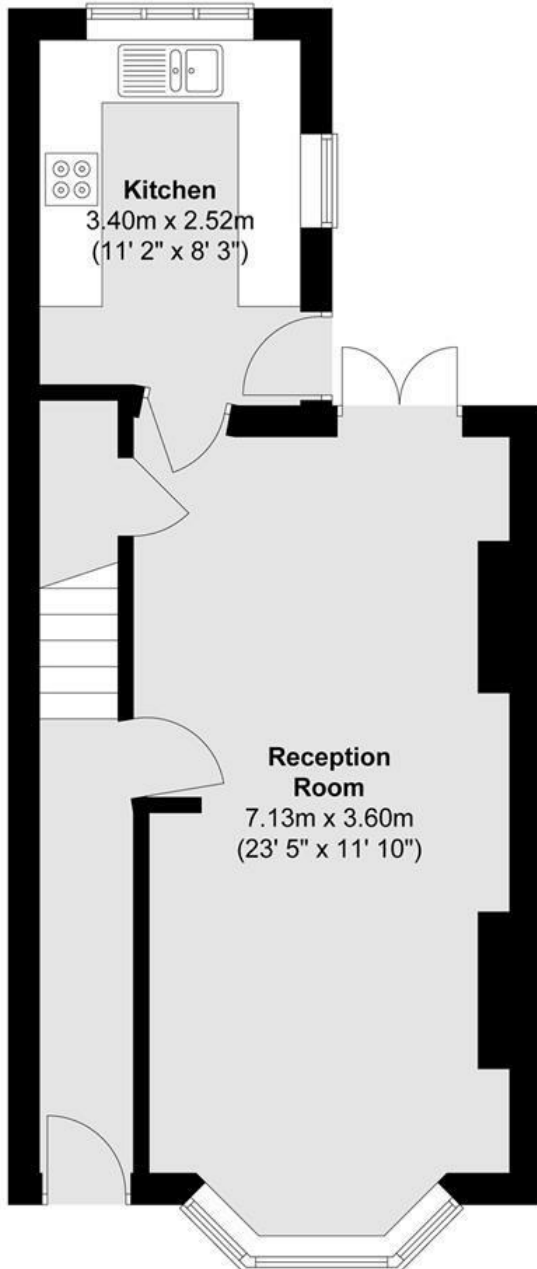
If you would like to arrange a viewing or discuss any aspect of this property, please contact our Harrow Office by telephone on 020 8861 2020 or by email at [harrow@rawlinsongold.co.uk](mailto:harrow@rawlinsongold.co.uk).

### **FREE MARKET APPRAISAL**

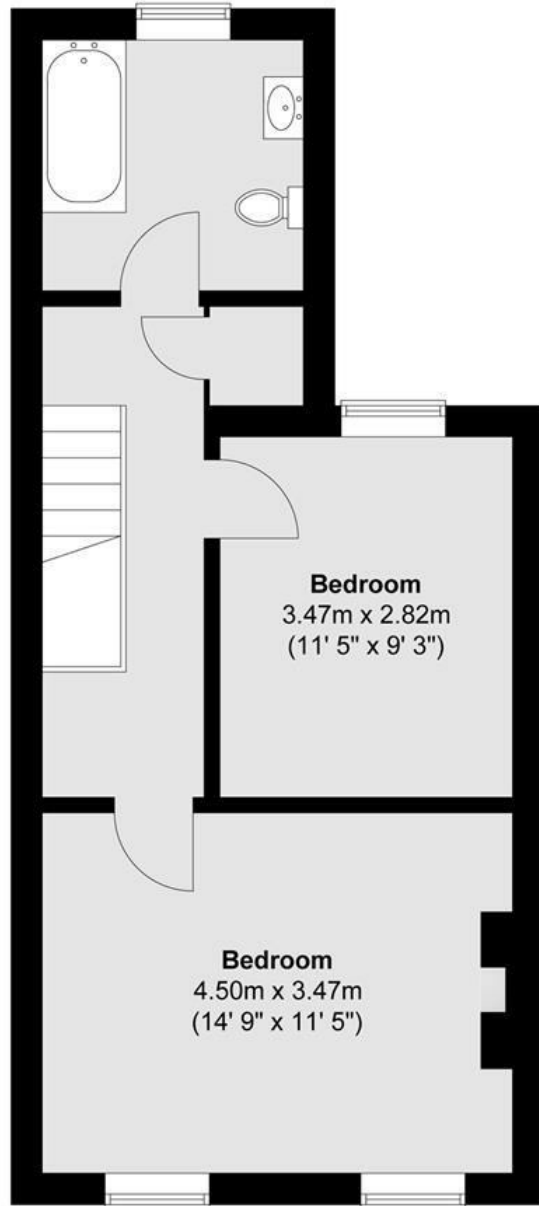
Please contact our Harrow Office if we can be of assistance with the sale or rental of your current property.



**Ground Floor**



**First Floor**



Total area (approx.) : 84.1 sq. m (905 sq. ft)