



1, Upper Shott, Cheshunt
EN7 6DR
£585,000



stevenoates.com



1 Upper Shott, Cheshunt, EN7 6DR

Situated in a popular turning in West Cheshunt, this extended and well-presented four-bedroom link-detached family home is offered to the market with no onward chain. Arranged over two floors and providing approximately 1,384 sq ft of accommodation, the property offers spacious and versatile living throughout. The ground floor comprises a welcoming entrance hall, ground floor cloakroom, a generous 24' lounge/dining room, two additional reception rooms, a fitted kitchen, utility room, and conservatory overlooking the rear garden. To the first floor are four well-proportioned bedrooms and a family bathroom. Externally, the property benefits from off-street parking to the front and a beautifully landscaped rear garden, ideal for outdoor entertaining. Offered on a chain-free basis, this excellent family home is conveniently located close to local amenities, schools, and transport links. Early viewing is highly recommended.

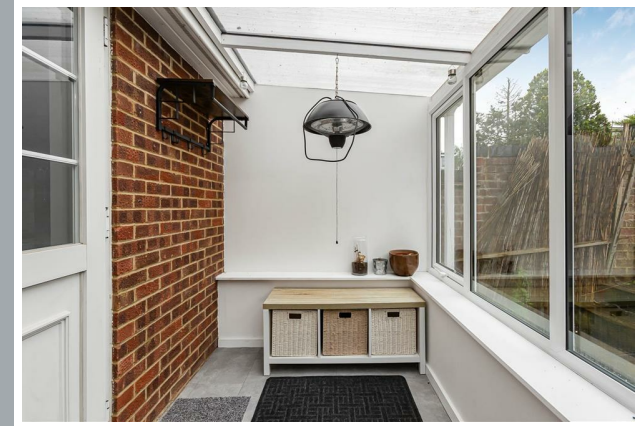
Upper Shott is a highly regarded residential area within Cheshunt, EN7, offering an attractive blend of suburban tranquillity and excellent connectivity. The area is particularly popular with families due to its proximity to well-regarded schools, green open spaces, and a range of local amenities. Residents benefit from easy access to Cheshunt and Cuffley town centres, which provide a variety of shops, restaurants, cafés, and leisure facilities. For commuters, both Cheshunt and Cuffley railway stations offer direct services into London, while the A10 and M25 are conveniently close by, providing excellent road links across Hertfordshire, Essex, and Greater London.



70 Fore Street, Hertford, Hertfordshire, SG14 1BY



70 Fore Street, Hertford, Hertfordshire, SG14 1BY



70 Fore Street, Hertford, Hertfordshire, SG14 1BY



70 Fore Street, Hertford, Hertfordshire, SG14 1BY



70 Fore Street, Hertford, Hertfordshire, SG14 1BY

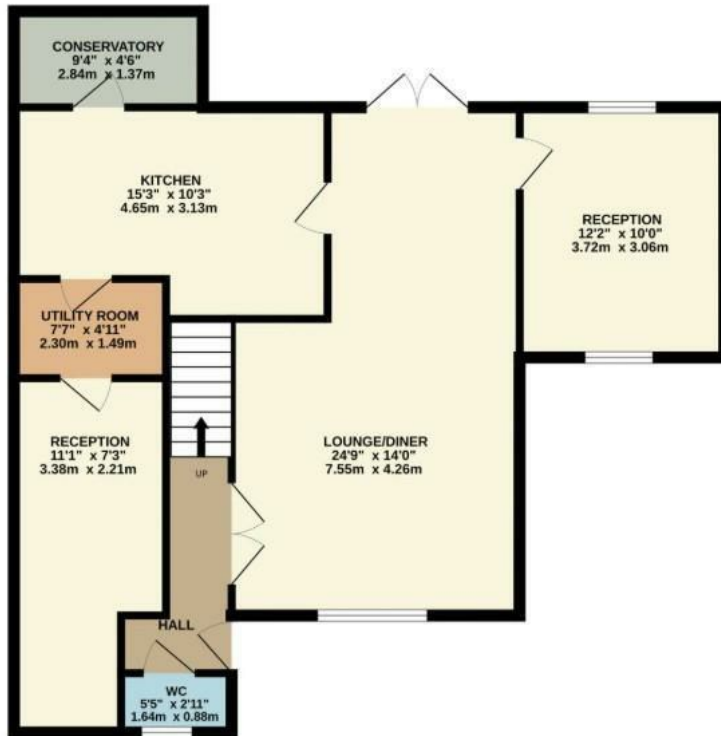


70 Fore Street, Hertford, Hertfordshire, SG14 1BY



70 Fore Street, Hertford, Hertfordshire, SG14 1BY

GROUND FLOOR
836 sq.ft. (77.6 sq.m.) approx.



1ST FLOOR
549 sq.ft. (51.0 sq.m.) approx.



TOTAL FLOOR AREA : 1384 sq.ft. (128.6 sq.m.) approx.

Whilst every attempt has been made to ensure the accuracy of the floorplan contained here, measurements of doors, windows, rooms and any other items are approximate and no responsibility is taken for any error, omission or mis-statement. This plan is for illustrative purposes only and should be used as such by any prospective purchaser. The services, systems and appliances shown have not been tested and no guarantee as to their operability or efficiency can be given.
Made with Metropix ©2026

These particulars, whilst believed to be accurate are set out as a general outline only for guidance and do not constitute any part of an offer or contract. Intending purchasers should not rely on them as statements of representation of fact, but must satisfy themselves by inspection or otherwise as to their accuracy. No person in this firm's employment has the authority to make or give any representation or warranty in respect of the property.



stevenoates.com