



RINGMER GARDENS, N19

£375,000

One Double Bedroom
Separate Kitchen Diner
Bright Reception
Modern Bathroom
Private Garden
Ample Storage

@marshandparsons
marshandparsons.co.uk

MARSH &
PARSONS



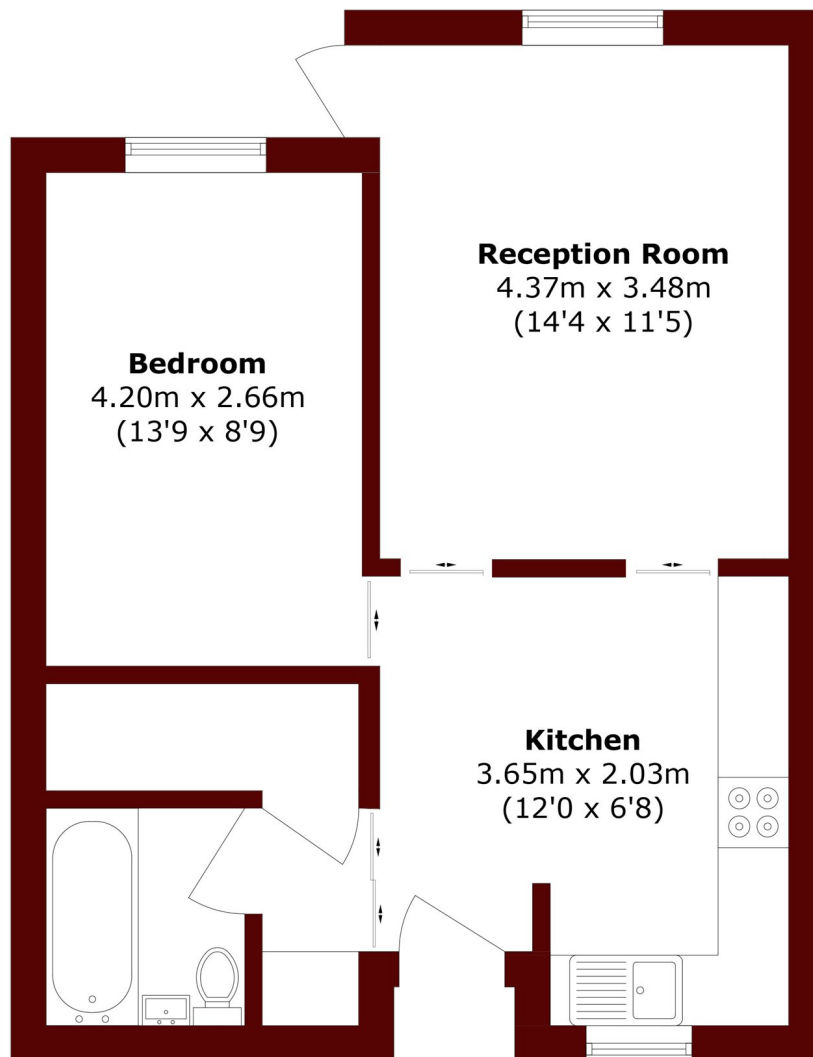
ABOUT THE PROPERTY

A very well-presented ground floor maisonette, complete with a private garden offering rear access to a communal park. The property also benefits from a spacious kitchen/diner, a bright reception room, well-proportioned double bedrooms, and ample storage throughout.

Ringmer Gardens is ideally situated within close proximity to both Upper Holloway and Finsbury Park. Within a short walk, you'll find a range of local amenities, as well as excellent transport links, including both Underground and Overground services.



STEP INSIDE RINGMER GARDENS



Total area (approx.): 47.9 sq. m (515.5 sq. ft)

Camden
020 7244 2200

Energy Rating: C We aim to make our particulars both accurate and reliable. However, they are not guaranteed; nor do they form part of an offer or contract. If you require clarification on any points then please contact us, especially if you're traveling some distance to view. Please note that appliances and heating systems have not been tested and therefore no warranties can be given as to their good working order

MARSH &
PARSONS