



Medina Road

London, N7

Guide Price £1,100,000

A charming, well-located four bedroom house with a southerly facing garden. It needs some modernisation but has the potential to be a wonderful family home. Potential (subject to planning) to add one more floor. Boasting many period features - accommodation comprises of four bedrooms, reception leading through to the kitchen, bathroom plus WC and utility room. Access to the garden can be via both the raised ground and the ground floor.

CHESTERTONS



Medina Road

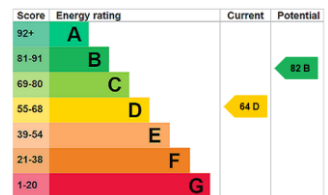
London, N7

- Potential to extend
- Four bedrooms
- Southerly facing kitchen
- Excellent location
- Bathroom plus WC



Medina Road is a very central location and is situated in a quiet enclave in close proximity to Finsbury Park. The area offers fantastic transport links and a vast array of shops, cafes and restaurants. The green open space of Finsbury Park is nearby as is the excellent Sobell leisure centre.

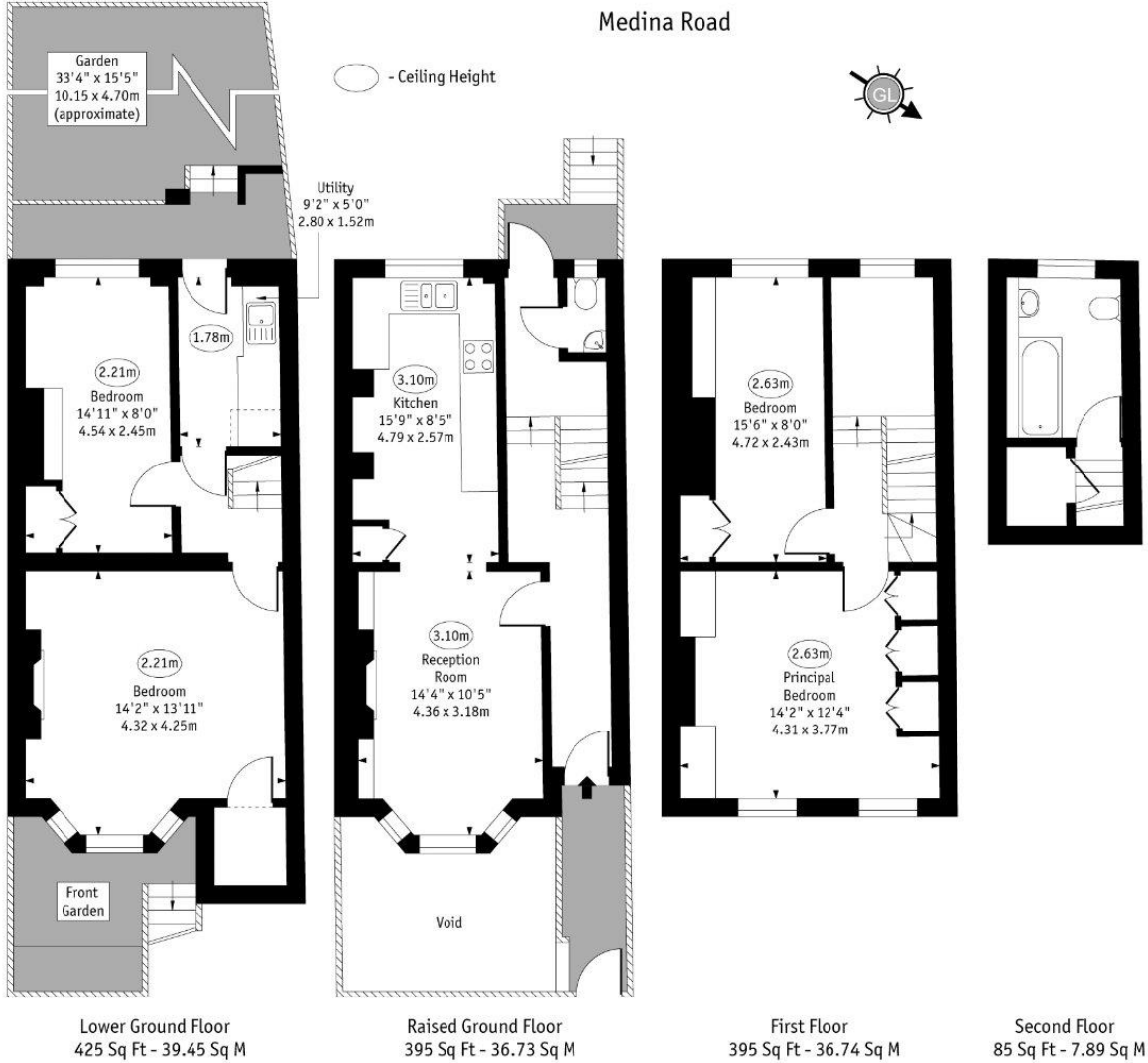
Tenure: Freehold
Service Charge: £0
Ground Rent: £0
Local Authority: Islington
Council Tax Band: E



Chestertons Camden & Kentish Town Sales

99-101 Parkway
 Camden
 London
 NW1 7PP
 camden@chestertons.co.uk
 020 7267 2053
 chestertons.co.uk

Medina Road



Approx Gross Internal Area 1300 Sq Ft - 120.81 Sq M

Every attempt has been made to ensure the accuracy of the floor plan shown. However, all measurements, fixtures, fittings, and data shown are approximate interpretations and for illustrative purposes only. Measured according to the RICS. Not To Scale.
www.goldlens.co.uk
Ref. No. 030139RH