



Belgrave Road, SW1V

£692 Per week

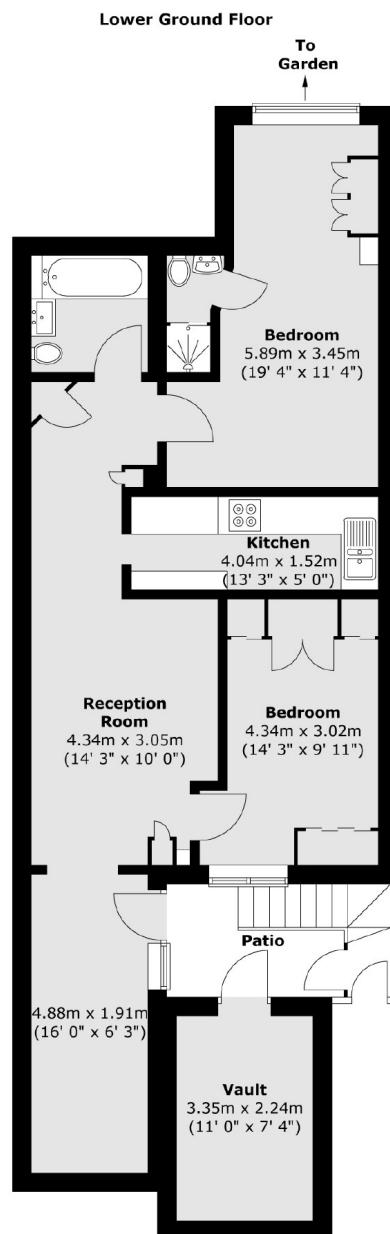
A well presented spacious two bedroom, two bathroom flat arranged over the lower ground floor of a Victorian building, with private outside space and dining area.

Located at the southern end of Belgrave Road, Pimlico tube station is only a minute or two away as well as the Thames. The delights of the Moreton Triangle are just around the corner.

Features

- Two Bedrooms
- Two Bathrooms
- Wooden Floors
- Separate Kitchen
- Private Terrace
- Pimlico and Victoria

Belgrave Road, London, SW1V



Total area (approx.) : 71.2 sq. m (766 sq. ft)
Total vault area (approx.) : 7.6 sq. m (82 sq. ft)
Total patio area (approx.) : 7.2 sq. m (77 sq. ft)