



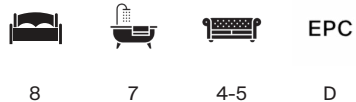
PARK ROAD

Isleworth TW7



BEAUTIFULLY DESIGNED IN THE GEORGIAN STYLE HOUSE

An exquisite riverside estate occupying a discrete and generous plot,
within just 8.5 miles of Hyde Park Corner.



Local Authority: London Borough of Hounslow

Council Tax band: H

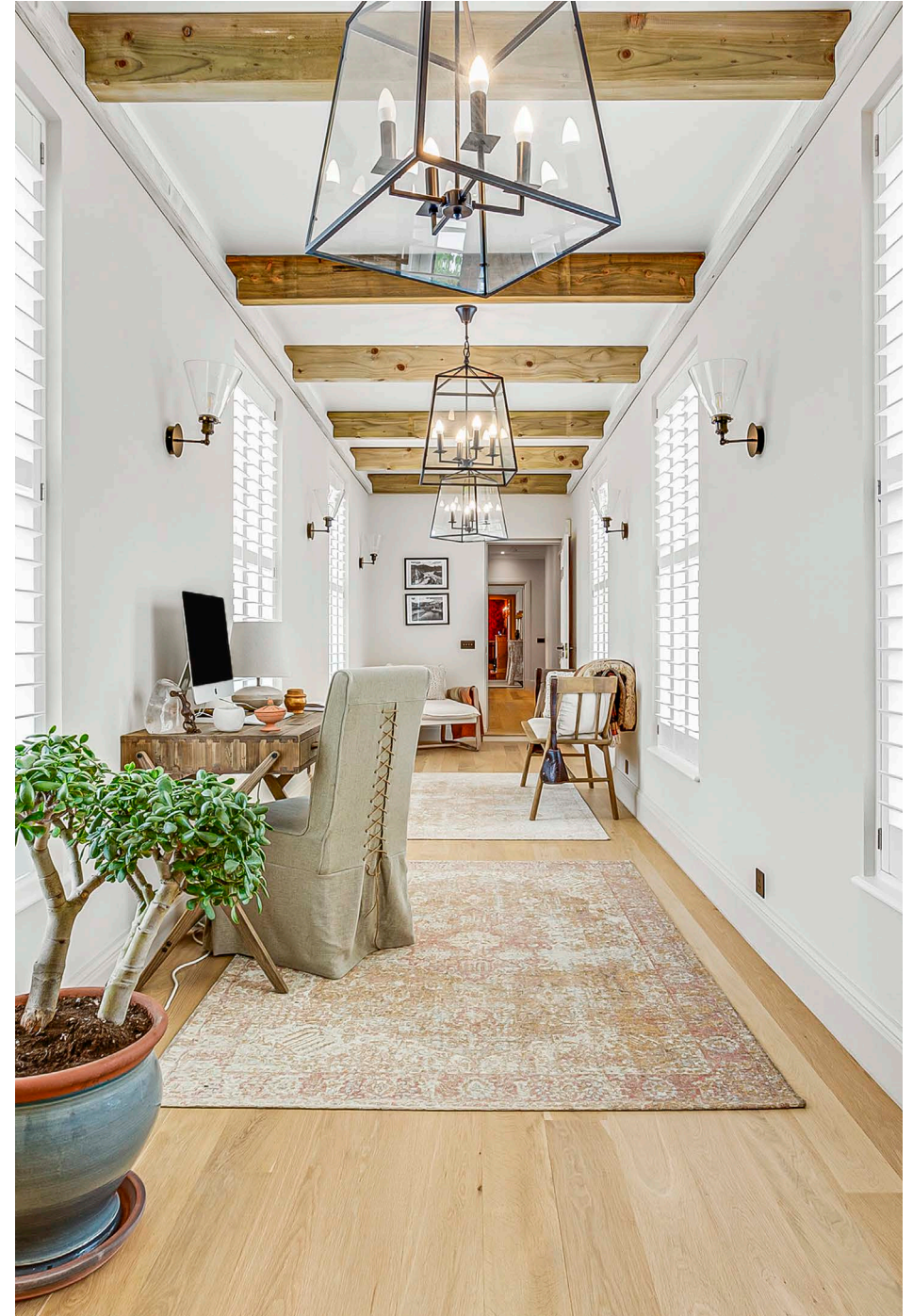
Tenure: Freehold

Guide Price: £8,250,000



BEAUTIFULLY APPOINTED AND BESPOKE KITCHEN

Beautifully designed in the Georgian style, Ferry House replaced a dower house which was demolished after suffering a direct hit from a doodlebug during World War II. The missile passed through the branches of the copper beech which was supposed to have been cut down as it was thought it would never regain its shape. However, it was never felled and still stands proud to this day. The house was rebuilt in 1953 by the Duke of Northumberland and subsequently bought by his brother-in-law, Lord Gilmour. Painter, William Turner, also once lived at Ferry House and today, his masterpieces grace the walls of the Tate.







TASTEFULLY PRESENTED AND LATERALLY CONFIGURED

Having been the subject of a recent renovation, the property provides tastefully presented and laterally configured accommodation that lends the house equally well to both everyday family life and more formal entertaining. Furthermore the layout and separate entrances provide superbly for live in staff and generational living. Of particular note is the striking reception hallway with its gorgeous galleried staircase. The beautifully appointed and bespoke kitchen has a country feel and features blue marble worktops and a La Cornue range cooker. There are also four reception rooms on the ground floor.



STUNNING RIVERSIDE GARDENS

Enviably perched between the River Thames and historic Syon Park, Ferry House occupies a genuinely semi-rural setting within the charming village of Old Isleworth. There is easy access onto the A316 and A4, connecting onto the M3 and M4 motorways respectively. Local amenities cater well for day to day requirements whilst St Margaret's Village and Richmond town are approximately two and three miles away respectively. Richmond is internationally renowned for its sophisticated array of shops and restaurants, (with a large representation by many of the major retail outlets) in addition to a quaint array of antique, boutique and more specialist stores that are mainly located in a series of enchanting cobbled alleyways that lead off of picturesque Richmond Green. Local schools enjoy an excellent reputation and are considered amongst the best in the country.









Approximate Gross Internal Area = 955.4 sq m / 10283 sq ft

This plan is for layout guidance only. Not drawn to scale unless stated. Windows and door openings are approximate. Whilst every care is taken in the preparation of this plan, please check all dimensions, shapes and compass bearings before making any decisions reliant upon them. (ID767266)

We would be delighted
to tell you more.

Edward Adler
020 8939 2802
edward.adler@knightfrank.com

Knight Frank Richmond
23 Hill Street
TW9 1SX

[knightfrank.co.uk](https://www.knightfrank.co.uk)

Your partners in property

1. Particulars: These particulars are not an offer or contract, nor part of one. You should not rely on statements given by Knight Frank in the particulars, by word of mouth or in writing ("information") as being factually accurate about the property, its condition or its value. Neither Knight Frank nor any joint agent has any authority to make any representations about the property, and accordingly any information given is entirely without responsibility on the part of Knight Frank. 2. Material Information: Please note that the material information is provided to Knight Frank by third parties and is provided here as a guide only. While Knight Frank has taken steps to verify this information, we advise you to confirm the details of any such material information prior to any offer being submitted. If we are informed of changes to this information by the seller or another third party, we will use reasonable endeavours to update this as soon as practical. 3. Photos, Videos etc: The photographs, property videos and virtual viewings etc. show only certain parts of the property as they appeared at the time they were taken. Areas, measurements and distances given are approximate only. 4. Regulations etc: Any reference to alterations to, or use of, any part of the property does not mean that any necessary planning, building regulations or other consent has been obtained. A buyer must find out by inspection or in other ways that these matters have been properly dealt with and that all information is correct. 5. Fixtures and fittings: A list of the fitted carpets, curtains, light fittings and other items fixed to the property which are included in the sale (or may be available by separate negotiation) will be provided by the Seller's Solicitors. 6. VAT: The VAT position relating to the property may change without notice. 7. To find out how we process Personal Data, please refer to our Group Privacy Statement and other notices at <https://www.knightfrank.com/legals/privacy-statement>.

Particulars dated April 2025. Photographs and videos dated April 2025. All information is correct at the time of going to print. Knight Frank is the trading name of Knight Frank LLP. Knight Frank LLP is a limited liability partnership registered in England and Wales with registered number OC305934. Our registered office is at 55 Baker Street, London W1U 8AN. We use the term 'partner' to refer to a member of Knight Frank LLP or an employee or consultant. A list of members names of Knight Frank LLP may be inspected at our registered office. If you do not want us to contact you further about our services then please contact us by either calling 020 3544 0692, email to marketing.help@knightfrank.com or post to our UK Residential Marketing Manager at our registered office (above) providing your name and address.