

CHIDDINGSTONE STREET

London SW6



CHIDDINGSTONE STREET LONDON SW6

An incredible five bedroom Lion House with a 21 foot south-west facing garden situated on this highly sought after street in the Peterborough Estate.



5



3



2

EPC

D

Local Authority: London Borough of Hammersmith and Fulham

Council Tax band: G

Tenure: Freehold

Guide price: £3,350,000



SPACIOUS AND BRIGHT DOUBLE RECEPTION ROOM

The accommodation comprises; a double reception room, a fabulous open plan kitchen/dining room with doors leading to the sunny aspect garden.

The kitchen is flooded with natural light from the skylight windows and has been fitted with an array of units and integrated appliances.

There is further reception space on the lower ground with a utility room and guest WC.







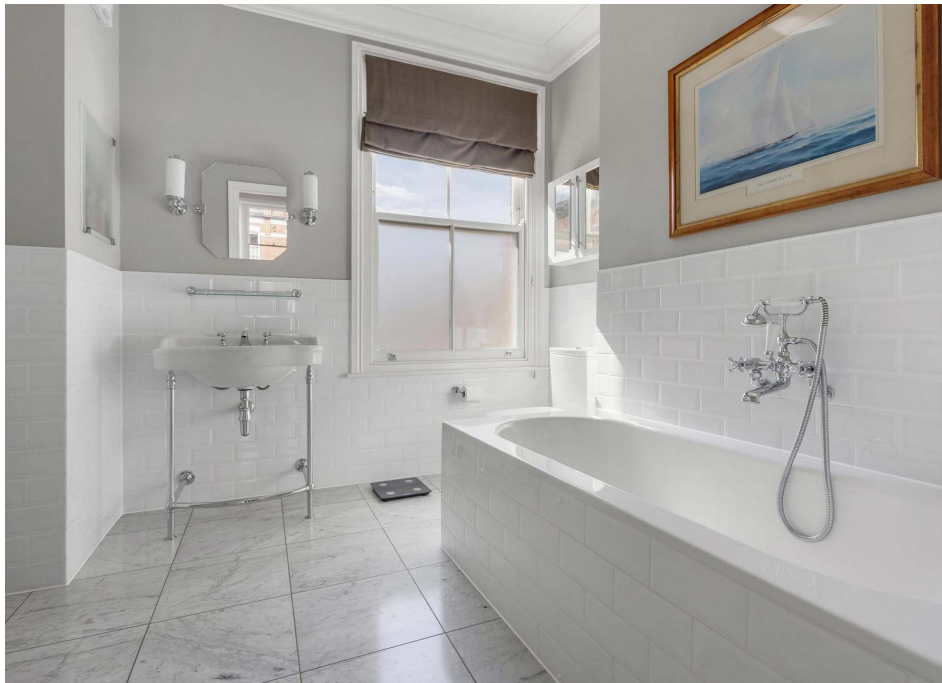




PRINCIPAL BEDROOM COMPLETE WITH EN SUITE

The first floor offers two generously sized double bedrooms, including a principal bedroom complete with en suite bathroom. A separate shower room serves the second bedroom.

The top floor comprises three well-proportioned bedrooms, a modern family bathroom and ample eaves storage.







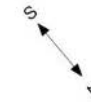
LOCAL AREA AND TRANSPORT LINKS

The property is located at the top of Chiddingstone Street with the local shops/cafes/restaurants on the doorstep in the sought-after area of Parsons Green with residents enjoying access to an array of green spaces including Parsons Green itself, Eel Brook Common, and local parks such as South Park and Hurlingham Park. There are several excellent schools in the area such as Thomas' Fulham, Parsons Green Prep, Fulham Prep and Lady Margaret School, along with bilingual offerings of L'Ecole Marie D'Orliac and the Fulham Bilingual School. Nurseries in the area include Pippa Pop-Ins and L'Ecole des Petits.

For transport links, Parsons Green underground station (District Line) 0.3 miles away. The area has a number of bus connections to Chelsea, central London, Putney, and Hammersmith, providing travel throughout the city.







(Including Eaves Storage)

Approximate Gross Internal Area = 251.12 sq m / 2,703 sq ft

This plan is for layout guidance only. Not drawn to scale unless stated. Windows and door openings are approximate. Whilst every care is taken in the preparation of this plan, please check all dimensions, shapes and compass bearings before making any decisions reliant upon them. (ID767266)

Arabella Howard-Evans

+44 20 7751 2402

arabella.howardevans@knightfrank.com

Knight Frank Fulham

203 New Kings Road

London SW64SR

knightfrank.co.uk

Your partners in property

1. Particulars: These particulars are not an offer or contract, nor part of one. You should not rely on statements given by Knight Frank in the particulars, by word of mouth or in writing ("information") as being factually accurate about the property, its condition or its value. Neither Knight Frank nor any joint agent has any authority to make any representations about the property, and accordingly any information given is entirely without responsibility on the part of Knight Frank. 2. Material Information: Please note that the material information is provided to Knight Frank by third parties and is provided here as a guide only. While Knight Frank has taken steps to verify this information, we advise you to confirm the details of any such material information prior to any offer being submitted. If we are informed of changes to this information by the seller or another third party, we will use reasonable endeavours to update this as soon as practical. 3. Photos, Videos etc: The photographs, property videos and virtual viewings etc. show only certain parts of the property as they appeared at the time they were taken. Areas, measurements and distances given are approximate only. 4. Regulations etc: Any reference to alterations to, or use of, any part of the property does not mean that any necessary planning, building regulations or other consent has been obtained. A buyer must find out by inspection or in other ways that these matters have been properly dealt with and that all information is correct. 5. Fixtures and fittings: A list of the fitted carpets, curtains, light fittings and other items fixed to the property which are included in the sale (or may be available by separate negotiation) will be provided by the Seller's Solicitors. 6. VAT: The VAT position relating to the property may change without notice. 7. To find out how we process Personal Data, please refer to our Group Privacy Statement and other notices at <https://www.knightfrank.com/legals/privacy-statement>.

Particulars dated September 2025. Photographs and videos dated August 2025. All information is correct at the time of going to print. Knight Frank is the trading name of Knight Frank LLP. Knight Frank LLP is a limited liability partnership registered in England and Wales with registered number OC305934. Our registered office is at 55 Baker Street, London W1U 8AN. We use the term 'partner' to refer to a member of Knight Frank LLP, or an employee or consultant. A list of members names of Knight Frank LLP may be inspected at our registered office. If you do not want us to contact you further about our services then please contact us by either calling 020 3544 0692, email to marketing.help@knightfrank.com or post to our UK Residential Marketing Manager at our registered office (above) providing your name and address.

