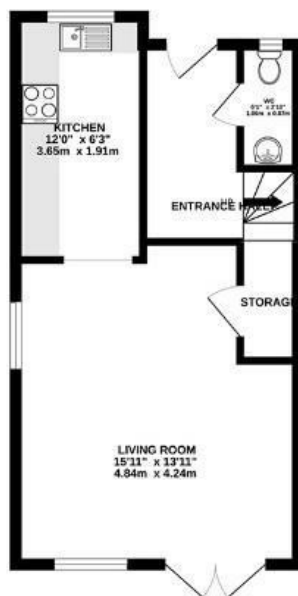


Bawns Close

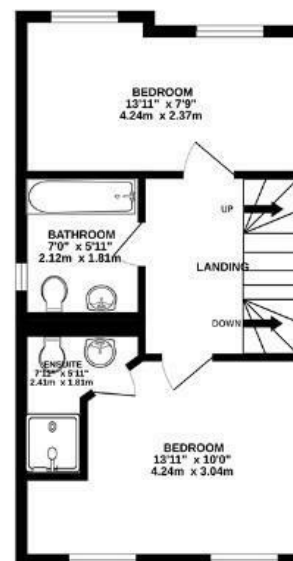
LONG ASHTON

APPROXIMATE FLOOR AREA
88.1 SQM / 948 SQFT

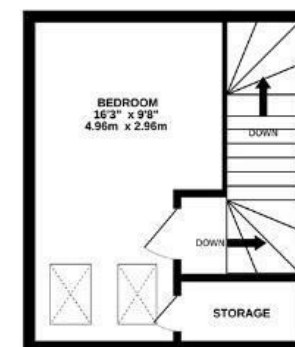
GROUND FLOOR



FIRST FLOOR



SECOND FLOOR



Boardwalk

Bawns Close

LONG ASHTON, BRISTOL

£
£475,000

zzz
3 Bedrooms

📍
BS41 9FN

🦆
2 Bathrooms

"Living here has been lovely, somewhere we can fully relax! We absolutely love Long Ashton (and would stay if we could afford to upsize) because it's such a nice community. Particularly Glebe Road/Bawns Close, everyone looks out for each other. We're really lucky to have great neighbours both sides! We also love how close we are to Ashton Court, it's great for a weekend walk and a stop in The Angel on the way home. Beautiful views at the front of the house, especially as the sun goes down."

