



King Edwards Gardens, W3

£600 Per week

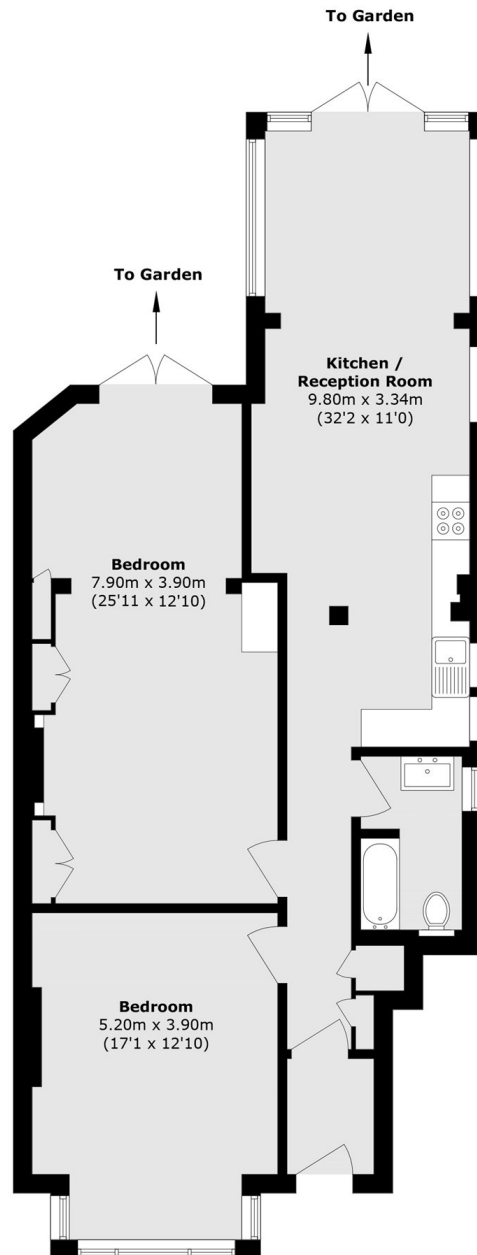
This magnificent ground floor apartment would be the envy of all your neighbours, its got everything you want, storage, wooden floors and a private garden, suitable for a family.

The nearest stations are the Acton Town, Ealing Common and Acton Overground. Local supermarkets, shops, cafes and restaurants are also on your doorsteps.

Features

- Ground Floor Flat
- Two Double Bedrooms
- Large Reception Room
- Modern Kitchen
- Private Rear Garden
- High Ceilings

King Edwards Gardens, London, W3



Total area (approx.): 96.2 sq. m (1035.4 sq. ft)

Dexters

Acton
171 High Street
London
W3 6LP
Lettings
020 8896 2121

Energy Rating: C. We aim to make our particulars both accurate and reliable. However they are not guaranteed; nor do they form part of an offer or contract. If you require clarification on any points then please contact us, especially if you're traveling some distance to view. Please note that appliances and heating systems have not been tested and therefore no warranties can be given as to their good working order.

 **RICS** | Regulated
Estate Agent
and Letting Agent

[dexters.co.uk](https://www.dexters.co.uk)