

## Mare Street, E8

£400,000

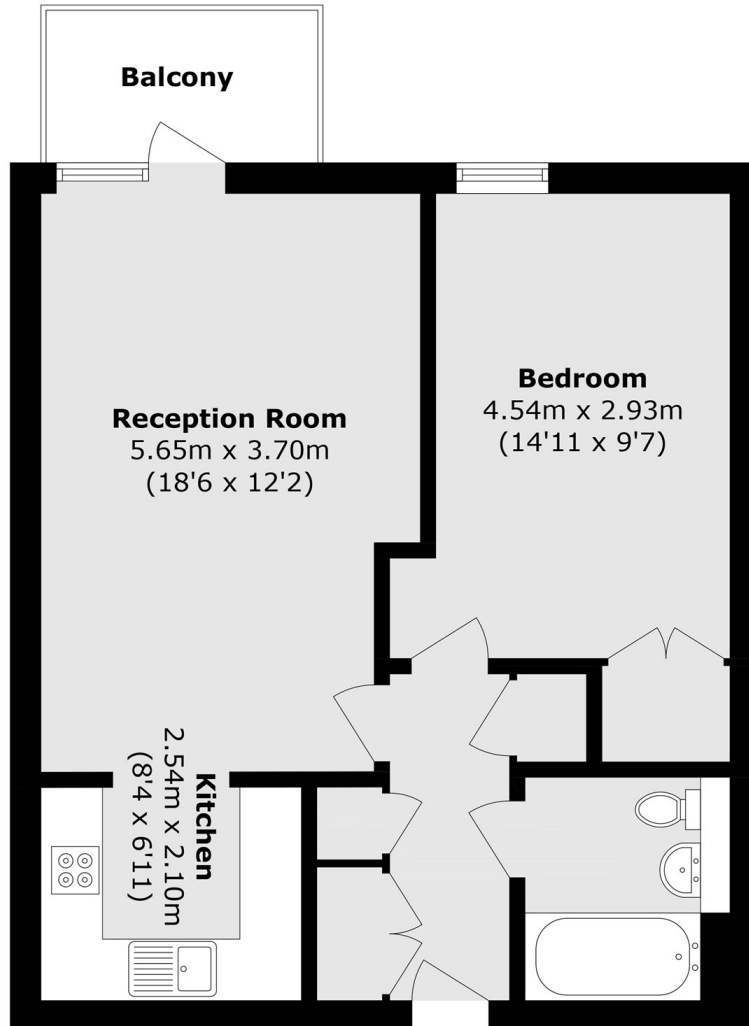
A one double bedroom apartment measuring in excess of 570 square feet located within a secure purpose built development. This property offers open plan living room and kitchen area with floor- to- ceiling windows and direct access to a south west facing balcony. This property is being offered chain free. Alternatively, the property can be purchased via Shared Ownership.

Cordwainer house is located a quarter of a mile from Broadway Market and its abundance of Shops, Cafes and Restaurants. The green open spaces of London Fields and Victoria Park are equidistant and the Regents canal is 100 yards away.

### Features

- Close to London Fields & Broadway Market
- Lift access
- South-west Facing Balcony
- Lift Access
- Open-plan Living Space
- Chain Free

# Mare Street, London, E8



Total area (approx.): 53.0. sq. m (570.5 sq. ft)  
Balcony area (approx.): 4.2 sq. m (45.2 sq. ft)