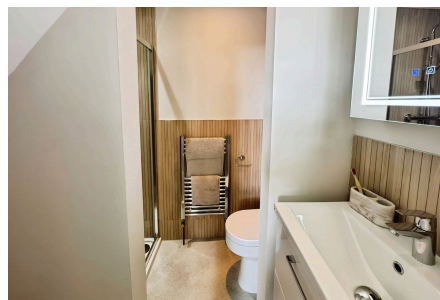


Savernake Street, Swindon, Wiltshire, SN1 3LZ

£750PCM (Deposit: £750)


 1 1 1



	Current	Potential
Very energy efficient - lower running costs		
(92 plus) <b>A</b>		
(81-91) <b>B</b>		82
(69-80) <b>C</b>	70	
(55-68) <b>D</b>		
(39-54) <b>E</b>		
(21-38) <b>F</b>		
(1-20) <b>G</b>		
Not energy efficient - higher running costs		

Tax Band: B Furnished: Not Specified

A huge double en-suite bedroom located in this beautiful modern HMO in Old Town Swindon available mid May 2026.

A stunningly created co-living house, featuring a fantastic modern communal kitchen, with all bills included. Located in a prime location, with everything you could need within walking distance.



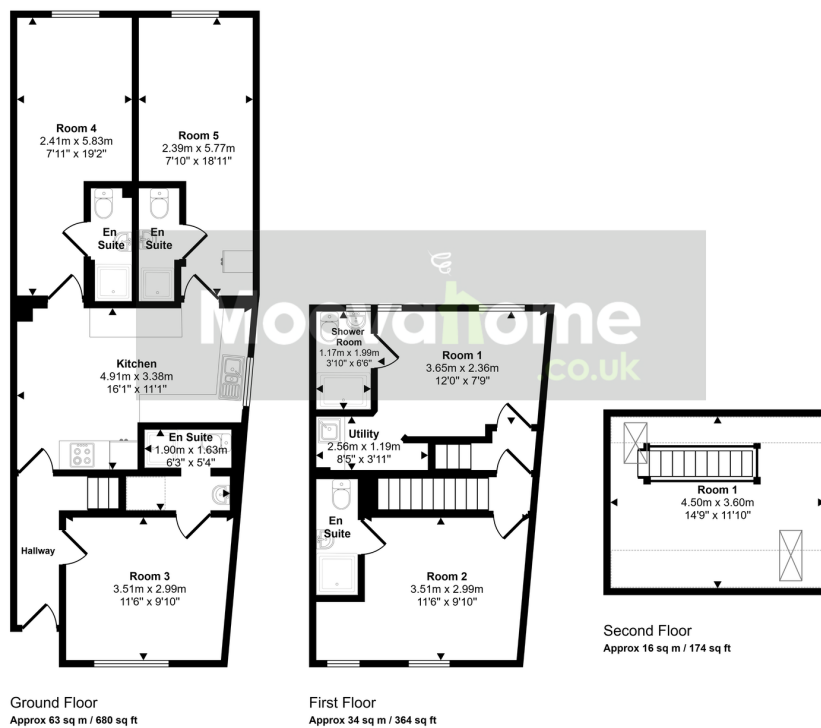
Designed for comfort and convenience throughout, including spacious and acoustically insulated rooms. Bedrooms are all en-suite and benefit from super-fast internet, wardrobes, bedside lights and great natural light throughout.

There is also off road parking included with this tenancy located and the rear of the property.

## Key Features

- Managed by Moovahome
- Available Now
- All bills included
- Some parking available at £50 per month

Approx Gross Internal Area  
113 sq m / 1219 sq ft



Ground Floor  
Approx 63 sq m / 680 sq ft

First Floor  
Approx 34 sq m / 364 sq ft

Second Floor  
Approx 16 sq m / 174 sq ft

Denotes head height below 1.5m

This floorplan is only for illustrative purposes and is not to scale. Measurements of rooms, doors, windows, and any items are approximate and no responsibility is taken for any error, omission or mis-statement. Icons of items such as bathroom suites are representations only and may not look like the real items. Made with Made Snappy 360.