



Asking Price Of £390,000

Montserrat Rise,
Torquay, TQ2 7GP

A beautifully presented four bedroom semi-detached home offering parking, a garage, and spacious accommodation throughout. On this floor, you will find three excellent-sized double bedrooms, including a principal bedroom with an en-suite, alongside a modern family bathroom. Downstairs, the property offers a fantastic-sized separate living room and a stunning contemporary kitchen, creating distinct spaces for both relaxing and entertaining. The sleek black kitchen has a stylish modern finish and benefits from integrated appliances including a built-in fridge and separate freezer, dishwasher, double oven and induction hob. Both the kitchen and living room have their own patio doors leading out into the garden, allowing plenty of natural light throughout the home. There is also an additional downstairs WC and a further spacious double bedroom on this level. Outside is a low-maintenance south-facing garden finished with AstroTurf.



Door into hallway.

BEDROOM ONE A large double bedroom, window to back and radiator.

EN-SUITE Comprising corner shower cubicle, low level WC and hand wash basin.

BEDROOM TWO Another double bedroom, window to front and radiator.

BEDROOM THREE A good sized bedroom, window to front and radiator.

BATHROOM Comprising bath, low level WC, wash hand basin and wall hung radiator.

DOWNSTAIRS TO KITCHEN/DINER A superb spacious kitchen/diner with a modern and stylish finish benefiting from integrated appliances including built in fridge and built in freezer, dishwasher, double oven and induction hob, French doors lead out to patio and garden, ample space for dining table and radiator.

LOUNGE A good sized bedroom lounge with fire surround and I set fire, French doors out to patio and garden and wall hung radiator.

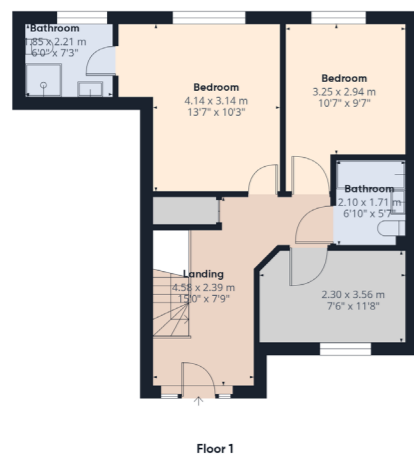
BEDROOM FOUR/OFFICE/STUDY A good sized bedroom that can be used as a bedroom or study, window to front radiator.

CLOAK Low level WC, hand wash basin, also utility area with plumbing washing machine and space for dryer.

GARDEN ROOM Accessible from the garden is a separate room that can be used as a home office, studio, gym or hobby sauce, complete with underfloor heating.

OUTSIDE Parking and garage to front.

GARDEN A beautifully maintained, low maintenance south facing garden finished with Astro turf. A perfect space to relax and enjoying the sun.



Address 'Montserrat Rise, Torquay, TQ2 7GP'

Tenure 'Freehold'

Council Tax Band 'D'

EPC Rating '71 | C'

Taylor's Estate Agents
256 Torquay Road
Paignton
TQ3 2EZ