



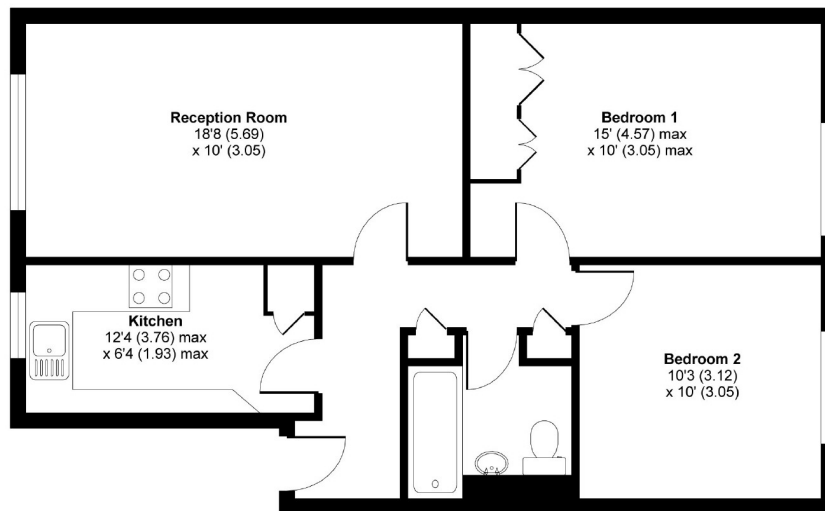
## Weir Road, SW12

**£1,300 PCM**

A bright and spacious two bedroom purpose built flat. This property would be suitable for a professional couple or professional sharers.

- Purpose Built
- Top Floor Flat
- Two Double Bedrooms
- Reception Room
- Modern Kitchen
- Close to Station

For further information on the costs associated with renting a property, please pop into our office or visit our website.



SECOND FLOOR

APPROX. GROSS INTERNAL FLOOR AREA 644 SQFT / 59.8 SQM

Weir Road, London, SW12

Copyright nichecom.co.uk 2010 Produced for Jacksons the Independent Estate Agents REF : 101672

Jacksons Balham  
8-11 Balham Station Road  
London  
SW12 9SG  
020 8675 6565  
balham.lettings@jacksonsestateagents.com

Energy Rating: E We aim to make our particulars both accurate and reliable. However they are not guaranteed; nor do they form part of an offer or contract. If you require clarification on any points then please contact us, especially if you're traveling some distance to view. Please note that appliances and heating systems have not been tested and therefore no warranties can be given as to their good working order.