



25 Rodwell Court Hersham Road Walton-On-Thames Surrey KT12 1RF

£1700pcm + Initial deposit



Rodwell Court Walton on Thames KT12

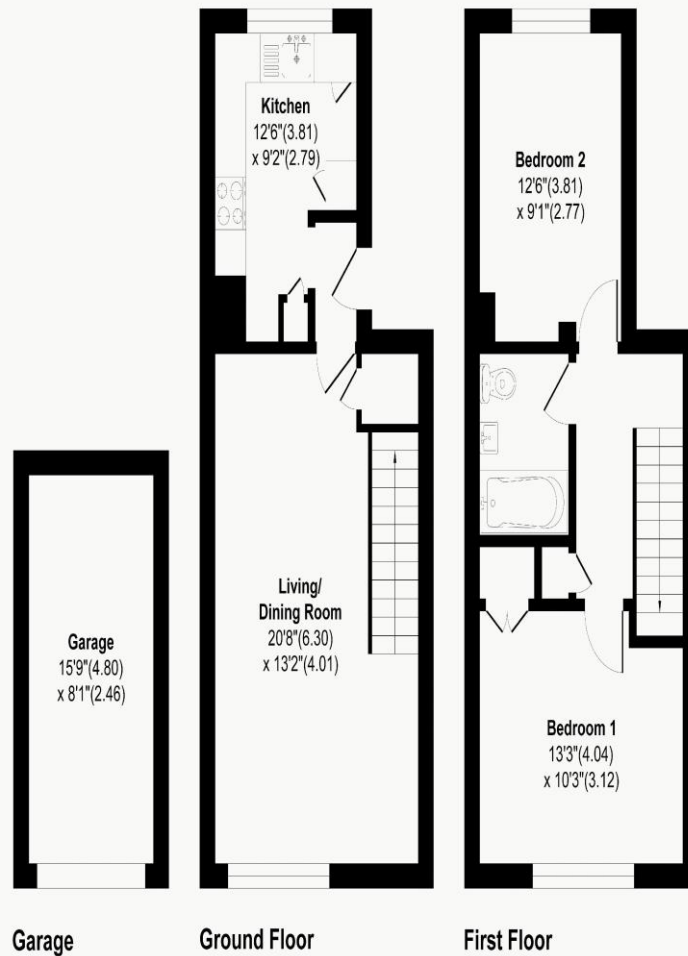


Approximate Area = 783 sq ft / 72.7 sq m

Garage Area = 127 sq ft / 11.8 sq m

Total Area = 910 sq ft / 84.5 sq m

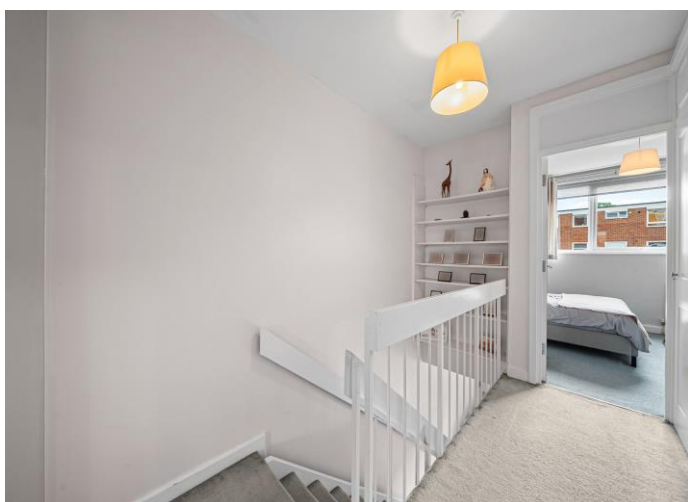
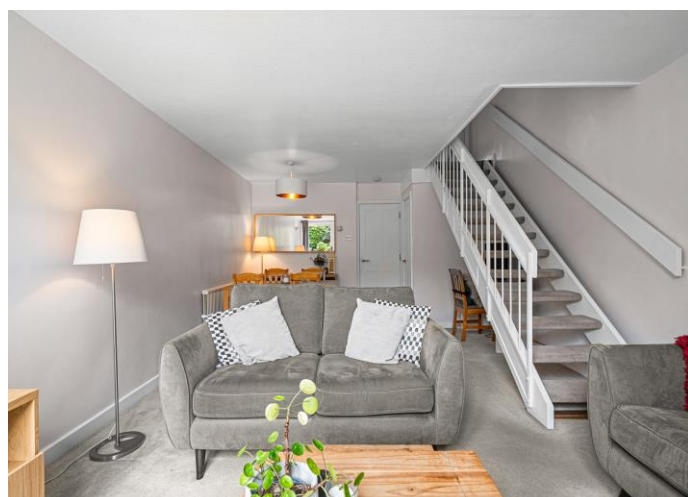
For Identification Only - Not to scale



Floor plan Produced in accordance with RICS Property Measurement 2nd Edition,
Incorporating International Property Measurement Standards (IPMS2 Residential).
Produced for James Neave Estate Agents.



A well-presented two-bedroom duplex apartment, located in a sought-after area of Walton-on-Thames. Set across the ground and first floor, the apartment offers spacious accommodation, including two generously sized double bedrooms. It benefits from double glazing and gas central heating and plenty of storage. Further benefits include a residents' parking permit. The location is superb, providing easy access to Walton-on-Thames town centre, local shops, and Walton mainline train station. Available unfurnished, from the 27th June 2026.



AGENTS NOTES: These details do not constitute any part of an offer or contract. In issuing them we do not have any authority to give any warranty or representation whatsoever in respect of this property. These details are provided without any responsibility on our part or the part of the vendors. No statements in these details are to be relied upon as representations of fact and purchasers should satisfy themselves by inspection or otherwise as to the accuracy of the statements contained therein.

Equipment: We have not tested the equipment or central heating system mentioned in these particulars and purchasers are advised to satisfy themselves as to their working order and condition.

Measurements: Great care is taken when measuring but measurements should not be relied upon for ordering carpets, equipment, etc.