

THE HOME AGENCY

'Passion for property.'



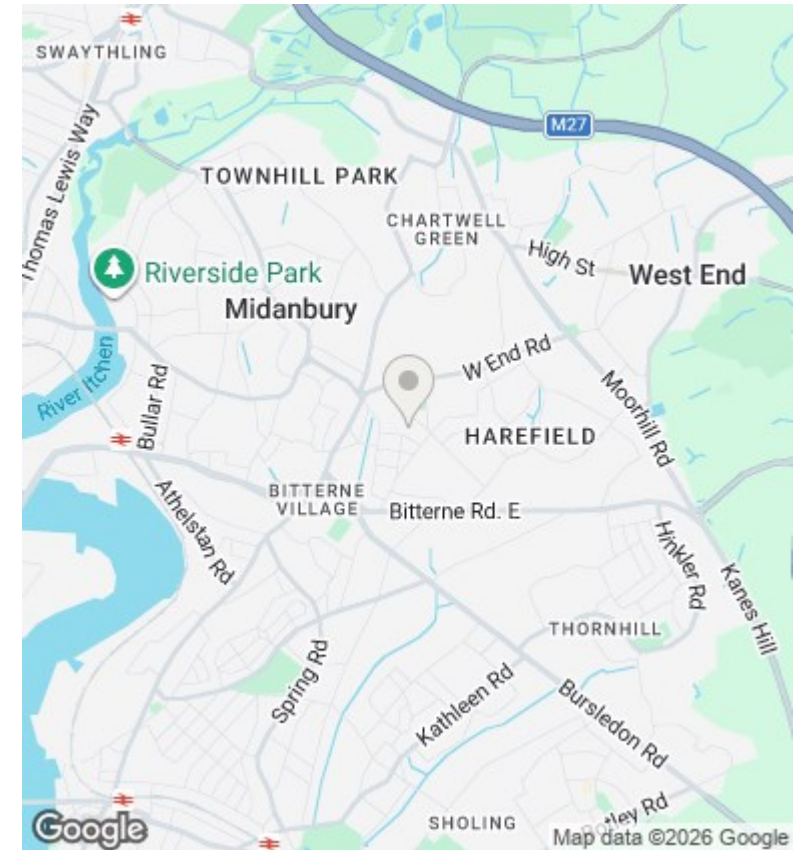
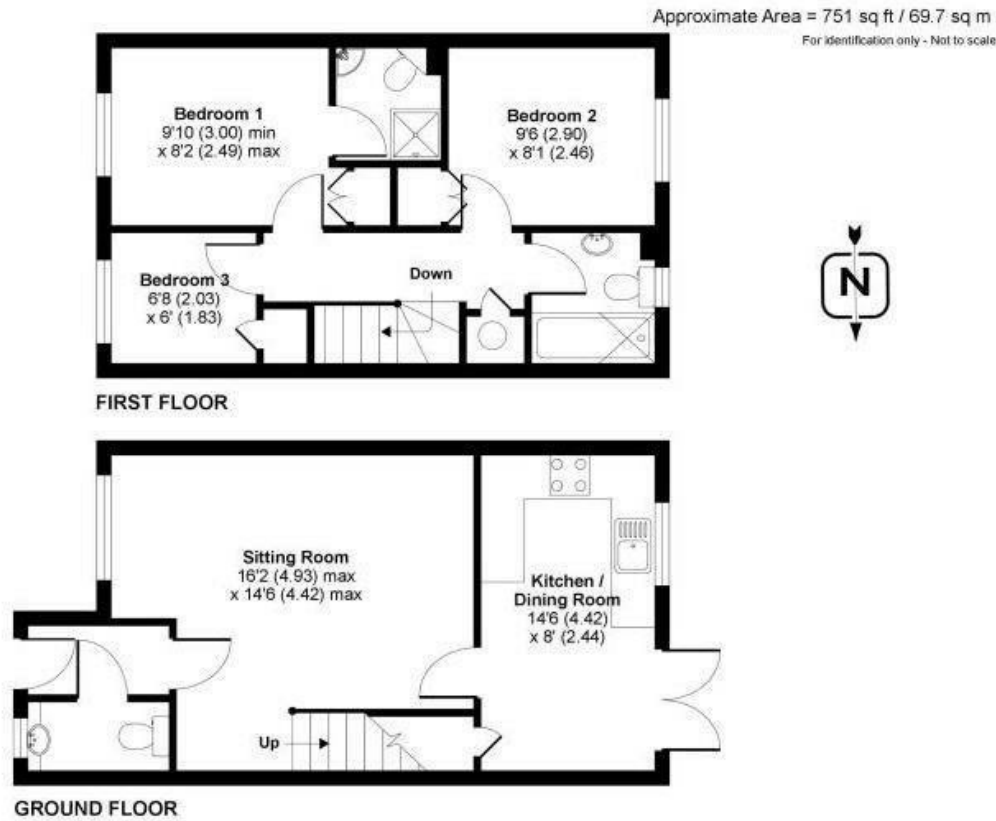
2a Hatley Road, Harefield, Southampton, SO18 6NU

£1,450 PCM

- End Terraced House
- Large Lounge
- Two Off Road Parking Spaces
- Viewing recommended
- Double Glazing
- Gas Central Heating
- Garden
- Modern Kitchen Diner
- Ensuite to Master Bedroom
- Parking

11 London Road, Southampton, Hampshire, SO15 2AE
02380 632632

enquiries@thehomeagency.net
<https://thehomeagency.net>



Directions

Viewings

Viewings by arrangement only. Call 02380 632632 to make an appointment.

Council Tax Band

B

EPC Rating:

C

Energy Efficiency Rating		Current	Potential
Very energy efficient - lower running costs			
(92 plus)	A		
(81-91)	B		85
(69-80)	C	71	
(55-68)	D		
(39-54)	E		
(21-38)	F		
(1-20)	G		
Not energy efficient - higher running costs			
England & Wales		EU Directive 2002/91/EC	